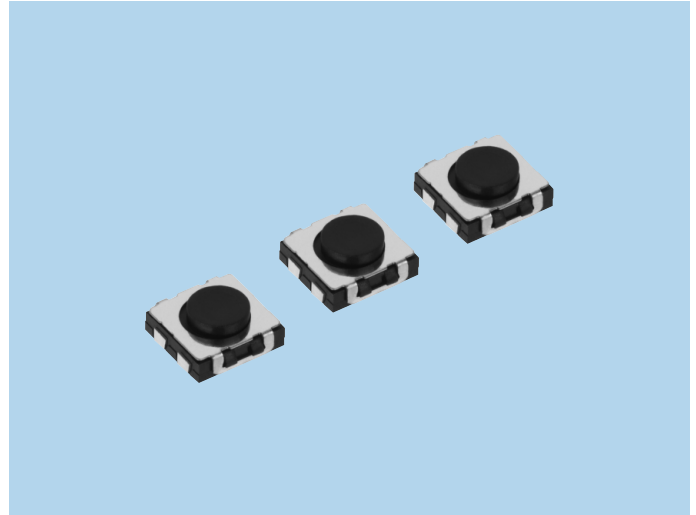


Long-Life Tactile Switches SOV Series

FEATURES

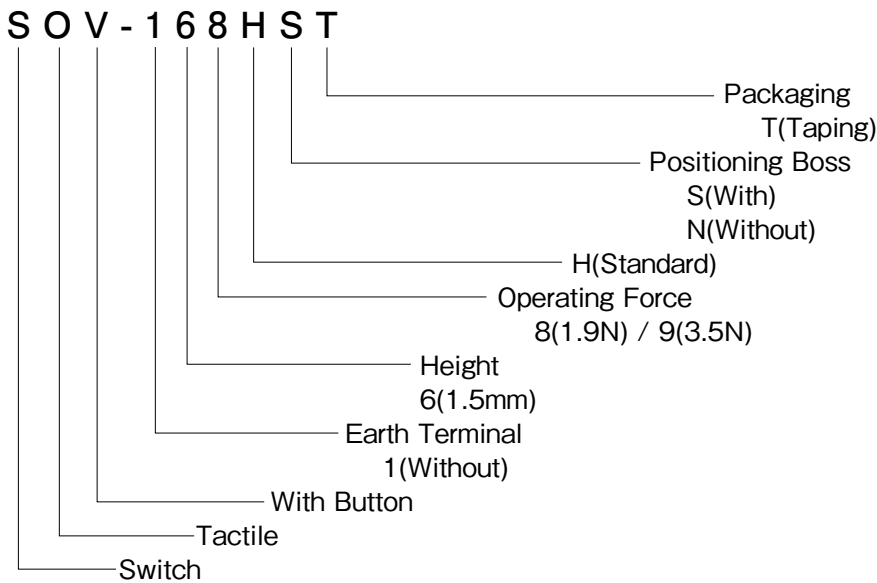
1. Long-Life : 1,000,000 times.
2. Stable pushing thanks to the specification of attaching a button.



APPLICATIONS

Mobile Phones, Smartphones, Digital Cameras, Game Machines and etc.

MODEL NAME CODE



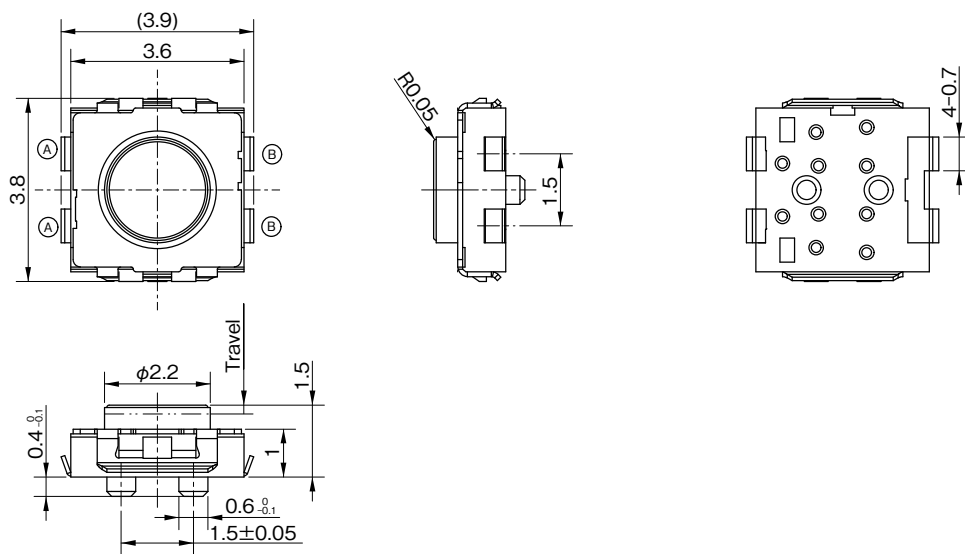
SPECIFICATIONS

Electrical Characteristics	Rating (Resistive load)	DC12V, 50mA
	Contact Resistance	1Ω or less
	Insulation Resistance	10MΩ or more
	Withstand Voltage	1 minute at AC 100V
Life	SOV-168HST, SOV-168HNT	1,000,000 times
	SOV-169HST, SOV-169HNT	500,000 times

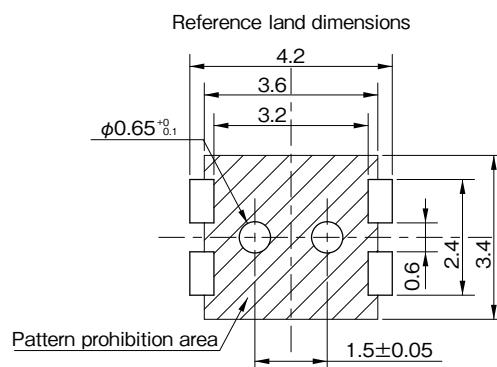
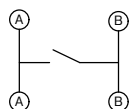
TYPE

Model Name Code	Order Number	Operating Force	Boss	Pcs/Reel
SOV-168HST	R 667842	1.9N	With	5,000
SOV-168HNT	R 667843	1.9N	Without	5,000
SOV-169HST	R 667844	3.5N	With	5,000
SOV-169HNT	R 667845	3.5N	Without	5,000

DIMENSIONS



Circuit diagram



Unit: mm