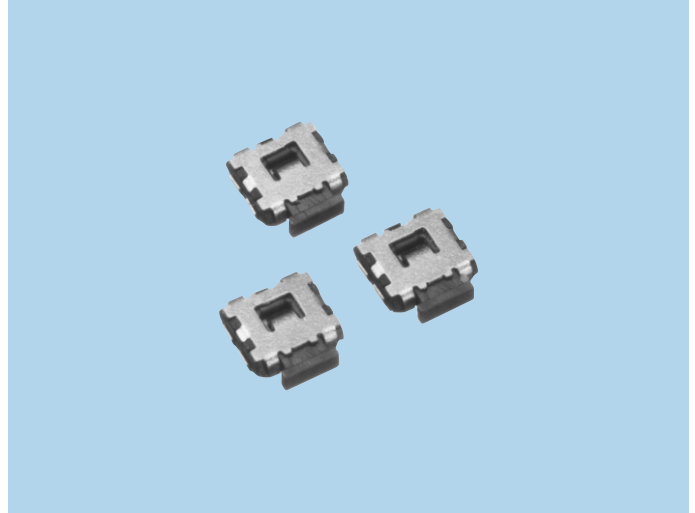


Side Click Type Tactile Switches SOU Series

FEATURES

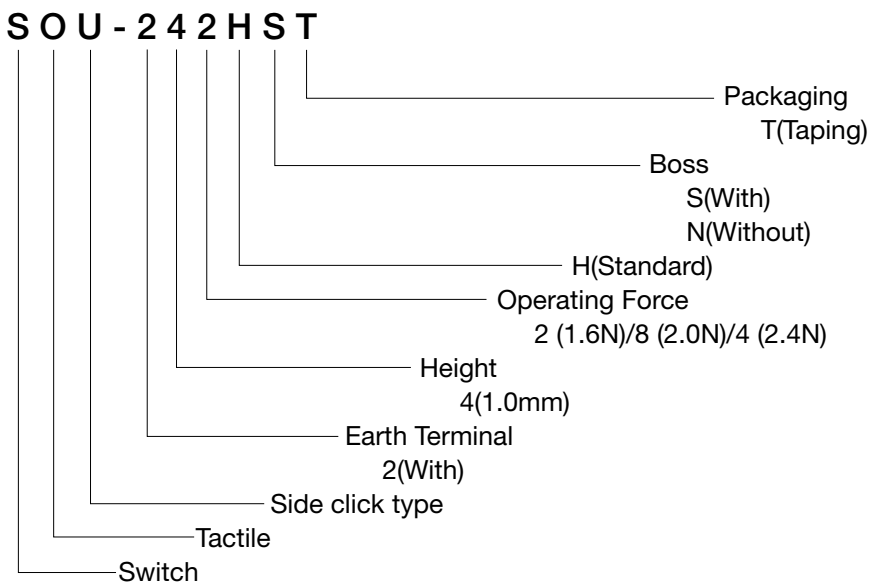
1. Minimized mounting area.
2. Using the stainless steel metal dome with long life and sharp feeling.
3. Suitable for controllers with side click in small equipment.
4. Suitable for SMT reflow soldering.
5. Our original grounding structure can prevent flux from entering into a switch.



APPLICATIONS

For mobile phones and small digital devices.

MODEL NAME CODE



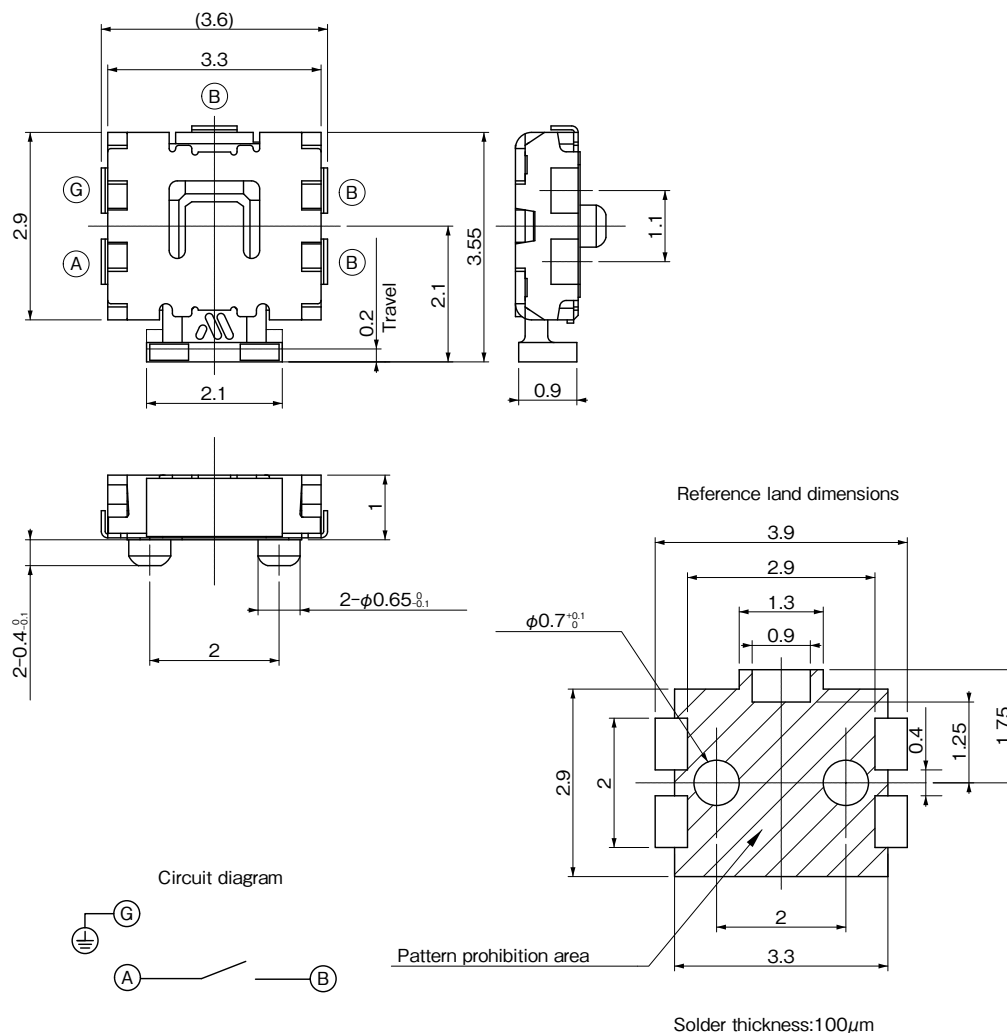
SPECIFICATIONS

Electrical Characteristics	Rating (Resistive load)	50mA, 12V DC
	Contact Resistance	1Ω or less
	Insulation Resistance	10MΩ or more
	Withstand Voltage	1 minute at AC 100V
Life	SOU-242HST, SOU-242HNT	100,000 times
	SOU-244HNT, SOU-244HST	100,000 times
	SOU-248HNT, SOU-248HST	100,000 times

TYPE

Model Name Code	Order Number	Operating Force	Boss	Pcs/Reel
SOU-242HST	R 666939	1.6N	With	5,000
SOU-242HNT	R 666994	1.6N	Without	5,000
SOU-248HST	R 667270	2.0N	With	5,000
SOU-248HNT	R 667271	2.0N	Without	5,000
SOU-244HST	R 667799	2.4N	With	5,000
SOU-244HNT	R 667823	2.4N	Without	5,000

DIMENSIONS



Unit: mm