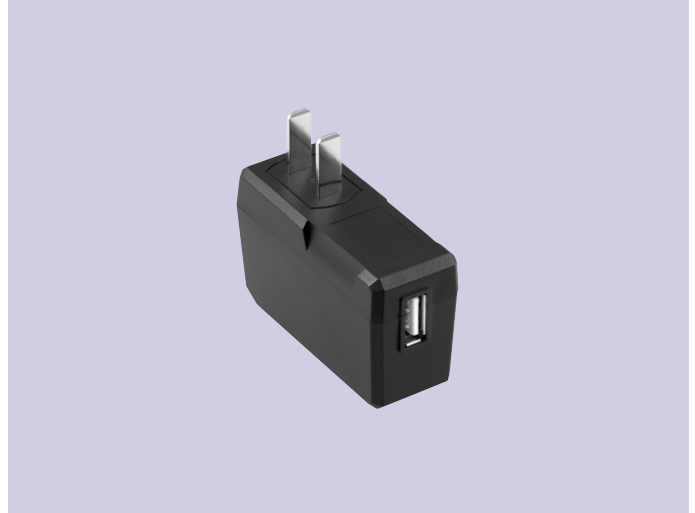


4W USB Output AC Adaptor ADP-USB-W1 Series

Adaptors, Chargers/Switching Power Supplies

OUTLINE

AC adaptor for electronic equipment and various mobile equipment.



FEATURES

1. USB output (USB-A type connector).
2. Standard Mitsumi case.
3. Output Specifications can be customized.

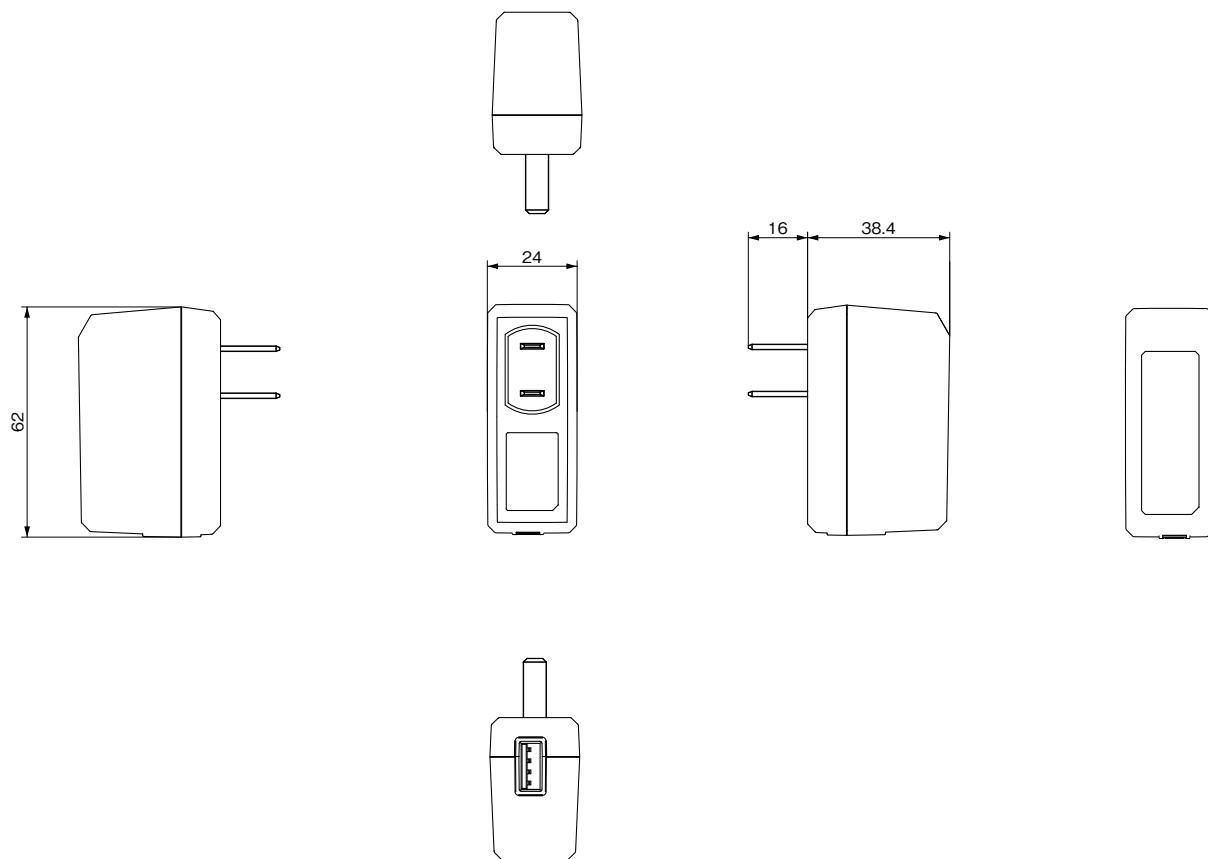
USES

1. Mobile Phones.
2. Electric Equipment.

SPECIFICATIONS

Item	Specifications
Input voltage	AC100~240V
Output voltage	DC 5.0±0.25V
Output current	DC 500~850mA
Destinations	Japan, North America, China
External dimensions	24(W)×62(D)×38.4(H) mm (except for plug)

DIMENSIONS



Unit : mm