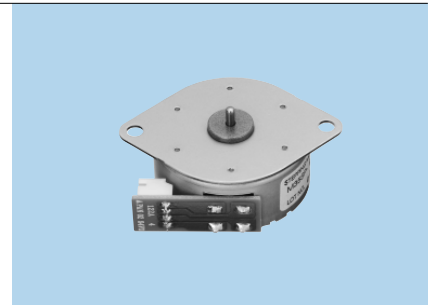


Stepping Motors

M35SP-9, -10N

FEATURES

1. Compact size and high-output torque.
2. Superior running quietness and stability.



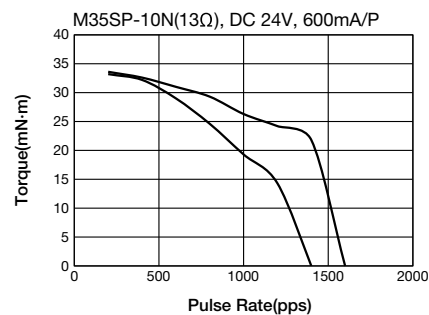
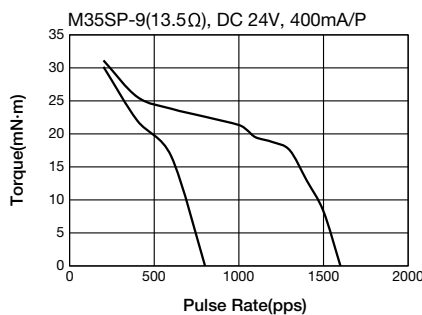
USES

Printers, multifunction machines, copy machines, FAX, etc.

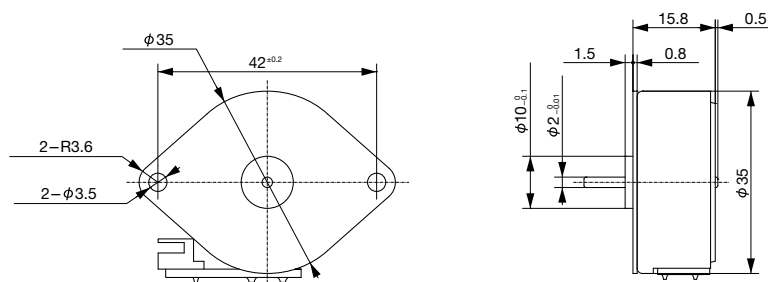
SPECIFICATIONS

Item	M35SP-9	M35SP-10N
Rated Voltage	DC 24V	
Working Voltage	DC 21.6~26.4V	
Rated Current/Phase	400mA(Peak)	600mA(Peak)
Coil DC Resistance	13.5Ω/phase±10%	13Ω/phase±10%
Step Angle	7.5°/step	3.75°/step
Drive Method	Constant Current	
Excitation Method	2-2 Phase excitation(Unipolar driving)	
Insulation Class	Class E insulation	
Holding Torque	33mN·m	35mN·m
Pull-out Torque	21.3mN·m/1,000pps	26.3mN·m/1,000pps
Pull-in Torque	26.1mN·m/300pps	29mN·m/600pps
Max. Pull-out Pulse Rate	1,790pps	1,600pps
Max. Pull-in Pulse Rate	630pps	1,200pps

CHARACTERISTICS



DIMENSIONS



Unit : mm
General tolerance : ±0.5

• Any products mentioned in this catalog are subject to any modification in their appearance and others for improvements without prior notification.
• The details listed here are not a guarantee of the individual products at the time of ordering. When using the products, you will be asked to check their specifications.