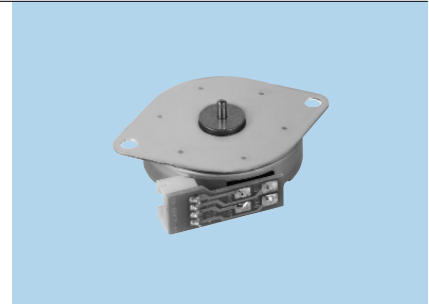


# M35SP-14NK

## FEATURES

1. Thin and high output.
2. Superior running quietness and stability.



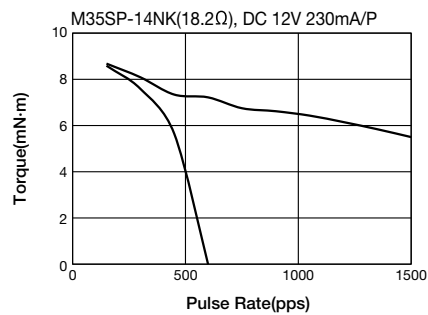
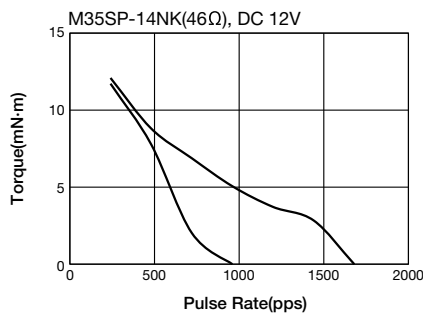
## USES

Automotive actuator, pachinko machine.

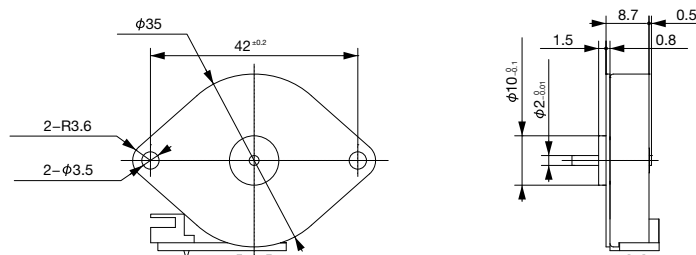
## SPECIFICATIONS

Item	M35SP-14NK	
Rated Voltage	DC 12V	DC 12V
Working Voltage	DC 10~14V	DC 10~14V
Rated Current/Phase	280mA	230mA(PEAK)
Coil DC Resistance	46Ω/phase±7%	18.2Ω/phase±10%
Step Angle	7.5°/step	
Drive Method	Constant Voltage	Constant Current
Excitation Method	2-2 Phase excitation (Bipolar driving)	
Insulation Class	Class E insulation	
Holding Torque	12.2mN·m	12.7mN·m
Pull-out Torque	8.8mN·m/480pps	8.1mN·m/300pps
Pull-in Torque	7.8mN·m/480pps	7.6mN·m/300pps
Max. Pull-out Pulse Rate	1,800pps	3,200pps
Max. Pull-in Pulse Rate	870pps	790pps

## CHARACTERISTICS



## DIMENSIONS



Unit : mm  
General tolerance : ±0.5

• Any products mentioned in this catalog are subject to any modification in their appearance and others for improvements without prior notification.  
• The details listed here are not a guarantee of the individual products at the time of ordering. When using the products, you will be asked to check their specifications.