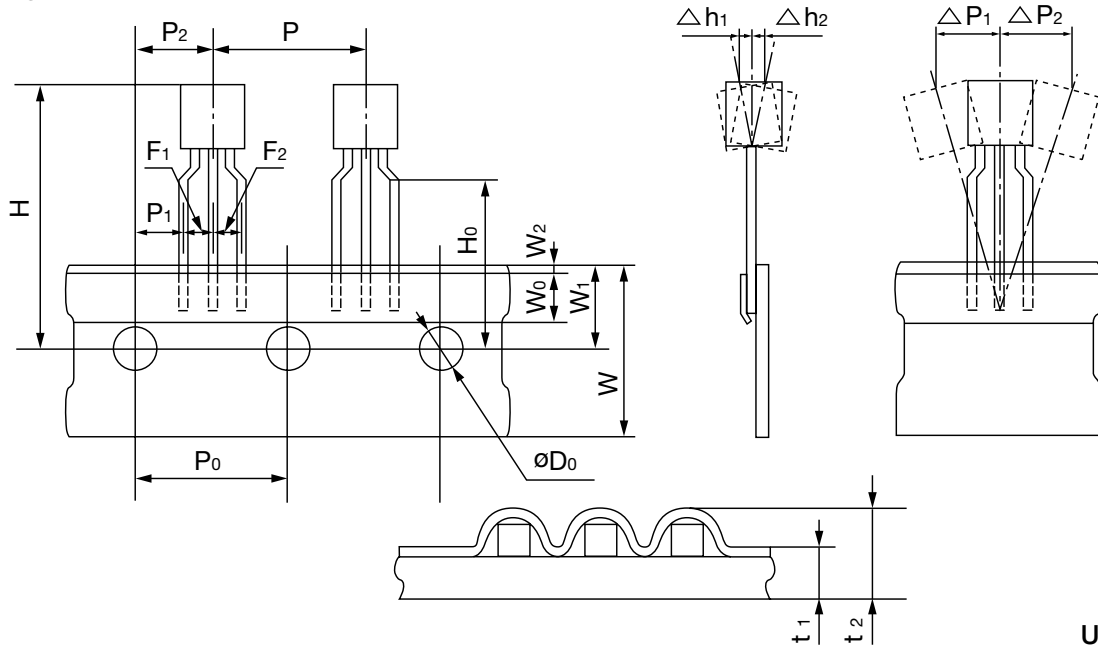


Packing

TO-92 Radial Taping

1. Taping dimensions



Units : mm

Symbol	P	P ₀ *1	P ₁ *2	P ₂	F ₁ *2 F ₂	W	W ₀	W ₁
Dimensions	12.7 ±1.0	12.7 ±0.3	3.85 ±0.7	6.35 ±1.3	2.5 +0.4 -0.1	18.0 +1.0 -0.5	6.0 ±0.1	9.0 ±0.2

Symbol	W ₂	H ₀ *4	øD ₀	t ₁	t ₂	Δh ₁ Δh ₂	ΔP ₁ *3 ΔP ₂ *5	H
Dimensions	0.6 or less	16.0 ±0.3	4.0 ±0.2	0.6 ±0.3	1.5 or less	2.0 or less	1.3 or less	24.1 or less

Notes : *1: Cumulative pitch tolerance is ±1.0 mm per 20 pitch units.

*2: Measurements are to be performed at the top end of the taping, and are to measure the interval with the center line of the lead.

*3: Measurements are to be performed at the part tip.

*4: Measurements are to be performed below the clinch.

*5: The P₀ center line is to be used as reference.

2. Number of devices per packing unit

The number of devices per packing unit is 2000 per box; devices are packed in zigzag fashion as illustrated on the right.

