

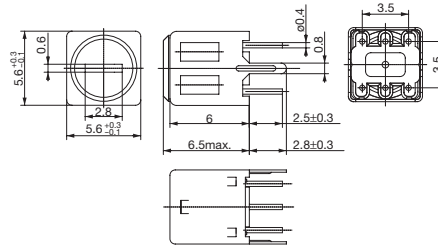
# Adjustable Coils PIN Type K, M Series

## K5-C

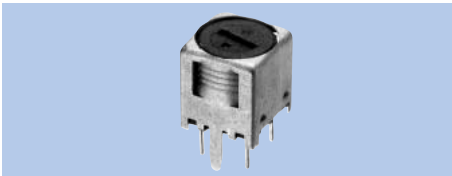


**Specifications**

- (1) 1~1,000 $\mu$ H
- (2) 0.1~20MHz
- (3) F: $\pm$ 2%  
L: $\pm$ 5%
- (4) 10~10,000pF
- (5) 50~100

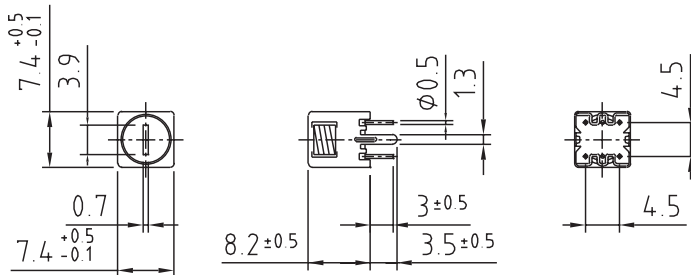


## K7-D

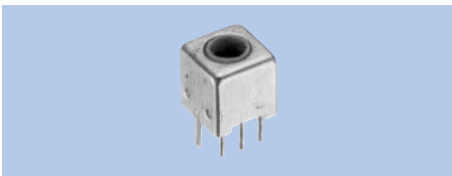


**Specifications**

- (1) 5~100mH
- (2) 10~300kHz
- (3) F: $\pm$ 2%  
L: $\pm$ 5%
- (4) -
- (5) 50~80

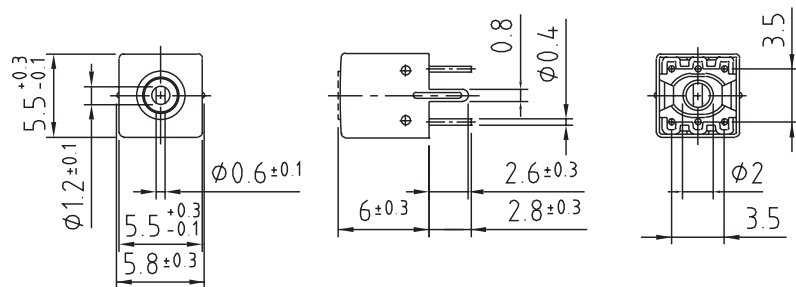


## M5-H1



**Specifications**

- (1) 0.03~130 $\mu$ H
- (2) 10~200MHz
- (3) F: $\pm$ 2%  
L: $\pm$ 4%
- (4) -
- (5) 30~80



- (1) Inductance
- (2) Operational frequency
- (3) Variable range of F & L
- (4) Internal capacitance
- (5) Unloaded Q