

Power Inductors

CP Series

OUTLINE

Compacts, low-height, and high current power inductor used in digital devices and mobile phones. Several dimensions are available.



FEATURES

1. Low DCR by magnetically shielded structure with magnetic resin.
2. Impact-resistant structure with wider terminals.
3. Non-Solder products by laser welding.

APPLICATIONS

For DC-DC converter power supply of miniature portable devices (mobile phones, portable game equipment, DSC, DVC, PDA, etc.).

SPECIFICATIONS

Type	Size (mm)	H length (Unit : mm)	Inductance (μH)	Rated DC Current (A)	DC Resistance (mΩ)	Pcs/Reel
C3-P1.0R	3.0×3.0	1.0max.	1.2~10	0.57~1.50	120~630	5,000
C3-P1.2R	3.0×3.0	1.2max.	1.2~47	0.26~1.50	55~1,300	5,000
C3-P1.2RA	3.0×3.0	1.2max.	1.0~18	0.52~2.00	65~750	5,000
C3-P1.5R	3.0×3.0	1.5max.	1.5~47	0.33~2.40	58~1,050	4,000
C4-P1.5R	4.0×4.0	1.5max.	1.0~47	0.35~2.85	45~850	4,000
C4-P1.8R	4.0×4.0	1.8max.	1.2~68	0.37~2.70	40~920	3,000

• Any products mentioned in this catalog are subject to any modification in their appearance and others for improvements without prior notification.
 • The details listed here are not a guarantee of the individual products at the time of ordering. When using the products, you will be asked to check their specifications.

DATA LIST (C3-P Series)

C3-P1.0R (Height : 1.0mm max.)

Item	Stamp	Inductance			DCR (mΩ) typ.	Rated DC Current (A) typ.	
		(μH)	Tolerance (%)	Test Freq. (kHz)		L=-30%	ΔT=40K
DB	1R2	1.2	±30	1kHz	120	1.50	1.25
DE	2R0	2.0	±20	1kHz	160	1.20	1.10
DG	3R0	3.0	±20	1kHz	240	0.95	0.88
DJ	4R7	4.7	±20	1kHz	300	0.82	0.83
DK	5R6	5.6	±20	1kHz	350	0.75	0.70
DL	6R2	6.2	±20	1kHz	380	0.70	0.67
DM	8R2	8.2	±20	1kHz	550	0.60	0.57
EA	100	10	±20	1kHz	630	0.57	0.55

C3-P1.2R (Height : 1.2mm max.)

Item	Stamp	Inductance			DCR (mΩ) typ.	Rated DC Current (A) typ.	
		(μH)	Tolerance (%)	Test Freq. (kHz)		L=-30%	ΔT=25K
DB	1R2	1.2	±30	1kHz	55	1.50	1.60
DC	1R5	1.5	±30	1kHz	66	1.40	1.50
DD	1R8	1.8	±30	1kHz	76	1.30	1.40
DF	2R7	2.7	±30	1kHz	83	1.25	1.30
DG	3R3	3.3	±30	1kHz	105	1.00	1.10
DH	3R9	3.9	±30	1kHz	135	0.90	1.00
DJ	4R7	4.7	±30	1kHz	155	0.85	0.90
DK	5R6	5.6	±30	1kHz	170	0.80	0.85
DL	6R8	6.8	±30	1kHz	210	0.70	0.80
DM	8R2	8.2	±30	1kHz	245	0.60	0.75
EA	100	10	±20	1kHz	280	0.55	0.70
EB	120	12	±20	1kHz	400	0.50	0.60
EC	150	15	±20	1kHz	460	0.45	0.55
ED	180	18	±20	1kHz	620	0.42	0.50
EE	220	22	±20	1kHz	670	0.38	0.45
EF	270	27	±20	1kHz	750	0.35	0.40
EG	330	33	±20	1kHz	1050	0.31	0.35
EH	390	39	±20	1kHz	1200	0.28	0.32
EJ	470	47	±20	1kHz	1300	0.26	0.30

• Any products mentioned in this catalog are subject to any modification in their appearance and others for improvements without prior notification.
 • The details listed here are not a guarantee of the individual products at the time of ordering. When using the products, you will be asked to check their specifications.

DATA LIST (C3-P Series)

C3-P1.2RA (Height : 1.2mm max.)

Item	Stamp	Inductance			DCR (mΩ) typ.	Rated DC Current (A) typ.	
		(μH)	Tolerance (%)	Test Freq. (kHz)		L=-30%	ΔT=40K
DA	1R0	1.0	±30	1kHz	65	2.00	1.80
DC	1R5	1.5	±30	1kHz	85	1.70	1.70
DE	2R2	2.2	±30	1kHz	90	1.40	1.50
DF	2R7	2.7	±30	1kHz	125	1.35	1.35
DG	3R3	3.3	±30	1kHz	140	1.15	1.20
DH	3R9	3.9	±30	1kHz	165	1.10	1.15
DJ	4R7	4.7	±30	1kHz	180	1.00	1.10
DK	5R6	5.6	±30	1kHz	240	0.92	1.00
DL	6R8	6.8	±30	1kHz	250	0.85	0.95
EA	100	10	±20	1kHz	390	0.64	0.75
EB	120	12	±20	1kHz	470	0.60	0.65
EC	150	15	±20	1kHz	660	0.55	0.60
ED	180	18	±20	1kHz	750	0.52	0.54
EE	220	22	±20	1kHz	840	0.48	0.50

C3-P1.5R (Height : 1.5mm max.)

Item	Stamp	Inductance			DCR (mΩ) typ.	Rated DC Current (A) typ.	
		(μH)	Tolerance (%)	Test Freq. (kHz)		L=-30%	ΔT=40K
DC	1R5	1.5	±30	1kHz	58	2.40	2.00
DD	1R8	1.8	±30	1kHz	65	2.20	1.90
DF	2R7	2.7	±30	1kHz	85	1.85	1.65
DG	3R3	3.3	±30	1kHz	115	1.65	1.50
DH	3R9	3.9	±30	1kHz	125	1.50	1.40
DJ	4R7	4.7	±30	1kHz	140	1.35	1.30
DK	5R6	5.6	±30	1kHz	150	1.20	1.20
DL	6R8	6.8	±30	1kHz	200	1.15	1.10
DM	8R2	8.2	±30	1kHz	210	0.85	1.00
EA	100	10	±20	1kHz	240	0.70	0.90
EB	120	12	±20	1kHz	280	0.63	0.85
EC	150	15	±20	1kHz	365	0.58	0.75
ED	180	18	±20	1kHz	410	0.55	0.70
EE	220	22	±20	1kHz	555	0.47	0.60
EF	270	27	±20	1kHz	620	0.45	0.55
EG	330	33	±20	1kHz	830	0.40	0.52
EH	390	39	±20	1kHz	940	0.35	0.48
EJ	470	47	±20	1kHz	1050	0.33	0.45

• Any products mentioned in this catalog are subject to any modification in their appearance and others for improvements without prior notification.
 • The details listed here are not a guarantee of the individual products at the time of ordering. When using the products, you will be asked to check their specifications.

DATA LIST (C4-P Series)

C4-P1.5R (Height : 1.5mm max.)

Item	Stamp	Inductance			DCR (mΩ) typ.	Rated DC Current (A) typ.	
		(μH)	Tolerance (%)	Test Freq. (kHz)		L=-30%	ΔT=40K
DA	1R0	1.0	±30	1kHz	45	2.85	2.85
DB	1R2	1.2	±30	1kHz	55	2.50	2.55
DD	1R8	1.8	±30	1kHz	65	2.20	2.40
DE	2R2	2.2	±30	1kHz	70	1.85	2.00
DG	3R3	3.3	±30	1kHz	80	1.75	1.95
DH	3R9	3.9	±30	1kHz	90	1.60	1.90
DJ	4R7	4.7	±30	1kHz	100	1.35	1.75
DK	5R6	5.6	±30	1kHz	130	1.20	1.60
DL	6R8	6.8	±30	1kHz	155	1.10	1.45
DM	8R2	8.2	±30	1kHz	170	1.00	1.40
EA	100	10	±20	1kHz	185	0.95	1.30
EB	120	12	±20	1kHz	265	0.80	1.10
EC	150	15	±20	1kHz	300	0.78	1.00
ED	180	18	±20	1kHz	330	0.50	0.95
EE	220	22	±20	1kHz	355	0.48	0.90
EF	270	27	±20	1kHz	465	0.45	0.75
EG	330	33	±20	1kHz	550	0.40	0.72
EH	390	39	±20	1kHz	710	0.38	0.65

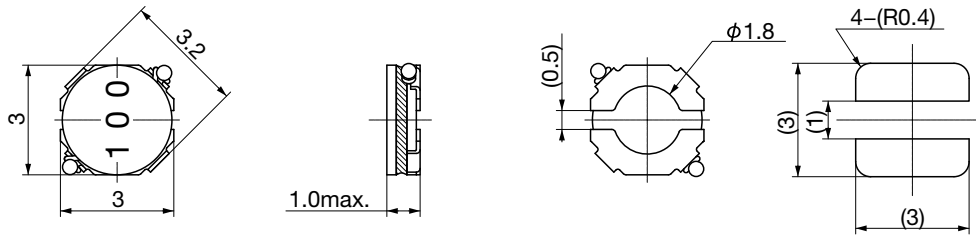
C4-P1.8R (Height : 1.8mm max.)

Item	Stamp	Inductance			DCR (mΩ) typ.	Rated DC Current (A) typ.	
		(μH)	Tolerance (%)	Test Freq. (kHz)		L=-30%	ΔT=40K
DB	1R2	1.2	±30	1kHz	40	2.70	2.65
DC	1R5	1.5	±30	1kHz	45	2.20	2.60
DD	1R8	1.8	±30	1kHz	50	2.00	2.35
DF	2R7	2.7	±30	1kHz	55	1.70	2.30
DG	3R3	3.3	±30	1kHz	65	1.60	2.20
DH	3R9	3.9	±30	1kHz	70	1.50	2.00
DJ	4R7	4.7	±30	1kHz	80	1.40	1.95
DK	5R6	5.6	±30	1kHz	85	1.25	1.80
DL	6R8	6.8	±30	1kHz	125	1.20	1.70
DM	8R2	8.2	±30	1kHz	135	1.10	1.55
EA	100	10	±20	1kHz	155	0.95	1.40
EB	120	12	±20	1kHz	185	0.90	1.25
EC	150	15	±20	1kHz	250	0.80	1.10
ED	180	18	±20	1kHz	300	0.70	1.00
EE	220	22	±20	1kHz	360	0.65	0.90
EF	270	27	±20	1kHz	395	0.60	0.85
EG	330	33	±20	1kHz	485	0.50	0.83
EH	390	39	±20	1kHz	540	0.45	0.80
EJ	470	47	±20	1kHz	630	0.43	0.70
EK	560	56	±20	1kHz	780	0.40	0.60
EL	680	68	±20	1kHz	920	0.37	0.55

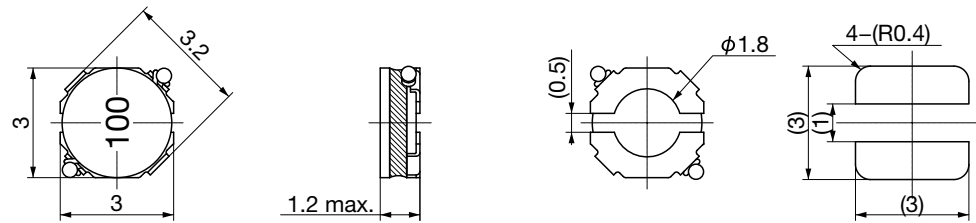
• Any products mentioned in this catalog are subject to any modification in their appearance and others for improvements without prior notification.
 • The details listed here are not a guarantee of the individual products at the time of ordering. When using the products, you will be asked to check their specifications.

DIMENSIONS

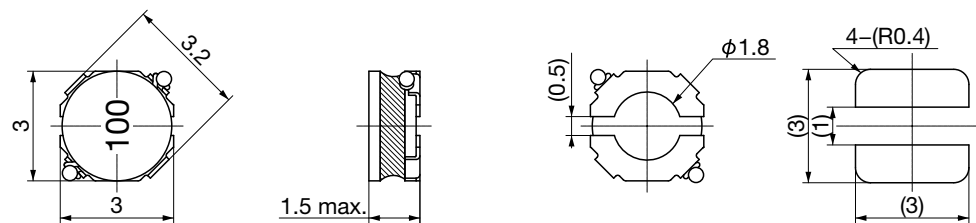
C3-P1.0R



C3-P1.2R



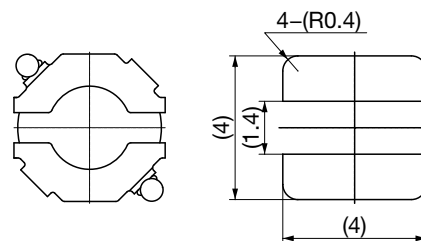
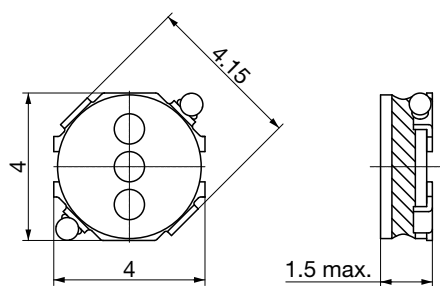
C3-P1.5R



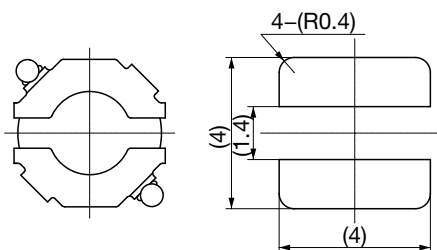
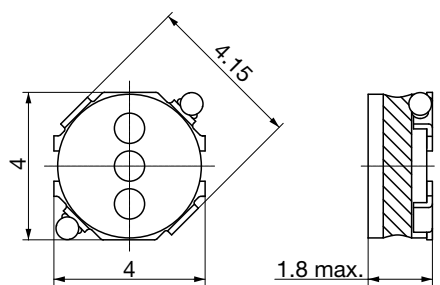
Recommended land patterns

Unit : mm
Tolerance : ±0.2

C4-P1.5R



C4-P1.8R



Recommended land patterns

Unit : mm
Tolerance : ± 0.2