

# M25SP-5N

## FEATURES

1. Compact size and high-output torque.
2. Superior running quietness and stability.



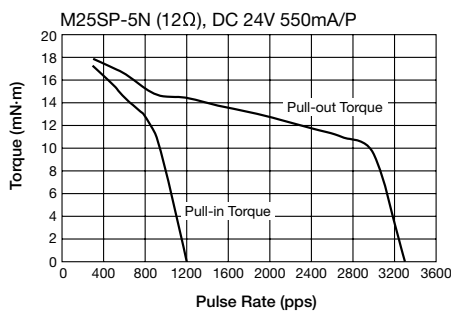
## USES

Printers, multifunction machines, copy machines, FAX, etc.

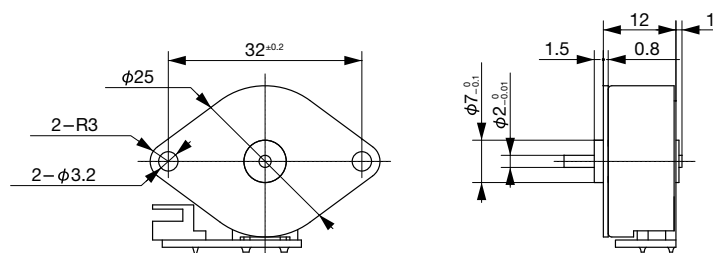
## SPECIFICATIONS

Item	M25SP-5N
Rated Voltage	DC 24V
Working Voltage	DC 21.6~26.4V
Rated Current/Phase	550mA(Peak)
Coil DC Resistance	12Ω/phase±10%
Step Angle	7.5°/step
Drive Method	Constant Current
Excitation Method	2-2 Phase excitation (Bipolar driving)
Insulation Class	Class E insulation
Holding Torque	18.9mN·m
Pull-out Torque	17.4mN·m/400pps
Pull-in Torque	16.3mN·m/400pps
Max. Pull-out Pulse Rate	3,700pps
Max. Pull-in Pulse Rate	1,170pps

## CHARACTERISTICS



## DIMENSIONS



Unit : mm  
General tolerance : ±0.5