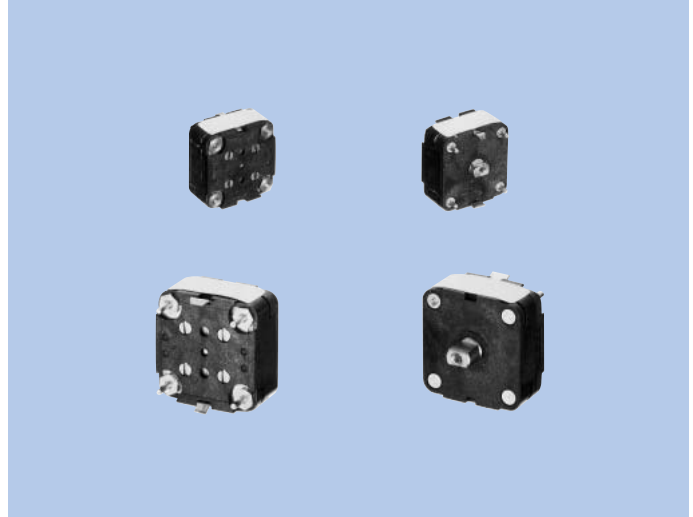


# Compact Trackingless Type, For AM/FM 2-Band, AM Narrow-Band 16<sup>□</sup> mm, PVC-2LXT16L7, -2LXT16B7

Polyvaricon

## FEATURES

These are standard POLYVARICONS of 16<sup>□</sup>mm size intended for AM/FM 2-band radios.



## SPECIFICATIONS

| Models   | Uses           | Mounting Form  | Dimensions (mm) | Shaft Dimensions (mm) | No. of Stage | max. Capacitance Swing (pF) | min. Capacitance (pF)      | Variable Coefficient Curve |
|----------|----------------|----------------|-----------------|-----------------------|--------------|-----------------------------|----------------------------|----------------------------|
| 2LXT16L7 | AM/FM (2-band) | Front mounting | 16×16×8         | 4-2                   | AM-2         | (O) 82<br>(A) 140           | (O) 4.3±1<br>(A) 4.1±1     | C<br>A                     |
|          |                |                |                 |                       | FM-2         | 20 (40)                     | (FC1) 2.8±1<br>(FC2) 3.9±1 | B                          |
| 2LXT16B7 | AM/FM (2-band) | Rear mounting  | 16×16×8         | 4-2                   | AM-2         | (O) 82<br>(A) 140           | (O) 4.0±1<br>(A) 3.8±1     | C<br>A                     |
|          |                |                |                 |                       | FM-2         | 20 (40)                     | (FC1) 2.8±1<br>(FC2) 3.6±1 | B                          |

## CHARACTERISTICS

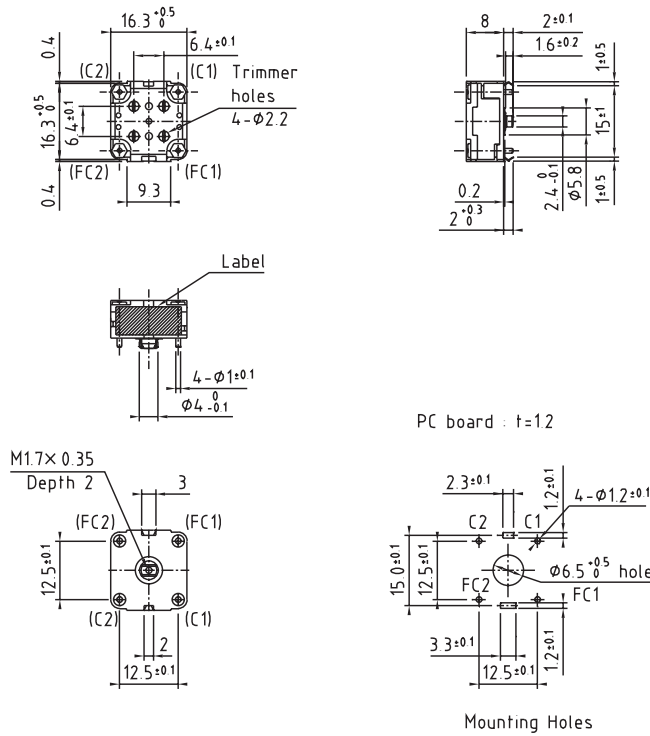
| Item                       |                                   | Models | PVC-2LXT16L7/2LXT16B7   |
|----------------------------|-----------------------------------|--------|---|
| Mechanical Characteristics | Shaft Rotational Direction        |        | Capacitance decreases as shaft turned clockwise.                    |
|                            | Full Rotational Angle             |        | 97 <sup>+2</sup> <sub>-1</sub> % ( With semi-sphere 180° as 100%. ) |
|                            | Rotational Torque                 |        | 30~200g·cm  |
|                            | Torque Difference                 |        | 100g·cm or less   |
|                            | Stopper Strength                  |        | 4kg·cm (Breakdown strength)   |
| Trimmer Rotational Torque  |                                   |        | 10~100g·cm  |
| Electrical Characteristics | Tolerance of Variable Capacitance | AM     | ± (1pF+2%)  |
|                            |                                   | FM     | ± (0.3pF+2%)  |
|                            | Q                                 | AM     | 500 or more   |
|                            |                                   | FM     | 200 or more   |
| Trimmer Capacitance        |                                   |        | 5pF or more   |
| MW Tuning Frequency Range  |                                   |        | 520~1650kHz   |

## Nominal Variable Coefficient Capacitance

| Rotational Index          | %  | 100   | 90    | 82.5  | 75    | 70    | 60    | 50   | 42.6 | 30   | 25   | 17.5 | 10   | (3) | Variable Coefficient Curve |
|---------------------------|----|-------|-------|-------|-------|-------|-------|------|------|------|------|------|------|-----|----------------------------|
| Variable Capacitance (pF) | AM | 82.0  | 73.8  | 66.8  | 58.9  | 53.5  | 42.4  | 31.8 | 24.5 | 14.3 | 10.9 | 6.44 | 2.71 | 0   | C                          |
|                           | FM | 140.0 | 118.2 | 101.3 | 84.0  | 73.2  | 53.2  | 36.7 | 26.6 | 14.3 | 10.6 | 6.01 | 2.44 | 0   | A                          |
|                           | FM | 20.00 | 17.24 | —     | 13.46 | 12.30 | 10.08 | 8.02 | —    | 4.30 | 3.45 | —    | 1.05 | 0   | B                          |

## DIMENSIONS

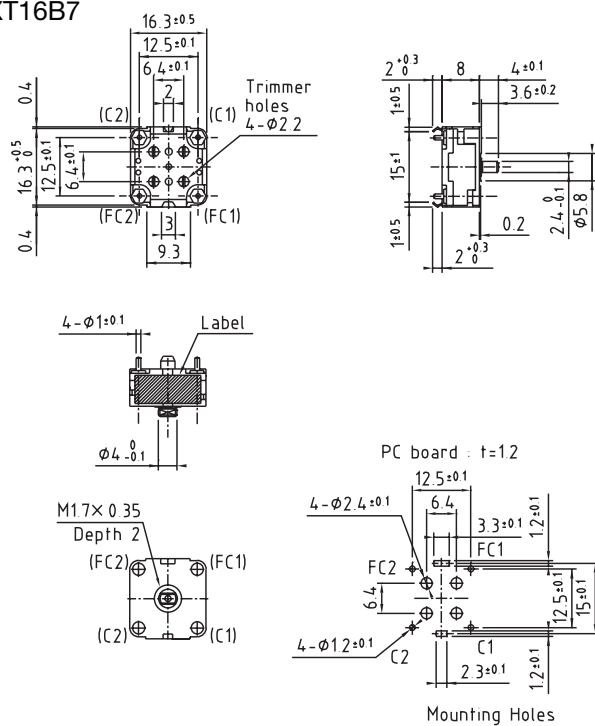
### PVC-2LXT16L7



- ☆Flats of shaft located as shown max. capacitance.
- ☆Tolerance of shaft flat angle : Within  $\pm 2^\circ$ .
- ☆Oscillator stage : AM (C1), FM (FC1).

Unit : mm, Tolerance :  $\pm 0.2$

### PVC-2LXT16B7



- ☆Flats of shaft located as shown max. capacitance.
- ☆Tolerance of shaft flat angle : Within  $\pm 2^\circ$ .
- ☆Oscillator stage : AM (C2), FM (FC2).

Unit : mm, Tolerance :  $\pm 0.2$