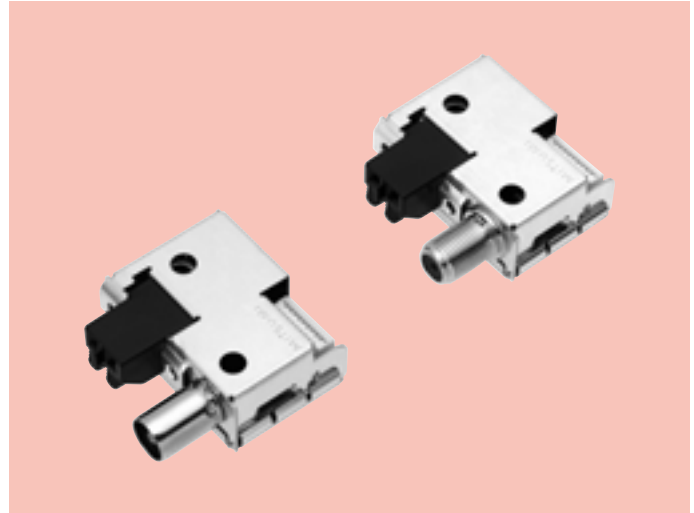


# Compact, AM/FM Electronic Tuner for Popular Class Home Stereo FAEH08-W01/E01

AM/FM Electronic Tuners

## FEATURES

1. Can support worldwide broadcast by switching function of software.
2. Conform to EN, FCC, PSE Law.
3. Contribution to Layoutfree thanks to miniaturization reduction in bulk (65%) ratio of conventional product. (With AM/FM ANT Input Connector, Output correspond FFC connector)
4. AM/FM, and FM Only in the same form, each capable of RDS support (4 types).



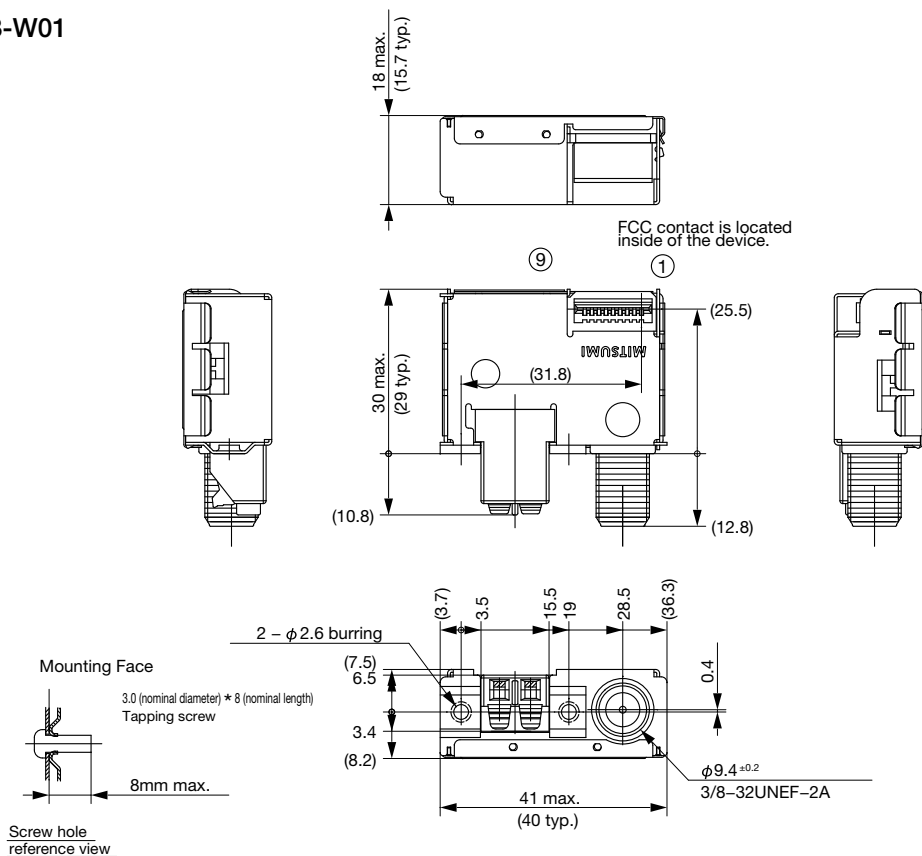
## SPECIFICATIONS

Item		FAEH08-W01
Supply Voltage		+5V
Current Consumption	FM	60mA max.
	AM	
Tuning Range	FM	76MHz ~ 108MHz (50,100 or 200kHz step)
	AM	520kHz ~ 1710kHz (9 or 10kHz step)
Input Impedance	FM	75Ω Unbalanced
	AM	-
Center IF	FM	128kHz
	AM	45kHz
Usable Sensitivity	FM	16dBμEMF max. (10dBμEMF typ.) (S/N=50dB, at 98MHz)
	AM	60dB/m max. (50dB/m typ.) (S/N=20dB, at 999kHz)
Image Rejection	FM	35dB min.
	AM	50dB min.
S/N Ratio	FM	Monaural 62dB min. (68dB typ.)
	AM	48dB min. (55dB typ.)
Output Level	FM	530mVrms
	AM	185mVrms
Separation	FM	FM : 32dB min. (45dB typ.)
	AM	-

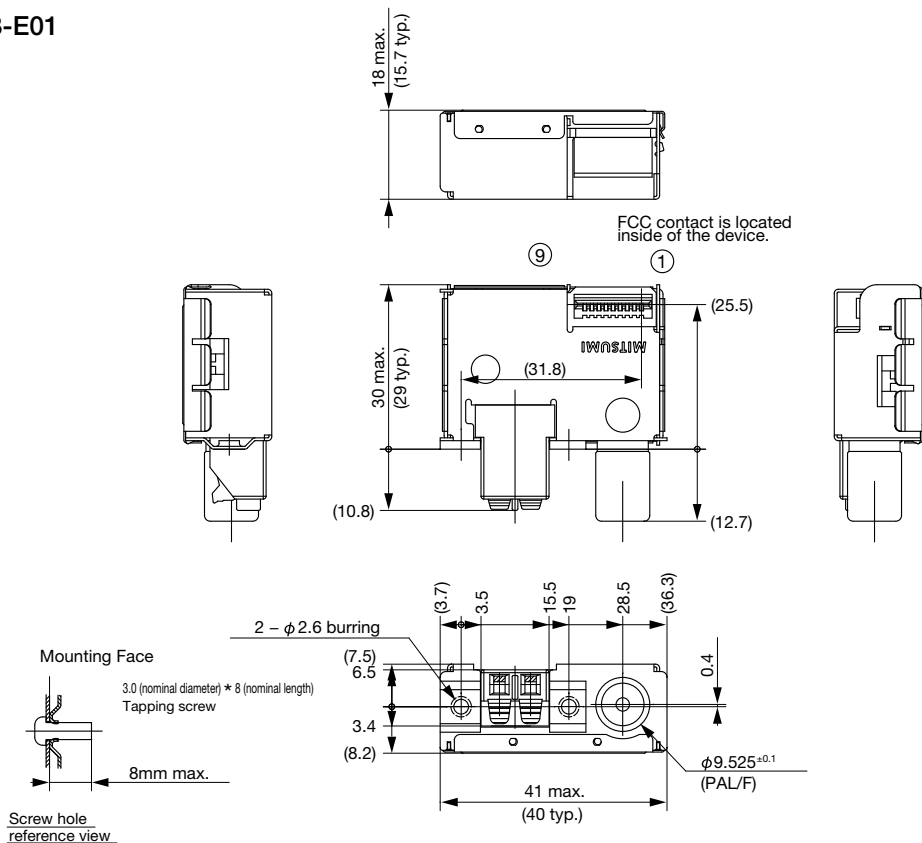
Compact, AM/FM Electronic Tuner for Popular Class Home Stereo

DIMENSIONS

FAEH08-W01



FAEH08-E01



EXTERNAL TERMINALS	
1.	Lch
2.	+5V
3.	Rch
4.	GND
5.	N.C.
6.	GPIO2
7.	SCLK
8.	SDIO
9.	RST

Unit : mm  
General Tolerance :  $\pm$ 0.5