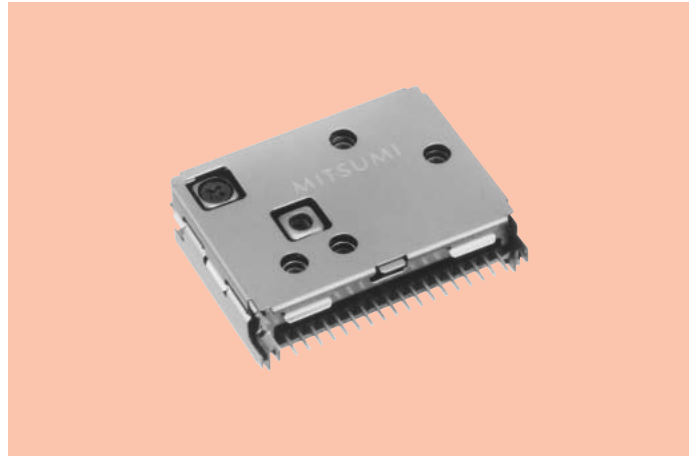


Compact, AM/FM Automotive Electronic Tuner for IF Digital DSP FAEC15-A01

AM/FM Electronic Tuners

FEATURES

1. AM/FM front end device for car-mount IF digital DSP.
2. Can support IBOC (HD Radio™).
3. Has better counter interference characteristics than those of conventional models.
4. Provide two types of tuner, vertical and horizontal types.
5. Ideal for mid-and high quality car stereo systems.
6. Supports various bands (normal overseas, North American, European, Japan).

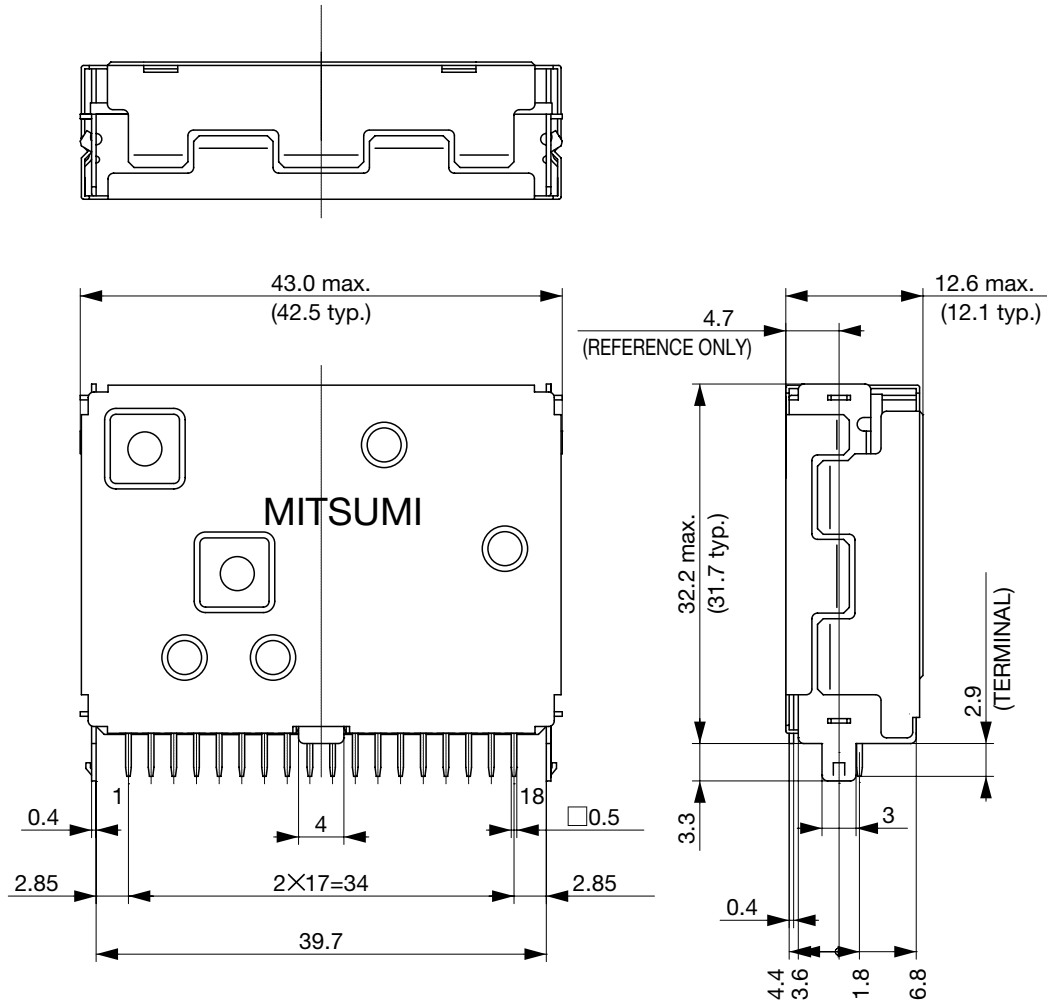


SPECIFICATIONS

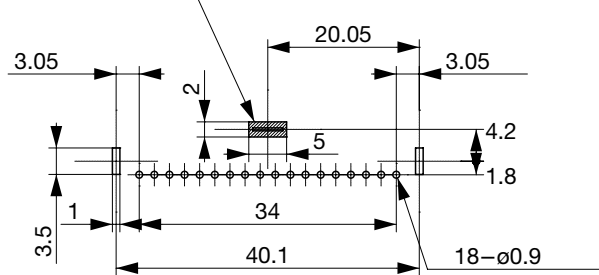
Item	FM	MW
Supply Voltage	8.5V	8.5V
Current Consumption	170mA max.	170mA max.
Tuning Range	87.5~108MHz	530~1710kHz
Input Impedance	75Ω unbalanced	-
Center IF	10.7MHz	10.7MHz
Usable Sensitivity	13dBμ max. (8dBμ typ.) *S/N 30dB	35dB max. (30dB typ.) *S/N 20dB
Image Rejection	50dB min. (60dB typ.)	50dB min. (70dB typ.)
IF Rejection	70dB min. (90dB typ.)	50dB min. (90dB typ.)
S/N Ratio (22.5kHz dev.)	55dB min. (mono) (1kHz 22.5kHz dev.)	48dB min. (400Hz 30% mod.)
IF Output Level (22.5kHz dev.)	74dBμV typ. (1kHz 22.5kHz dev.)	74dBμV typ. (400Hz 30% mod.)

*Note Specifications subject to change without notice.

DIMENSIONS



Zone that cannot mount parts or lay out patterns.



TERMINAL HOLE LAYOUT
(BOTTOM VIEW)
REFERENCE ONLY

EXTERNAL TERMINALS	
1. AMANT	10. SCL
2. GND	11. FREF1
3. FM ANT	12. FREF2
4. KAGC	13. IF_OUT1P
5. AFSAMPLE	14. IF_OUT1N
6. AFHOLD	15. IF_OUT2P
7. Vcc (8.5V)	16. IF_OUT2N
8. GND	17. IFAGCMSB
9. SDA	18. IFAGCLSB

Unit: mm
General Tolerance: ±0.5