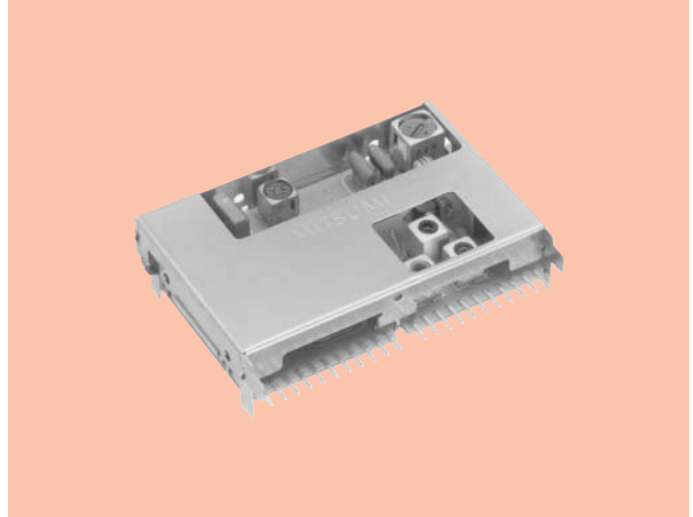


Compact, AM/FM Automotive Electronic Tuner FAE397-A11/P01/J01

FEATURES

1. Car AM/FM all-in-one electronic tuner with built-in PLL.
2. Self adjustment and setting by I2C, F.E+IF+NC+MPX composition.
3. LW~MW receiving without band switching circuit, due to the AM double conversion method.
4. With IF selectivity switching function. Improved reception performance relative to adjacent station interference.
5. Good radiation due to built-in PLL.
6. It is possible to use it also for the set with RDS (Europe) function.
7. Ideal for mid-and high quality car stereo systems.
8. Supports various bands (normal overseas, North American, European).
9. Equipped with EERROM.

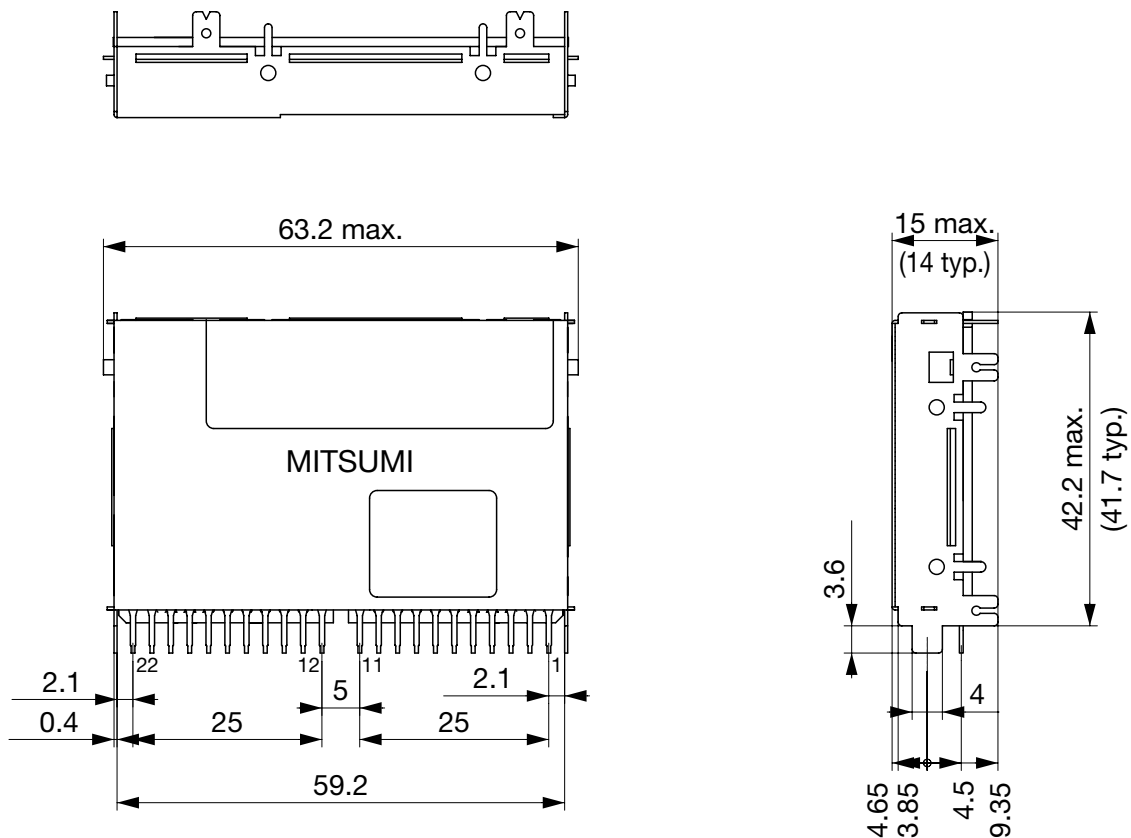


SPECIFICATIONS

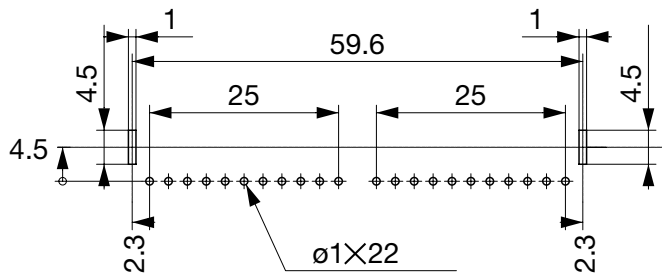
Item	FAE397-A11/P01/J01		FAE397-A11/P01/J01	FAE397-A11/P01
	FM		MW	LW
Supply Voltage	VCC	8.5 ± 0.5V	8.5 ± 0.5V	8.5 ± 0.5V
	VDD	5.0 ± 0.5V	5.0 ± 0.5V	5.0 ± 0.5V
Current Consumption	165mA max.		165mA max.	165mA max.
Tuning Range	A11 : 87.5~108MHz P01 : 65~108MHz J01 : 76.0~90MHz		A11/P01 : 522~1710kHz J01 : 522~1629kHz	A11/P01 : 144~279kHz J01: ——
Input Impedance	75Ω unbalanced		——	——
Center IF	1st IF=10.7MHz 2nd IF=450kHz		1st IF=10.7MHz 2nd IF=450kHz	1st IF=10.7MHz 2nd IF=450kHz
Usable Sensitivity	10dBμ max. (5.0dBμ typ.) ☆S/N 30dB		33dBμ max. (28dBμ typ.) ☆S/N 20dB	37dBμ max. (32dBμ typ.) ☆S/N 20dB
Image Rejection	55dB min.		55dB min.	55dB min.
IF Rejection	70dB min.		50dB min.	50dB min.
S/N Ratio	54dB min. (mono) (1kHz, 22.5kHz dev.)		45dB min. (400Hz, 30% mod.)	45dB min. (400Hz, 30% mod.)
Output Level	185mV/rms typ. (1kHz, 22.5kHz dev.)		230mV/rms typ. (400Hz, 30% mod.)	230mV/rms typ. (400Hz, 30% mod.)
Separation	25dB min. (Input 60dB, 40kHz dev.+Pilot 10%)		——	——

*Note Specifications subject to change without notice.

DIMENSIONS



EXTERNAL TERMINALS	
1. AM ANT	12. S-STOP
2. GND	13. SDA
3. FM ANT	14. SCL
4. GND	15. Vcc (5V)
5. N.C	16. Vcc (8.5V)
6. N.C	17. Rch
7. N.C	18. Lch
8. Vcc (8.5V)	19. Quality out
9. FSV (Vsm)	20. AFS
10. AM ST/MP	21. MPX out
11. GND	22. GND



TERMINAL HOLE LAYOUT
(DIP SIDE)
*REFERENCE ONLY

Unit: mm
General Tolerance: ±0.2