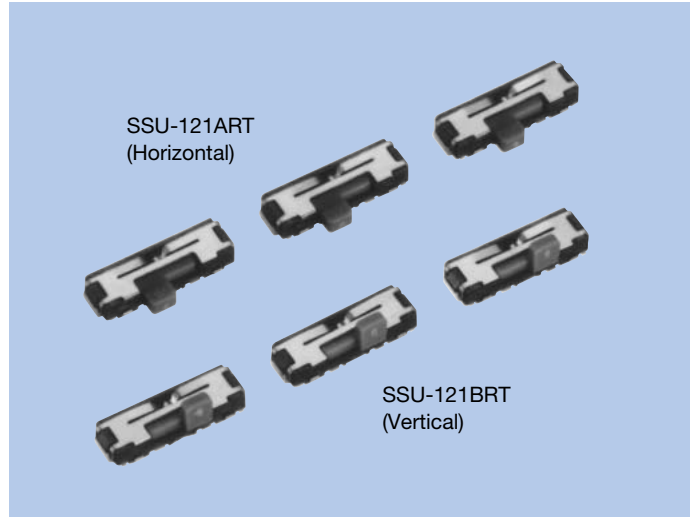


H=1.2mm Slide Switches SSU Series

FEATURES

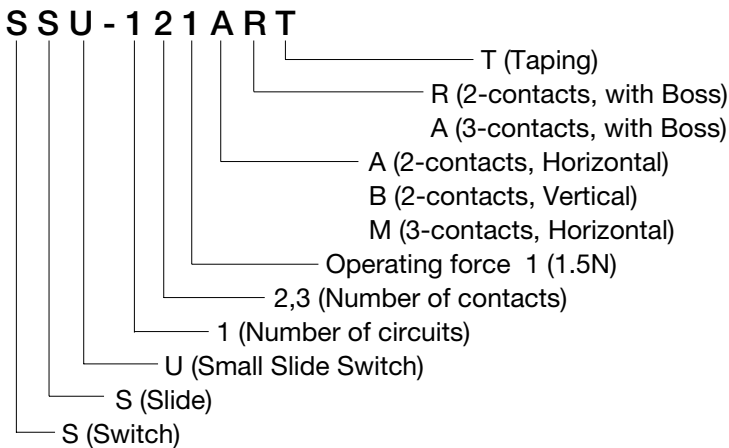
1. Small size (1-pole, 2-contacts : 6.8 x 2.0mm, 1-pole, 3-contacts : 8.1 x 2.0mm), so small mounting area.
2. Slim slide switch (1.2mm in height when installed).
3. Suitable for SMT reflow soldering.
4. Tape packaging supporting the auto mounting.
5. Travel length : 1.5mm.
6. Horizontal knobs (1-pole, 2-contacts and 3-contacts) and vertical knobs (1-pole, 2-contacts) are available.



APPLICATIONS

1. For portable audios, remote controllers, DSC, video players, mobile phones, PDAs, etc.
2. For power switches, hold switches, mode select switches.

MODEL NAME CODE



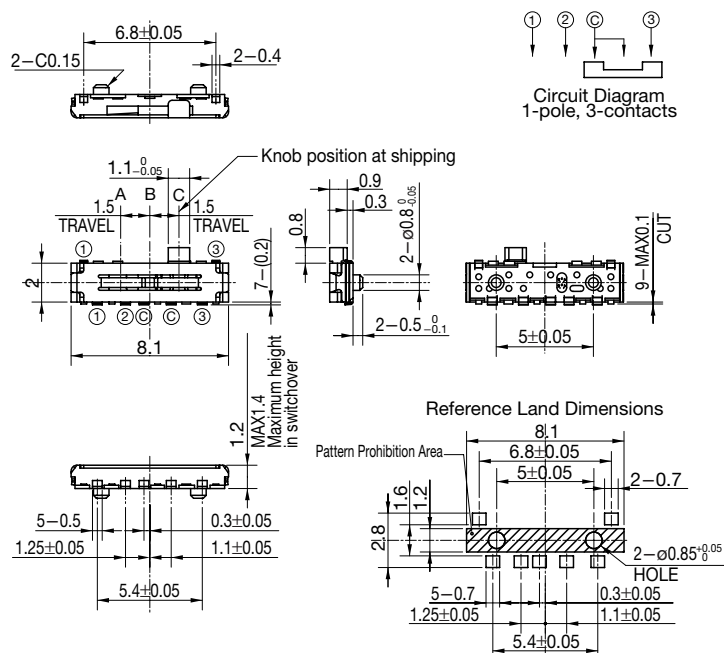
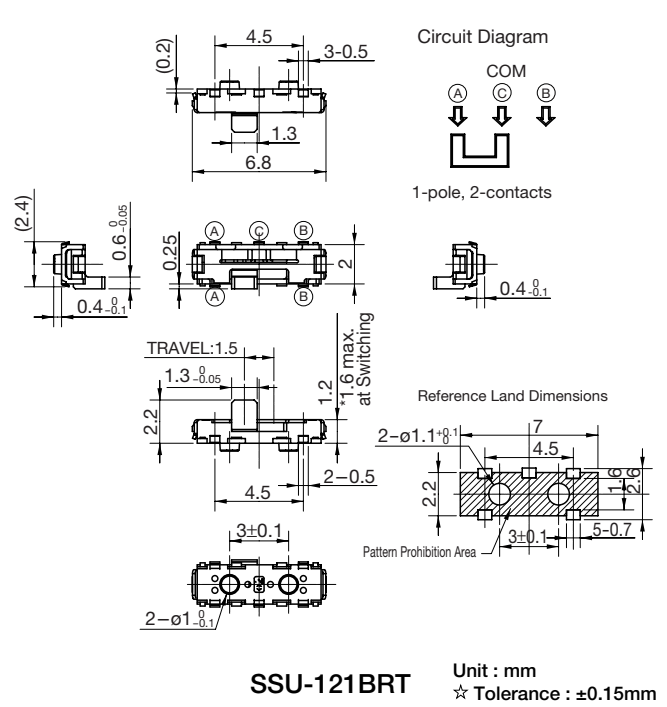
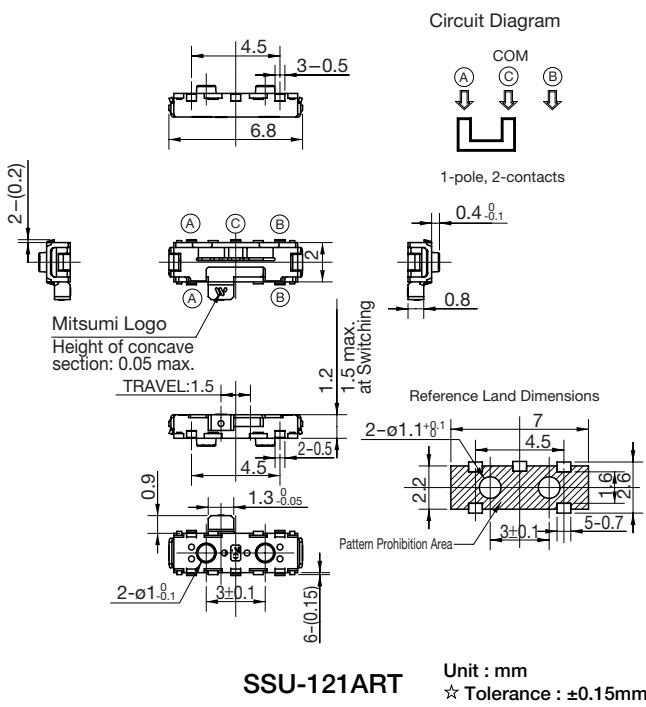
SPECIFICATIONS

Electrical Characteristics	Rating	0.3A, 4V DC (Resistive load)
	Contact Resistance	1Ω or less
	Insulation Resistance	10MΩ or more
	Withstand Voltage	1 minute at 100V AC
Mechanical Characteristics	Operating Force	2-contacts type 1.5±1.0N
		3-contacts type a→b/c→b 1.5±1.0N b→a/b→c 1.6±1.0N
		Life

TYPE

Model Name Code	Order Number	No. of Poles	No. of Contacts	Travel (mm)	Knob Direction	Terminal Earth	Pcs/Reel
SSU-121ART	R66 7016	1	2	1.5	Horizontal	Without	5,000
SSU-121BRT	R66 7053	1	2	1.5	Vertical	Without	3,000
SSU-131MAT	R66 7065	1	3	1.5	Horizontal	Without	4,000

DIMENSIONS



Unit : mm
☆ Tolerance : ±0.15mm