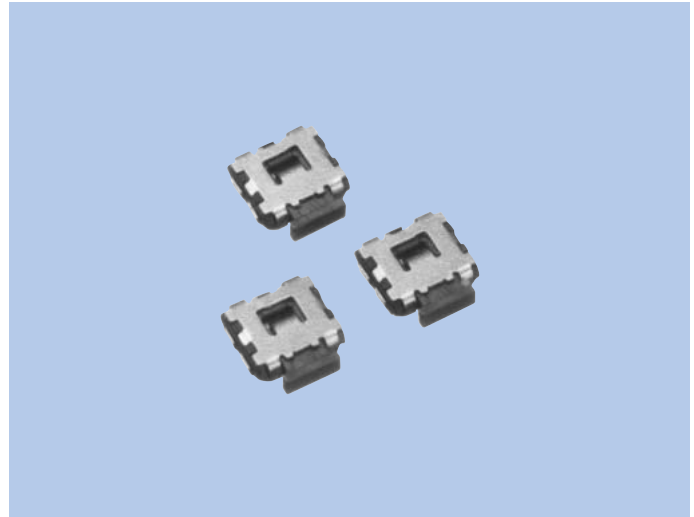


# Side Click Type Tactile Switches SOU Series

## FEATURES

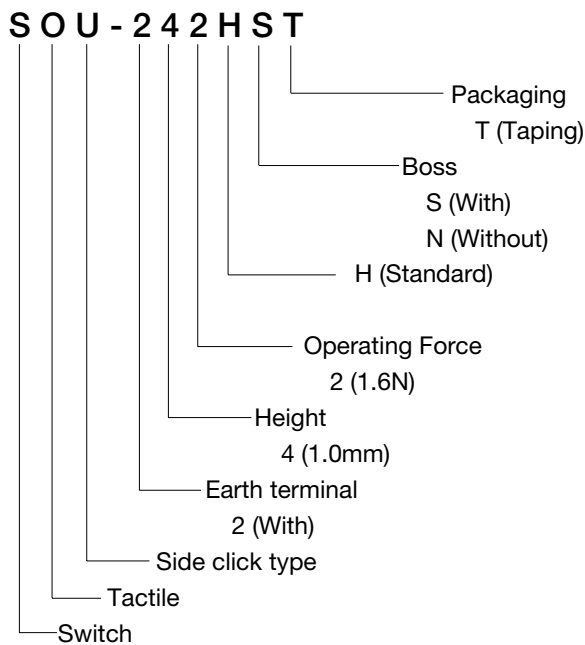
1. Minimized mounting area.
2. Using the stainless steel metal dome with long life and sharp feeling.
3. Suitable for controllers with side click in small equipment.
4. Suitable for SMT reflow soldering.
5. Our original grounding structure can prevent flux from entering into a switch.



## APPLICATIONS

1. For mobile phones and small digital devices.

## MODEL NAME CODE



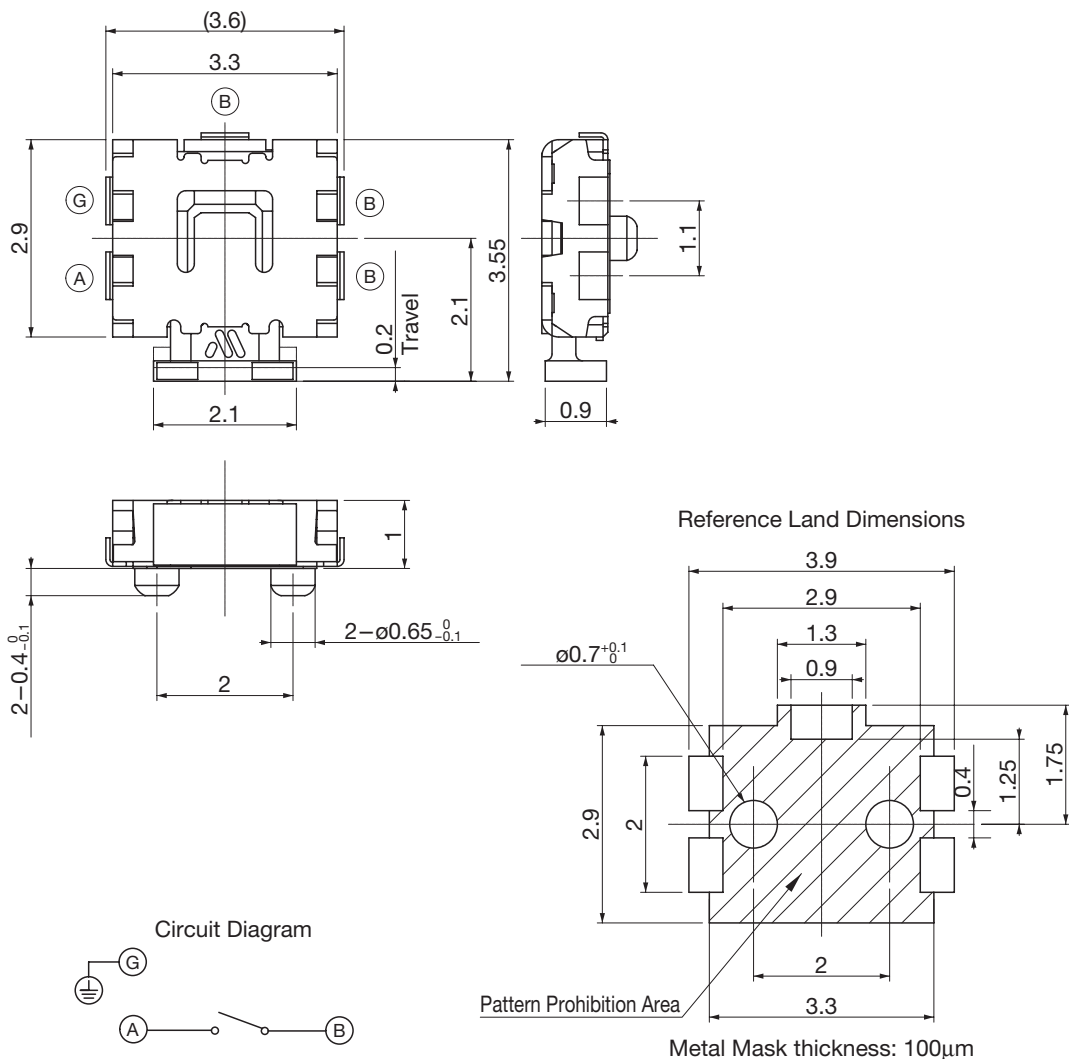
## SPECIFICATIONS

Electrical Characteristics	Rating	50mA, 12V DC
	Contact Resistance	1Ω or less
	Insulation Resistance	10MΩ or more
	Withstand Voltage	1 minute at 100V
Mechanical Characteristics	Operating Force	1.6N
	Life	100,000cycles

## TYPE

Model Name Code	Order Number	Operating Force	Boss	Pcs
SOU-242HST	R66 6939	1.6N	With	5,000
SOU-242HNT	R66 6994	1.6N	Without	5,000

## DIMENSIONS



☆Tolerance: ± 0.3mm