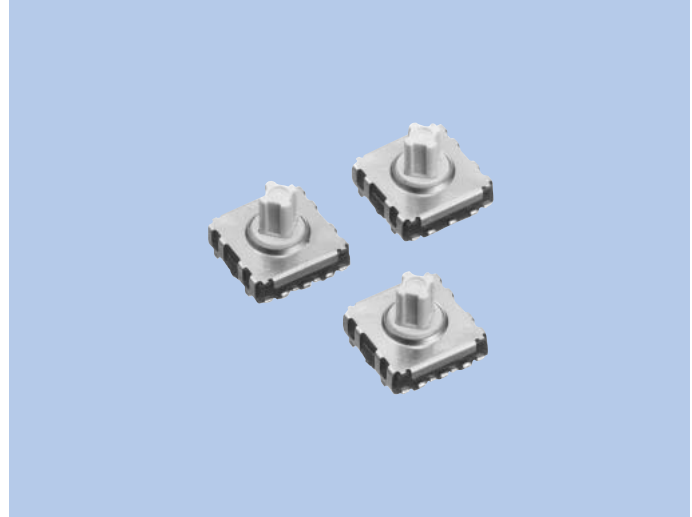


Multi-Function Tactile Switches SOQ Series

FEATURES

1. Minimized mounting area.
2. 1-pole, 5-contacts structure is adopted so that switches in this series can be used in a comparator circuit.
3. Long life and enhanced tactile feeling by unique 2 layer construction.
4. 4 direction operation and center click switch.
5. Suitable for SMT reflow soldering.

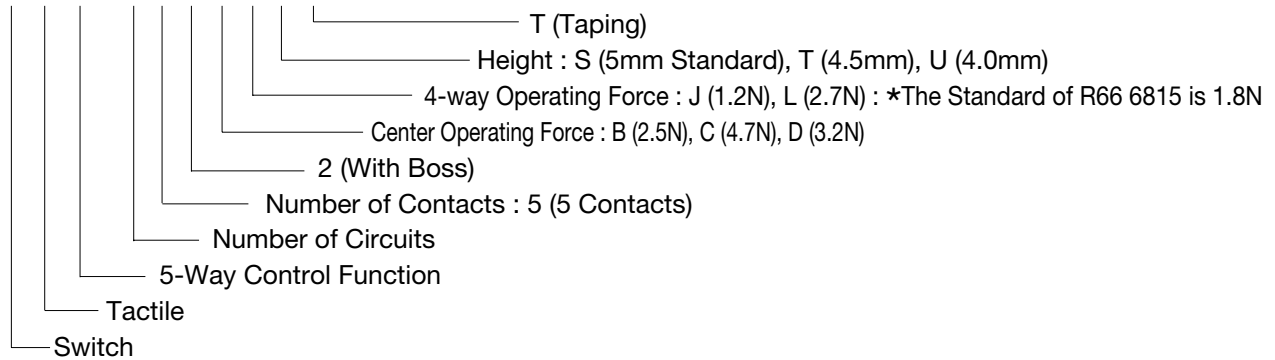


APPLICATIONS

1. For mobile phones, DSCs, Game equipment and PDAs.

MODEL NAME CODE

S O Q - 1 5 2 B J S T



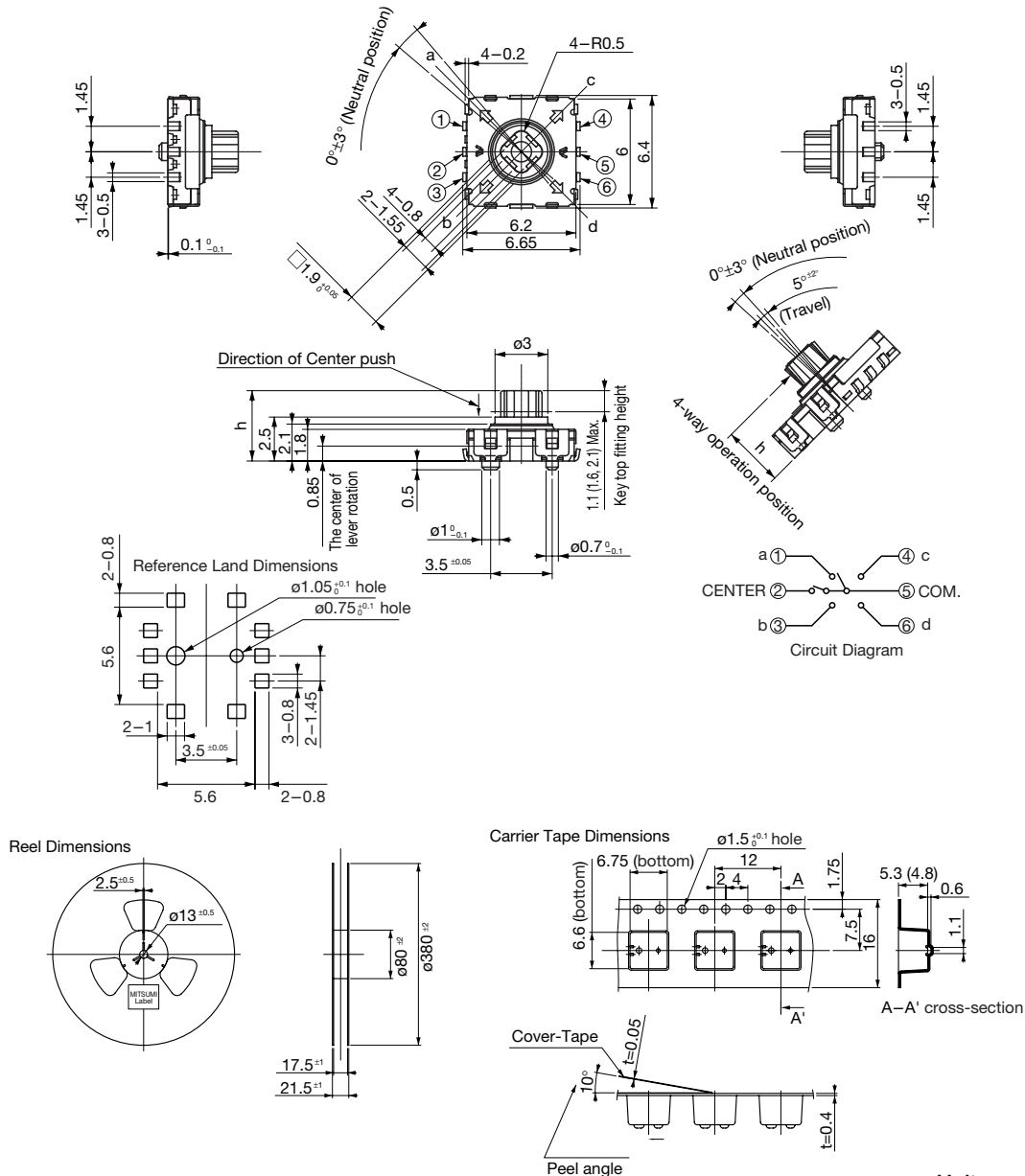
SPECIFICATIONS

Electrical Characteristics	Rating		50mA, 12V DC
	Contact Resistance		200mΩ or less
	Insulation Resistance		100MΩ or more
	Withstand Voltage		1 minute at 100V
Mechanical Characteristics	4-Way	J Type	1.2N *The Standard of R66 6815 is 1.8N
		L Type	2.7N
	Center	B Type	2.5N
		C Type	4.7N
		D Type	3.2N
Life	BJ Type	200,000cycles	
	CL Type	100,000cycles	
	DJ Type	100,000cycles	

TYPE

Model Name Code	Order Number	Operating Force		Number of Contacts	Mounting Height (h)	Pcs/Reel
		Center	4-Way			
SOQ-152BJST	R66 6538	2.5N	1.2N	5	5.0mm	1,000
SOQ-152BJTT	R66 6539	2.5N	1.2N	5	4.5mm	1,000
SOQ-152CLST	R66 6540	4.7N	2.7N	5	5.0mm	1,000
SOQ-152CLTT	R66 6541	4.7N	2.7N	5	4.5mm	1,000
SOQ-152DJST	R66 6542	3.2N	1.2N	5	5.0mm	1,000
SOQ-152DJTT	R66 6543	3.2N	1.2N	5	4.5mm	1,000
SOQ-152BJUT	R66 6815	2.5N	1.8N	5	4.0mm	1,000

DIMENSIONS



*One reel accommodates 1,000 pieces (Ø380).
 Inside (), 4.5mm specification.

Unit : mm
 ☆Tolerance : ±0.3mm