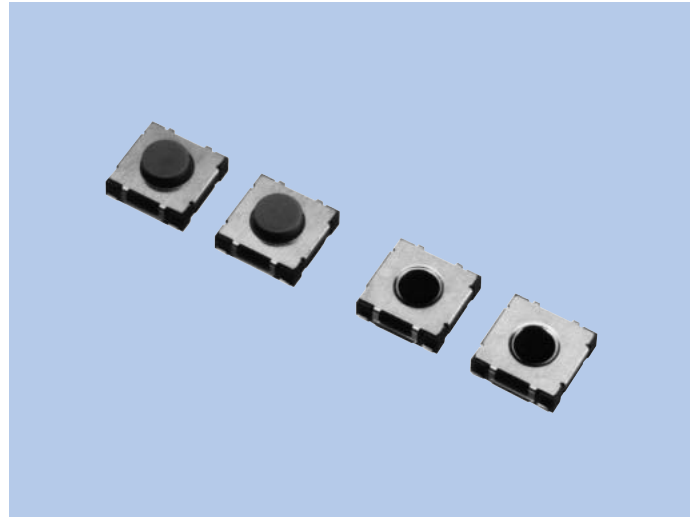


# With Button Tactile Switches SON Series

## FEATURES

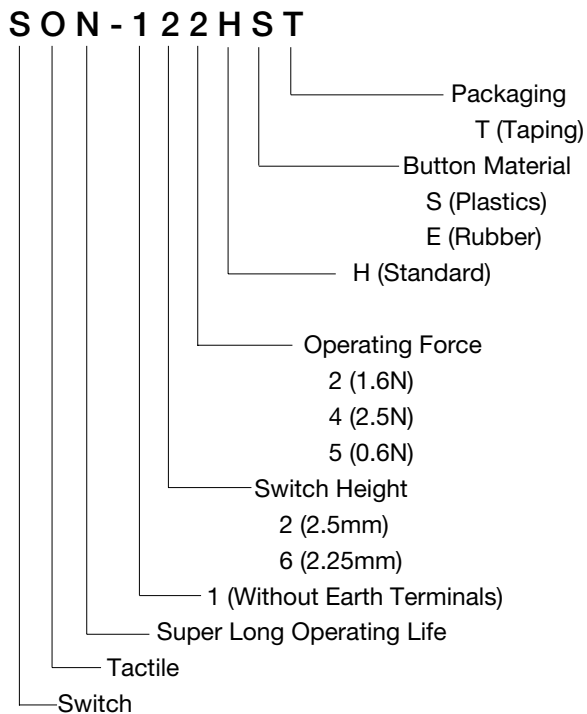
1. Minimized mounting area.
2. Long lifetime (10,000,000 presses: SON-165HET) achieved via a combination of stainless steel metal dome and rubber.
3. Suitable for SMT reflow soldering.



## APPLICATIONS

1. For Audios, TVs, DVD/Blu-ray Disc Players, Mice, Game equipments, Car electric equipments, etc.

## MODEL NAME CODE



## SPECIFICATIONS

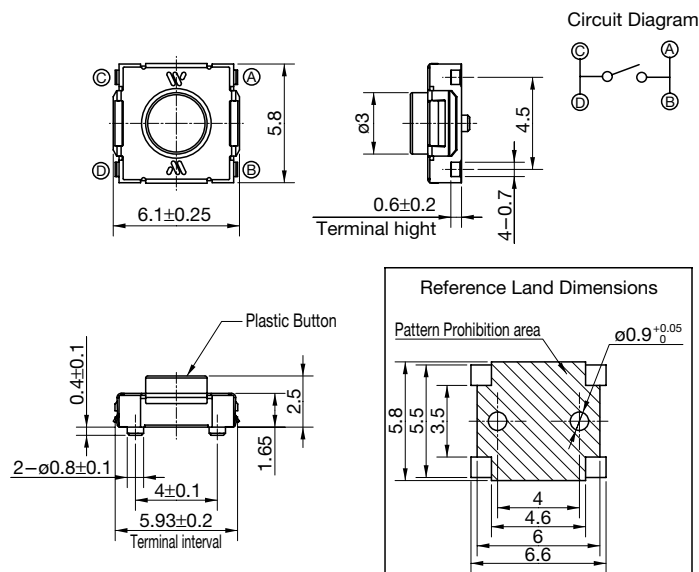
Electrical Characteristics	Rating	20mA, 12V DC (Resistance load)
	Contact Resistance	200mΩ or less
	Insulation Resistance	50MΩ or more
	Withstand Voltage	1 minute at 100V AC

## TYPE

Model Name Code	Order Number	Operating Force	Travel (mm)	Life (cycles)	Pcs
SON-122HST	R66 6970	1.6N	0.2	1,000,000	2,500
SON-124HST	R66 7023	2.5N	0.2	100,000	2,500
SON-165HET	R66 7026	0.6N	0.4	10,000,000	2,500

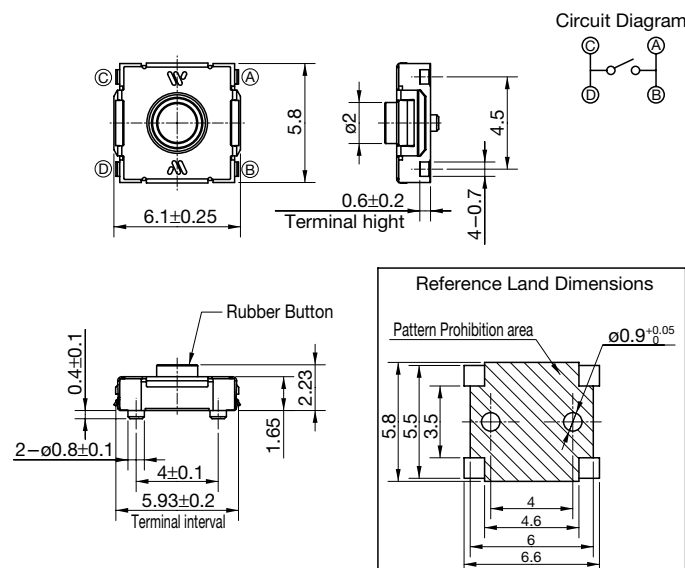
## DIMENSIONS

SON-122HST  
SON-124HST



Unit : mm

SON-165HET



Unit : mm