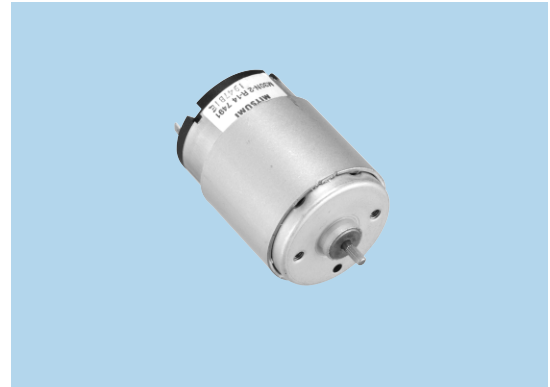


DC Mini-Motors M30N-2 Series

Applications

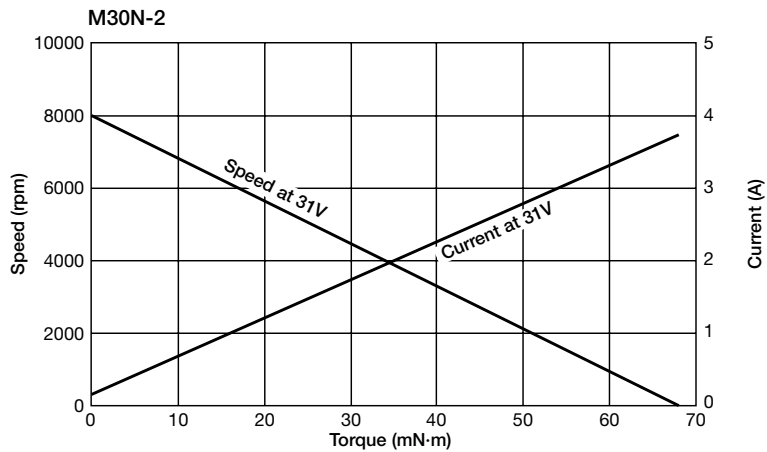
Scanner



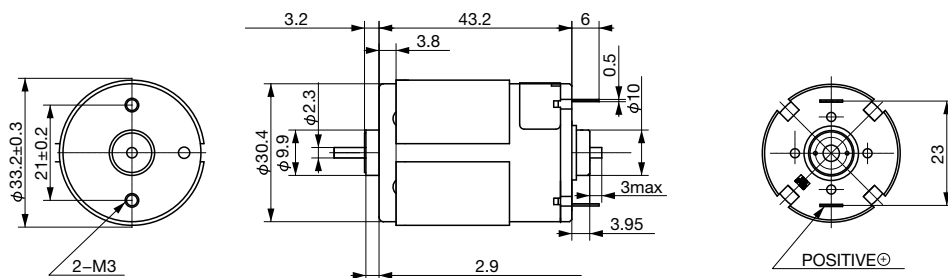
SPECIFICATIONS

Item	SPEC-NO
Rated Voltage (V)	31
Voltage Range (V)	28~34
No Load Speed (rpm)	8000
No Load Current (mA)	160 or less
Starting Torque (mN·m)	68 or more
Rotation	CW/CCW

CHARACTERISTICS



DIMENSIONS



Unit : mm