

DC Mini-Motors

M22E-11 Series

DC Mini-Motors

Applications

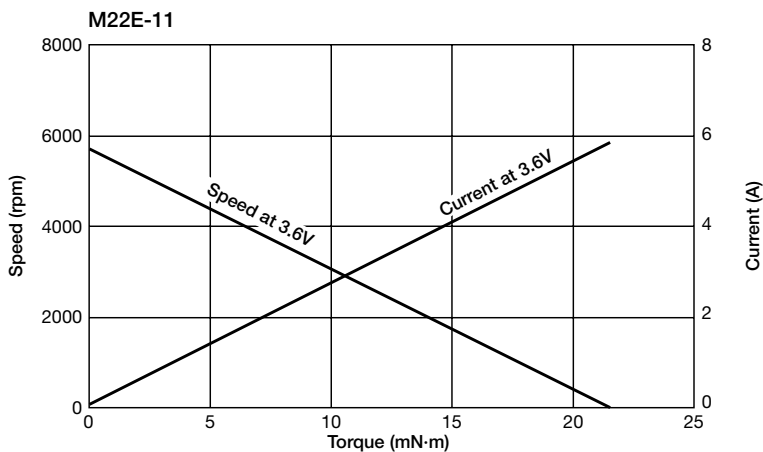
Shaver



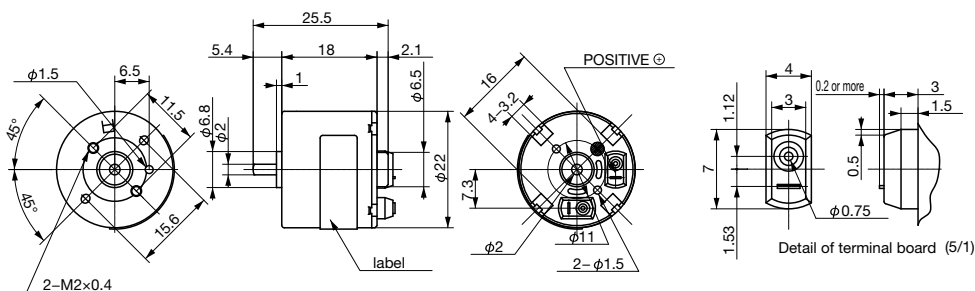
SPECIFICATIONS

Item	SPEC-NO
Rated Voltage (V)	3.6
Voltage Range (V)	2.5~4.0
Rated Load (mN·m)	3.2
No Load Speed (rpm)	5700
No Load Current (mA)	80
Starting Torque (mN·m)	21.5 or more
Rotation	CW/CCW

CHARACTERISTICS



DIMENSIONS



Unit : mm