

DC Mini-Motors

M10E-2 Series

Applications

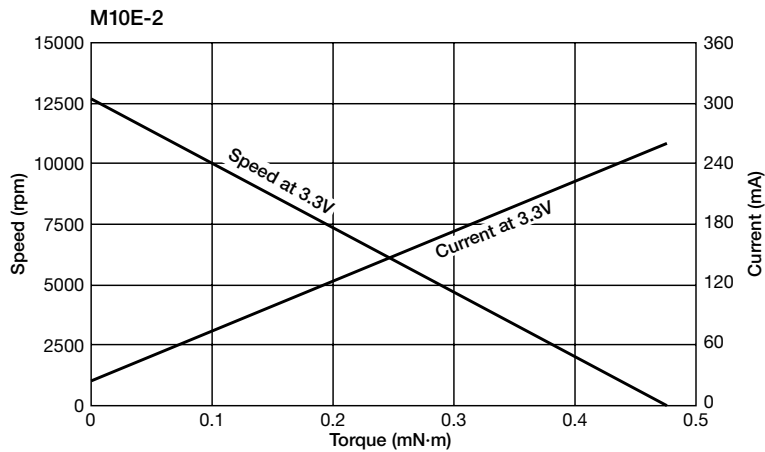
Amusement



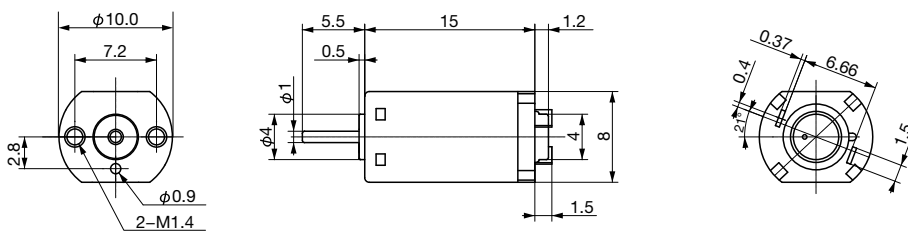
SPECIFICATIONS

Item	SPEC-NO	R-14 A141
Rated Voltage (V)		3.3
Voltage Range (V)		1.5~5
Rated Load (mN·m)		0.127
No Load Speed (rpm)		12700
No Load Current (mA)		25
Starting Torque (mN·m)		0.476 or more
Rotation		CW/CCW

CHARACTERISTICS



DIMENSIONS



Unit : mm