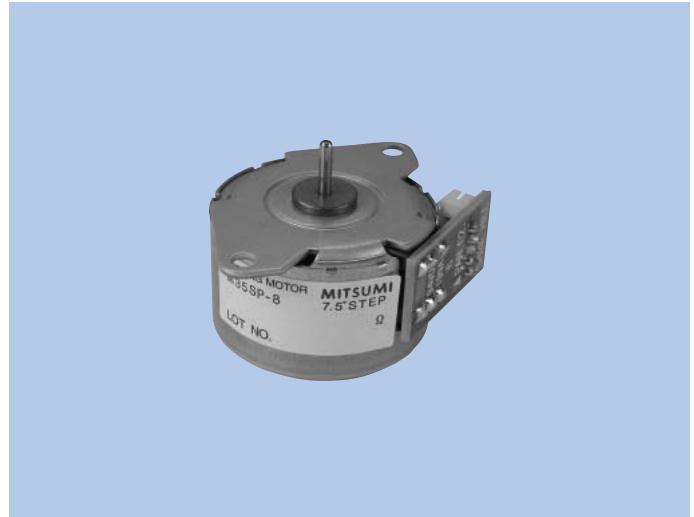


# Stepping Motors

## M35SP-8

### OUTLINE

"M35SP-8" has been endowed with the highest output torque among the 35mm outer diameter model series—holding torque : 38.2mN·m, pull-out torque : 23.0mN·m/200pps, and pull-in torque : 22.5mN·m/200pps (12V DC). Outstanding running noiselessness acquired. This model that is the most adequate to future compact electronic apparatuses.



### FEATURES

1. Compact size and high output torque.
2. Superior running quietness and stability.
3. Step angle : 7.5°.
4. Excellent responsiveness acquired.

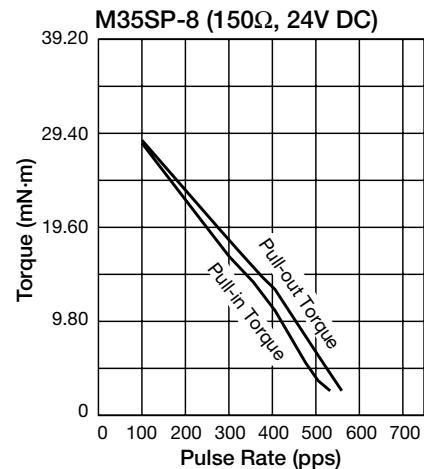
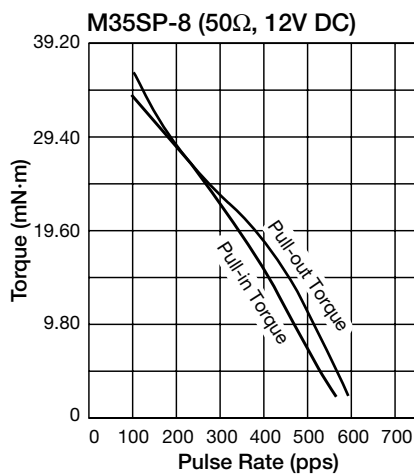
### USES

Printers, multifunction machines, copy machines, FAX, and such.

## SPECIFICATIONS

Items	M35SP-8	
	DC 12V	DC 24V
Rated Voltage	DC 12V	DC 24V
Working Voltage	DC 10.8-13.2V	DC 21.6-26.4V
Rated Current/Phase	259mA	173mA
No. of Phase	4 Phase	4 Phase
Coil DC Resistance	50Ω/phase±7%	150Ω/phase±7%
Step Angle	7.5°/step	7.5°/step
Excitation Method	2-2 Phase excitation (Unipolar driving)	
Insulation Class	Class E insulation	Class E insulation
Holding Torque	38.2mN·m	42.1mN·m
Pull-out Torque	23.0mN·m/200pps	28.4mN·m/200pps
Pull-in Torque	22.5mN·m/200pps	27.9mN·m/200pps
Max. Pull-out Pulse Rate	580pps	610pps
Max. Pull-in Pulse Rate	495pps	520pps

## CHARACTERISTICS



## DIMENSIONS

