

# Stereo Magnetic Heads (Shift Reverse) P-7742 B Series

## FEATURES

1. This is a shift type auto-reverse compactly playback head.
2. Symmetrical arrangement of the R and L channels has materialized superb interchannel balance.
3. It is a high-reliability head with the tape sliding resin section removed by means of gutter and capable of coping with surface.



## USES

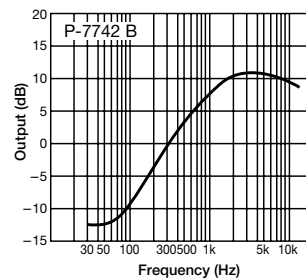
1. Optimally suited for high-grade auto-reverse cassette deck and auto-reverse automotive stereo.

## STANDARD MODEL

P-7742-BB-05

## CHARACTERISTICS

### ■ Playback Frequency Characteristics



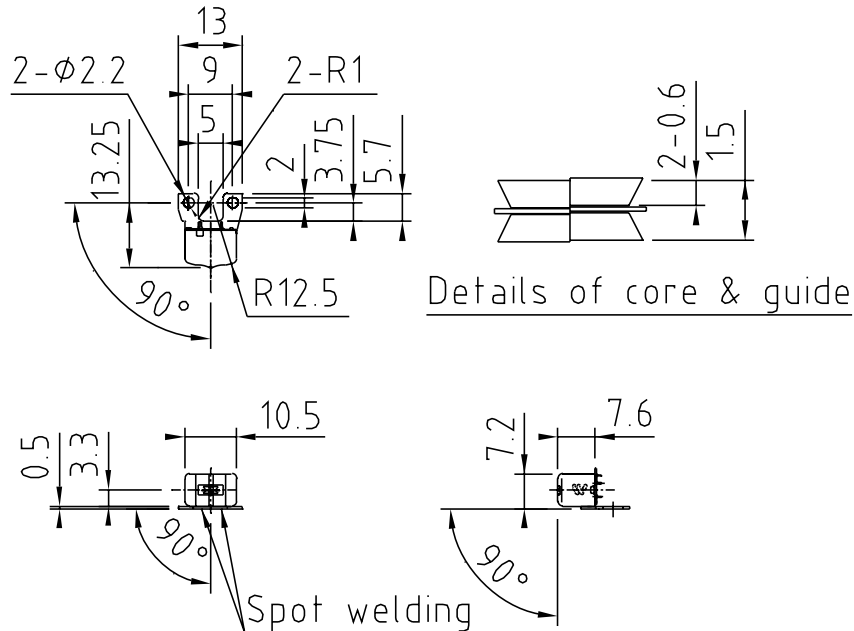
Tape speed: 4.76cm/S  
 Test tape: TEAC MTT-256 (3180 $\mu$ s+120 $\mu$ s)  
 0dB = -76.5dBv (DIN Ref. Level -4dB)

**SPECIFICATIONS**

Item	Specifications				Unit	Remarks
	AB	BB	CB	DB		
Type						
	Control freq.	8	10	12.5	14	kHz
D. C. Resistance		240±20%				Ω DC 20°C
Impedance	1kHz	800±25%				Ω 100μA
Induction Noise		-75.0 max.				dBv 50Hz, 3 Oe
Test Tape	Playback	TEAC MTT-256				3180μs+120μs
Playback	315Hz	-76.5±2dB				dBv DIN Ref. level -4dB
	8k/315Hz	10±3				dB
	10k/315Hz		9.5±3			dB
	12.5k/315Hz			9±3		dB
	14k/315Hz				8.5±3	dB
Playback Separation	1kHz	45 min.				dB TEAC MTT-141N
Playback Crosstalk	1kHz	50 min.				dB TEAC MTT-121N
Tape Speed		4.76cm/S · 1 7/8 I. P. S.				

- 1V=0dB
- Specifications may be changed for the purpose of improvement and upgrading.

**DIMENSIONS**



Unit : mm