

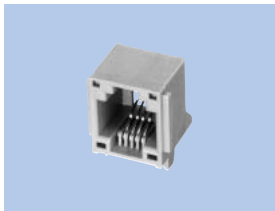
## Modular Telephone Connectors

The MITSUMI's modular telephone connector is manufactured to the full in accordance with the FCC Standard. In addition to jacks with card edge type, and of circuit board dip type, products, such as plugs are widely prepared.

## PRODUCT TABLE

### Dip Solder Type

CSK-290  
 CSB-290  
 CTM-A36  
 CTM-A85  
 CTM-B65  
 CTM-B66



Uses	Models
Low type for 6-pin and 4-pin	CSK-290E
L type for 6-pin	CSK-290L
Round contact (press pin) for 8-pin, 6-pin, 4-pin	CSB-290A
Second straight type for 6-pin	CSB-290N
Type for 6-pin (press pin)	CTM-A36
For 4-pin handset	CTM-A85
6-pin transverse type	CTM-B65
4-pin transverse type	CTM-B66

## SPECIFICATIONS

### ELECTRICAL CHARACTERISTICS

Item	Uses · Models	Card Edge Type	Dip Solder Type
		CSK-285	CSK-290~CTM-B66
Rated Current		2A DC	2A DC
Withstanding Voltage		500V AC (rms) 1minute	1000V AC (rms) 1minute
Insulation Resistance		10MΩ min. (at 500V DC)	10MΩ min. (at 500V DC)
Contact Resistance		100mΩ max.	20mΩ max.
Operating Temperature		-30~+70°C	-30~+70°C

## MATERIAL & FINISH

Component Parts	Material		
Insulator	ABS resin	PBT resin	PBT resin
Contact	Copper Alloy	Copper Alloy	Copper Alloy
Contact Finish	Gold plating	Gold plating	Gold plating