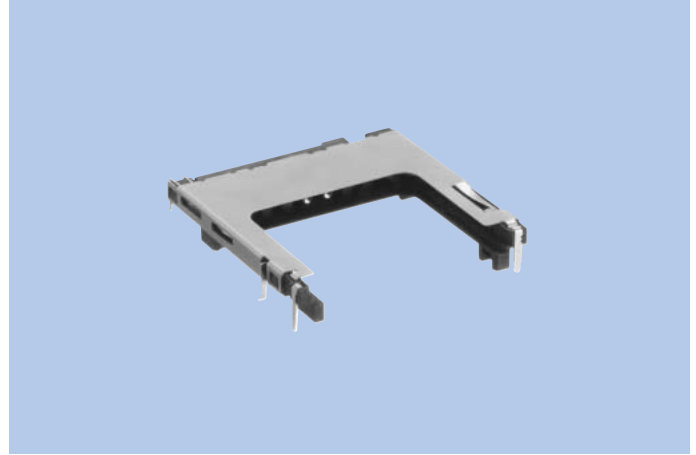


SD Memory Card Connectors

CIM-E90

FEATURES

1. SMT-type SD memory card connector.
2. Fantastic touch! With push-in push-out eject function.
3. Card detection switch and write protect switch provided.
4. Ideal for smaller boards! Stand-off height of only 1.8mm (connector is ultra-thin, with height of only 2.8mm).
5. Half-lock provided to prevent the card from falling out.



HOW TO ORDER

E90-009-21 0-A G G E
1 2 3 4 5 6 7 8

- 1 Series No. (E90)
- 2 No. of contacts (009:9pins)
- 3 material (21:LCP resin)
- 4 Housing UL grade (0:UL94V-0)
- 5 Contact plating (A:Contact area Gold, Read area Gold)
- 6 Contact plating thickness (G:0.3μm)
- 7 Contact style (G:Angle)
- 8 Package (E:Taping)

SPECIFICATIONS

ELECTRICAL CHARACTERISTICS

Rated Voltage	AC 50V (rms)
Rated Current	0.5A
Withstanding Voltage	500V AC (rms) 1minute
Insulation Resistance	1000MΩ min. (at 500V DC)
Contact Resistance	100mΩ max.

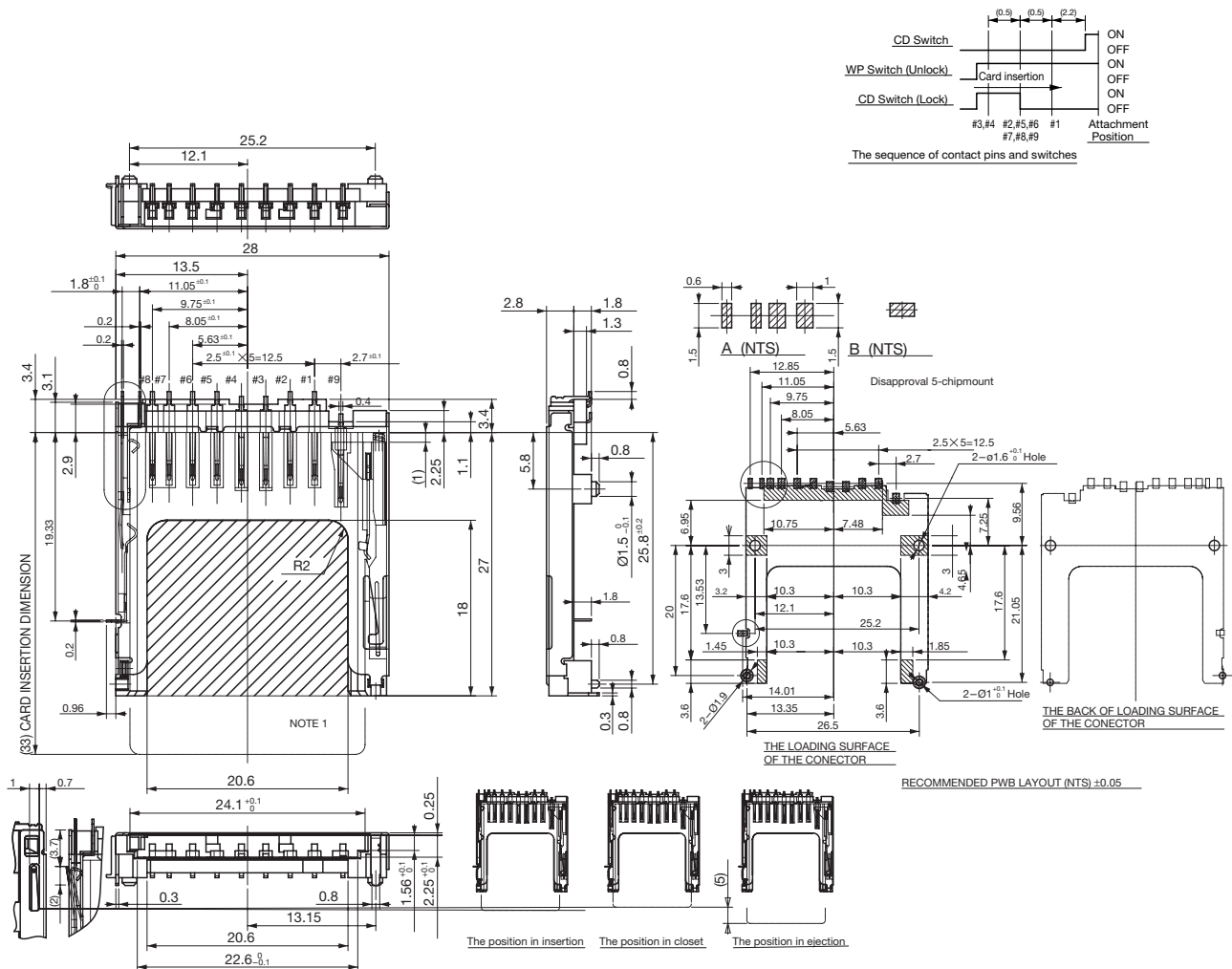
MECHANICAL CHARACTERISTICS

Life (Matching Cycle)	10,000 times
Card Insertion Force	4.9N (0.5kgf) ~ 9.8N (1kgf)
Using Temperature Range	-25~+90°C

MATERIAL & FINISH

Component Parts	Material	Finish
Housing	LCP resin	(Black)
Contact	Copper Alloy	Gold plating
CD Switch	Copper Alloy	Gold plating
CD · WP Switch	Copper Alloy	Gold plating
WP Switch	Copper Alloy	Gold plating
Wing	Copper Alloy	Solder plating or Gold plating
Plate	SUS	-
Slider	PPA resin	(Black)
Coil Spring	SUS	-
Look Pin	SUS	-

DIMENSIONS



Unit: mm
 ☆Tolerance: ±0.3