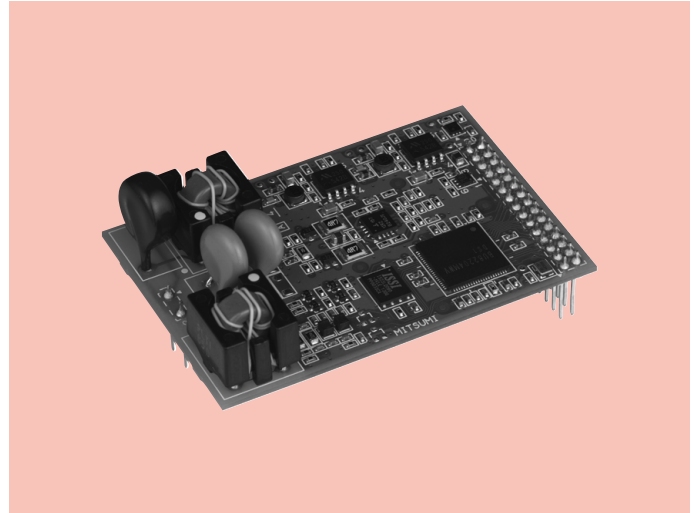


# HD-PLC Module DRT-J570

## OUTLINE

[HD-PLC] inside module equipped with an superimposed circuit.

It have various I/F and home appliance control, a sensor, the various control units. It is most suitable for embedded system.



## FEATURES

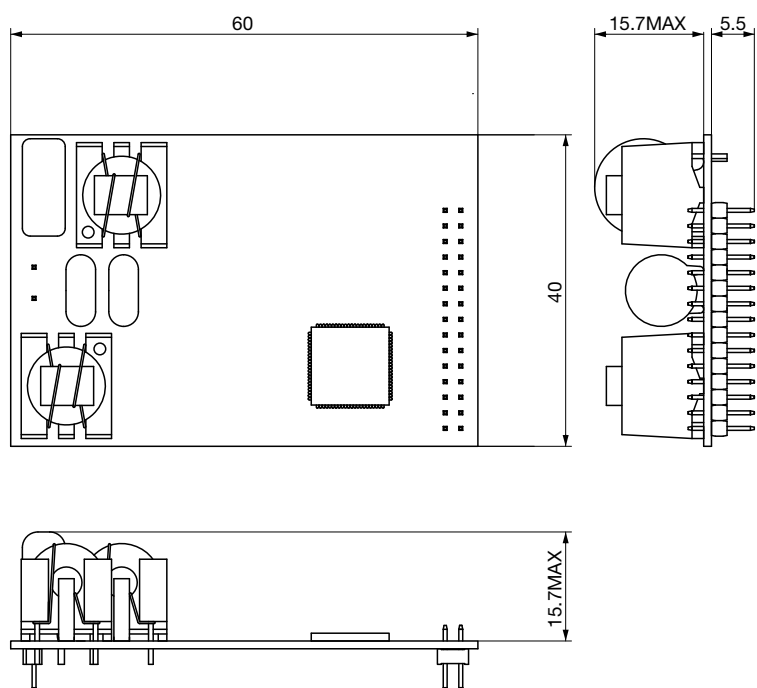
1. Low power consumption. Small size module.
2. Directory control and monitor from GPIO, I2C and PWM.
3. Included superimposed circuit. Single power supply operation.

## SPECIFICATIONS

Item	Specifications
Standard	[HD-PLC] inside
Connection	[HD-PLC] inside use with [HD-PLC] Complete
Bandwidth	2~28MHz
Modulation	Wavelet OFDM (2-4PAM)
Data Rate (UART)	115K
Error Correction	RS-CC
Security	AES 128bit
Interface	UART, I <sup>2</sup> C, PWM, GPIO
Software, CPU (include)	ARM7TDMI TCP/IP Protocol stack UART host interface command ECHONET Lite middleware (option)
Power	DC 5V
Environment	-15~+60°C
Weight	About 15g

\*Specifications subject to change without notice for improvements.

**DIMENSIONS**



Unit : mm