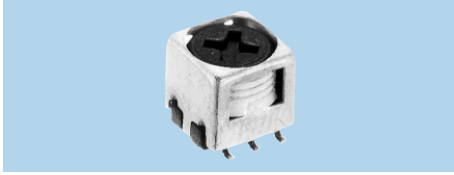


# Coils for Corner sensor

## K5-N, K5-R, K7-R Series

### K5-N

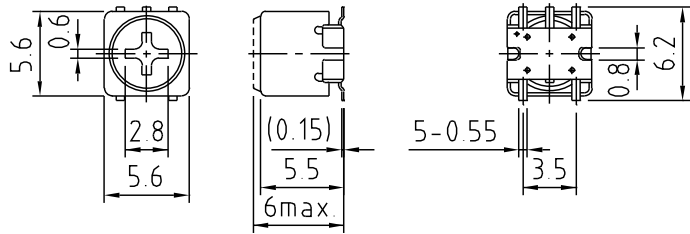


**Specifications**

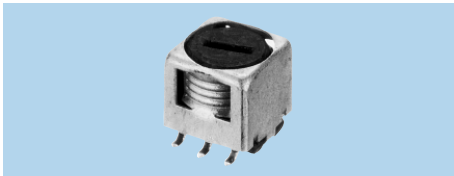
- (1) 1~5,900 $\mu$ H
- (2) 0.1~20MHz
- (3) F: $\pm$ 2%  
L: $\pm$ 5%
- (4) -
- (5) Q:50~100

**Features**

- SMD
- 1,000pcs./Reel



### K5-R2

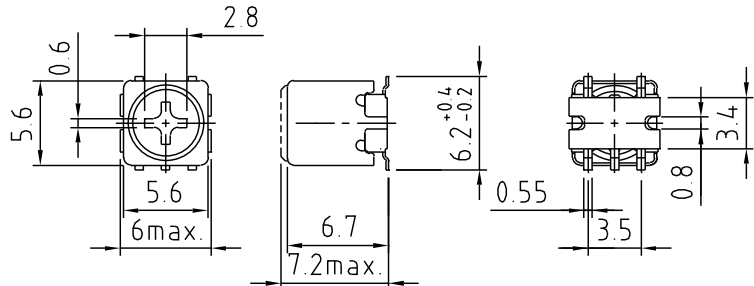


**Specifications**

- (1) 1~6,700 $\mu$ H
- (2) 10~500kHz
- (3) F: $\pm$ 2%  
L: $\pm$ 4%
- (4) -
- (5) Q:50~80

**Features**

- SMD
- 500pcs./Reel



### K5-RS

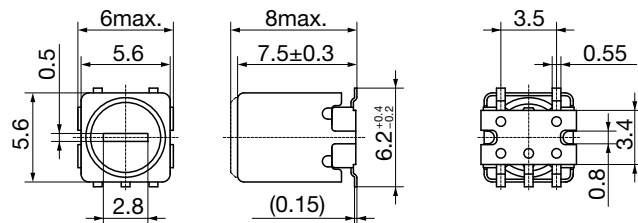


**Specifications**

- (1) 0.1~8.5mH
- (2) 10~500kHz
- (3) F: $\pm$ 2%  
L: $\pm$ 5%
- (4) -
- (5) Q:50~80

**Features**

- SMD
- 500pcs./Reel



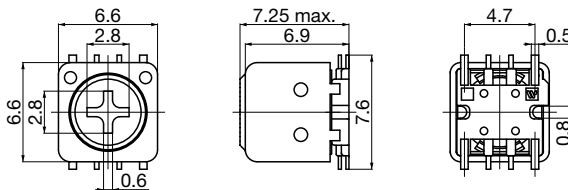
- (1) Inductance
- (2) Operational frequency
- (3) Variable range of F & L
- (4) Internal capacitance
- (5) Unloaded Q

**K5-R3**

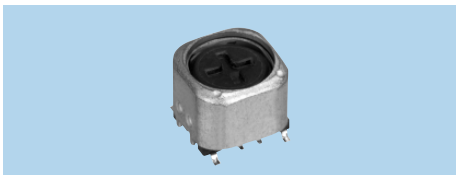


**Specifications**

- (1) 1~4mH
- (2) 40~100kHz
- (3) F:±2%  
L:±5%
- (4) -
- (5) Q:40~60



**K7-R**

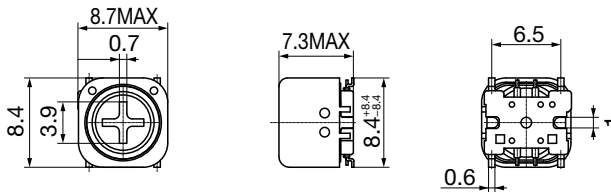


**Specifications**

- (1) 0.1~8.5mH
- (2) 10~100kHz
- (3) F:±2%  
L:±5%
- (4) -
- (5) Q:40~60

**Features**

- SMD
- Double shield case
- 400pcs./Reel



- (1) Inductance
- (2) Operational frequency
- (3) Variable range of F & L
- (4) Internal capacitance
- (5) Unloaded Q