

# Power Inductors CZ Series

## OUTLINE

Low-height, and high current power inductor used in digital devices and mobile phones. Several dimensions are available.



## FEATURES

1. Non-solder product by laser welding.
2. Impact-resistant structure with wider terminals.
3. High current performance.

## APPLICATIONS

For digital equipment (DSC, DVC, PDA) and mobile phones.

## SPECIFICATIONS

Type	Size (mm)	Height (mm)	Inductance (μH)	DC Resistance (mΩ)	Rated DC Current (A)	
					L=-10%	Δ T=25K
C3-Z1.2R	3.0×3.0	1.2max.	1.2~10	90~450	0.33~0.85	0.55~1.05
C3-Z1.5R		1.5max.	2.2~22	90~800	0.25~0.80	0.30~1.00
C3-Z1.8R		1.8max.	2.2~47	85~1,150	0.23~1.00	0.25~1.10

\* 3,000Pcs/Reel

## DATA LIST (C3-Z Series)

C3-Z1.2R (Height : 1.2mm max.)

Item	Stamp	Inductance			DCR (mΩ) typ.	DC Current (A)	
		(μH)	Tolerance (%)	Test Freq (kHz)		Inductance -10% typ.	Temp Δ25K typ.
DB	1R	1.2	±30	1kHz	90	0.85	1.05
DE	2R	2.2	±30	1kHz	130	0.70	0.90
DG	3R	3.3	±30	1kHz	160	0.60	0.82
DJ	4R	4.7	±30	1kHz	240	0.50	0.72
DK	5R	5.6	±30	1kHz	300	0.46	0.67
DL	6R	6.8	±30	1kHz	375	0.43	0.62
DM	8R	8.2	±30	1kHz	400	0.38	0.58
EA	10	10	±20	1kHz	450	0.33	0.55

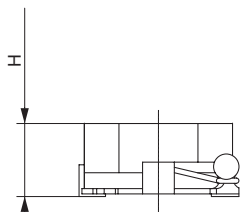
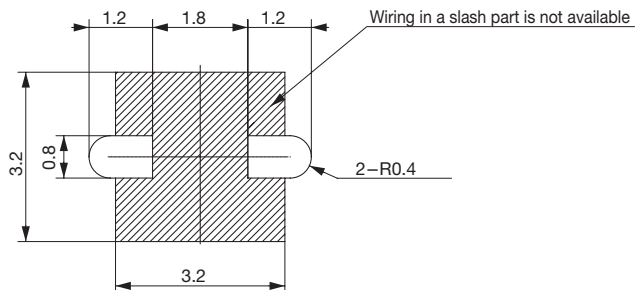
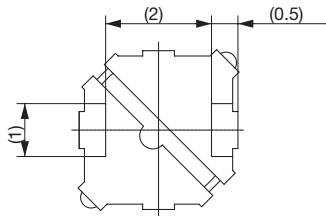
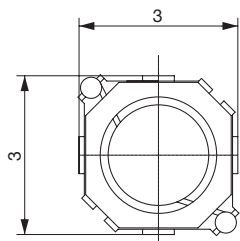
**C3-Z1.5R (Height : 1.5mm max.)**

Item	Stamp	Inductance			DCR (mΩ) typ.	DC Current (A)	
		(μH)	Tolerance (%)	Test Freq (kHz)		Inductance -10% typ.	Temp Δ25K typ.
DE	2R	2.2	±30	1kHz	90	0.90	1.00
DG	3R	3.3	±30	1kHz	140	0.70	0.90
DJ	4R	4.7	±30	1kHz	200	0.60	0.85
DK	5R	5.6	±30	1kHz	220	0.55	0.80
DL	6R	6.8	±30	1kHz	240	0.52	0.77
DM	8R	8.2	±30	1kHz	350	0.48	0.72
EA	10	10	±20	1kHz	400	0.45	0.70
EB	12	12	±20	1kHz	450	0.40	0.65
EC	15	15	±20	1kHz	600	0.35	0.50
ED	18	18	±20	1kHz	680	0.30	0.40
EE	22	22	±20	1kHz	800	0.25	0.30

**C3-Z1.8R (Height : 1.8mm max.)**

Item	Stamp	Inductance			DCR (mΩ) typ.	DC Current (A)	
		(μH)	Tolerance (%)	Test Freq (kHz)		Inductance -10% typ.	Temp Δ25K typ.
DE	2R	2.2	±30	1kHz	85	1.00	1.10
DG	3R	3.3	±30	1kHz	120	0.90	1.00
DJ	4R	4.7	±30	1kHz	170	0.75	0.90
DK	5R	5.6	±30	1kHz	195	0.70	0.85
DL	6R	6.8	±30	1kHz	210	0.65	0.82
DM	8R	8.2	±30	1kHz	265	0.55	0.78
EA	10	10	±20	1kHz	290	0.50	0.75
EB	12	12	±20	1kHz	420	0.48	0.65
EC	15	15	±20	1kHz	465	0.45	0.55
ED	18	18	±20	1kHz	550	0.40	0.50
EE	22	22	±20	1kHz	630	0.38	0.45
EF	27	27	±20	1kHz	770	0.33	0.40
EG	33	33	±20	1kHz	930	0.30	0.33
EH	39	39	±20	1kHz	1,050	0.25	0.28
EJ	47	47	±20	1kHz	1,150	0.23	0.25

**DIMENSIONS**



H C3-Z1.2R: 1.2max.  
 1.5R: 1.5max.  
 1.8R: 1.8max.

Recommended land pattern

Unit : mm  
 Tolerance : ±0.2