

Power Inductors CP Series

OUTLINE

Compacts, low-height, and high current power inductor used in digital devices and mobile phones. Several dimensions are available.



FEATURES

1. Low DCR by magnetically shielded structure with magnetic resin.
2. Impact-resistant structure with wider terminals.
3. Non-Solder products by laser welding.

APPLICATIONS

For DC-DC converter power supply of miniature portable devices (mobile phones, portable game equipment, DSC, DVC, PDA, etc.).

SPECIFICATIONS

Type	Size (mm)	H length (Unit : mm)	Inductance (μ H)	Rated Current (A)	DC Resistance (m Ω)	Pcs/Reel
C3-P1.0R	3.0×3.0	1.0max.	1.2~10	0.57~1.50	120~630	4,000
C3-P1.2R	3.0×3.0	1.2max.	1.2~47	0.26~1.50	55~1,300	3,000
C3-P1.2RA	3.0×3.0	1.2max.	1.0~18	0.52~2.00	65~750	3,000
C3-P1.5R	3.0×3.0	1.5max.	1.5~47	0.33~2.40	58~1,050	3,000
C4-P1.5R	4.0×4.0	1.5max.	1.0~47	0.35~2.85	45~850	3,000
C4-P1.8R	4.0×4.0	1.8max.	1.2~68	0.37~2.70	40~920	3,000

DATA LIST (C3-P Series)

C3-P1.0R (Height : 1.0mm max.)

Item	Stamp	(μH)	Inductance		DCR (mΩ) typ.	DC Current (A)
			Tolerance (%)	Test Freq (kHz)		Inductance -30% typ. A
DB	1R2	1.2	±30	1kHz	120	1.50
DE	2R0	2.0	±30	1kHz	160	1.20
DG	3R0	3.0	±30	1kHz	240	0.95
DJ	4R7	4.7	±30	1kHz	300	0.82
DK	5R6	5.6	±30	1kHz	350	0.75
DL	6R2	6.2	±30	1kHz	380	0.70
DM	8R2	8.2	±30	1kHz	550	0.60
EA	100	10	±20	1kHz	630	0.57

C3-P1.2R (Height : 1.2mm max.)

Item	Stamp	(μH)	Inductance		DCR (mΩ) typ.	DC Current (A)
			Tolerance (%)	Test Freq (kHz)		Inductance -30% typ. A
DB	1R2	1.2	±30	1kHz	55	1.50
DC	1R5	1.5	±30	1kHz	66	1.40
DD	1R8	1.8	±30	1kHz	76	1.30
DF	2R7	2.7	±30	1kHz	83	1.25
DG	3R3	3.3	±30	1kHz	105	1.00
DH	3R9	3.9	±30	1kHz	135	0.90
DJ	4R7	4.7	±30	1kHz	155	0.85
DK	5R6	5.6	±30	1kHz	170	0.80
DL	6R8	6.8	±30	1kHz	210	0.70
DM	8R2	8.2	±30	1kHz	245	0.60
EA	100	10	±20	1kHz	280	0.55
EB	120	12	±20	1kHz	400	0.50
EC	150	15	±20	1kHz	460	0.45
ED	180	18	±20	1kHz	620	0.42
EE	220	22	±20	1kHz	670	0.38
EF	270	27	±20	1kHz	750	0.35
EG	330	33	±20	1kHz	1,050	0.31
EH	390	39	±20	1kHz	1,200	0.28
EJ	470	47	±20	1kHz	1,300	0.26

DATA LIST (C3-P Series)

C3-P1.2RA (Height : 1.2mm max.)

Item	Stamp	(μH)	Inductance		DCR (mΩ) typ.	DC Current (A)
			Tolerance (%)	Test Freq (kHz)		Inductance -30% typ. A
DA	1R0	1.0	±30	1kHz	65	2.00
DC	1R5	1.5	±30	1kHz	85	1.70
DE	2R2	2.2	±30	1kHz	90	1.40
DF	2R7	2.7	±30	1kHz	125	1.35
DG	3R3	3.3	±30	1kHz	140	1.15
DH	3R9	3.9	±30	1kHz	165	1.10
DJ	4R7	4.7	±30	1kHz	180	1.00
DK	5R6	5.6	±30	1kHz	240	0.92
DL	6R8	6.8	±30	1kHz	250	0.85
EA	100	10	±20	1kHz	390	0.64
EB	120	12	±20	1kHz	470	0.60
EC	150	15	±20	1kHz	660	0.55
ED	180	18	±20	1kHz	750	0.52

C3-P1.5R (Height : 1.5mm max.)

Item	Stamp	(μH)	Inductance		DCR (mΩ) typ.	DC Current (A)
			Tolerance (%)	Test Freq (kHz)		Inductance -30% typ. A
DC	1R5	1.5	±30	1kHz	58	2.40
DD	1R8	1.8	±30	1kHz	65	2.20
DF	2R7	2.7	±30	1kHz	85	1.85
DG	3R3	3.3	±30	1kHz	115	1.65
DH	3R9	3.9	±30	1kHz	125	1.50
DJ	4R2	4.2	±30	1kHz	140	1.35
DK	5R3	5.3	±30	1kHz	150	1.20
DL	6R8	6.8	±30	1kHz	200	1.15
DM	8R2	8.2	±30	1kHz	210	0.85
EA	100	10	±20	1kHz	240	0.70
EB	120	12	±20	1kHz	280	0.63
EC	150	15	±20	1kHz	365	0.58
ED	180	18	±20	1kHz	410	0.55
EE	220	22	±20	1kHz	555	0.47
EF	270	27	±20	1kHz	620	0.45
EG	330	33	±20	1kHz	830	0.40
EH	390	39	±20	1kHz	940	0.35
EJ	470	47	±20	1kHz	1,050	0.33

DATA LIST (C4-P Series)

C4-P1.5R (Height : 1.5mm max.)

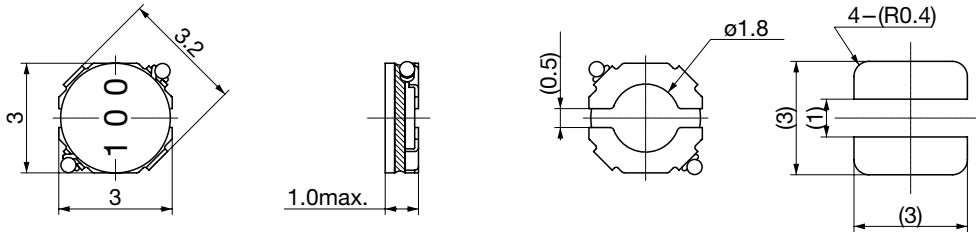
Item	Stamp	(μH)	Inductance		DCR (mΩ) typ.	DC Current (A)
			Tolerance (%)	Test Freq (kHz)		Inductance -30% typ. A
DA	1R0	1.0	±30	1kHz	45	2.85
DB	1R2	1.2	±30	1kHz	55	2.50
DD	1R8	1.8	±30	1kHz	65	2.20
DE	2R2	2.2	±30	1kHz	70	1.85
DG	3R3	3.3	±30	1kHz	80	1.75
DH	3R9	3.9	±30	1kHz	90	1.60
DJ	4R7	4.7	±30	1kHz	100	1.35
DK	5R6	5.6	±30	1kHz	130	1.20
DL	6R8	6.8	±30	1kHz	155	1.10
DM	8R2	8.2	±30	1kHz	170	1.00
EA	100	10	±20	1kHz	185	0.95
EB	120	12	±20	1kHz	265	0.80
EC	150	15	±20	1kHz	300	0.75
ED	180	18	±20	1kHz	330	0.50
EE	220	22	±20	1kHz	355	0.48
EF	270	27	±20	1kHz	465	0.45
EG	330	33	±20	1kHz	550	0.40
EH	390	39	±20	1kHz	710	0.38
EJ	470	47	±20	1kHz	850	0.35

C4-P1.8R (Height : 1.8mm max.)

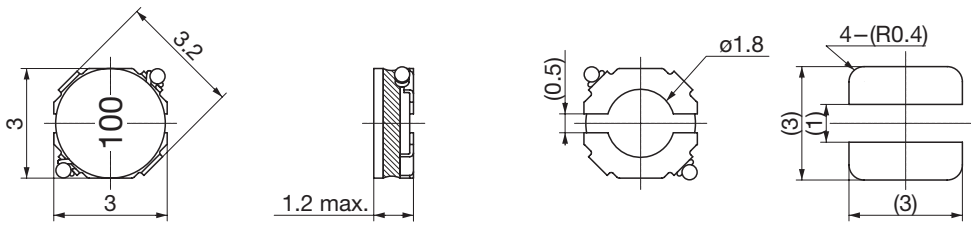
Item	Stamp	(μH)	Inductance		DCR (mΩ) typ.	DC Current (A)
			Tolerance (%)	Test Freq (kHz)		Inductance -30% typ. A
DB	1R2	1.2	±30	1kHz	40	2.70
DC	1R5	1.5	±30	1kHz	45	2.20
DD	1R8	1.8	±30	1kHz	50	2.00
DF	2R7	2.7	±30	1kHz	55	1.70
DG	3R3	3.3	±30	1kHz	65	1.60
DH	3R9	3.9	±30	1kHz	70	1.50
DJ	4R7	4.7	±30	1kHz	80	1.40
DK	5R6	5.6	±30	1kHz	85	1.25
DL	6R8	6.8	±30	1kHz	125	1.20
DM	8R2	8.2	±30	1kHz	135	1.10
EA	100	10	±20	1kHz	155	0.95
EB	120	12	±20	1kHz	185	0.90
EC	150	15	±20	1kHz	250	0.80
ED	180	18	±20	1kHz	300	0.70
EE	220	22	±20	1kHz	360	0.65
EF	270	27	±20	1kHz	395	0.60
EG	330	33	±20	1kHz	485	0.50
EH	390	39	±20	1kHz	540	0.45
EJ	470	47	±20	1kHz	630	0.43
EK	560	56	±20	1kHz	780	0.40
EL	680	68	±20	1kHz	920	0.37

DIMENSIONS

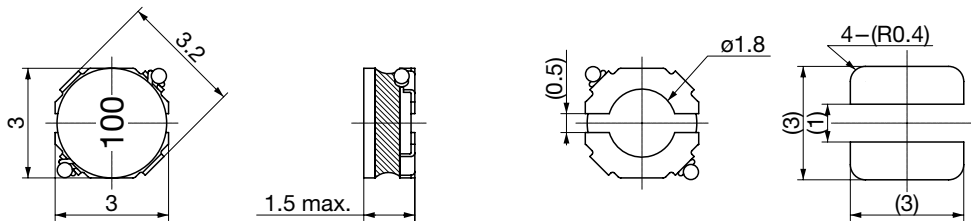
C3-P1.0R



C3-P1.2R



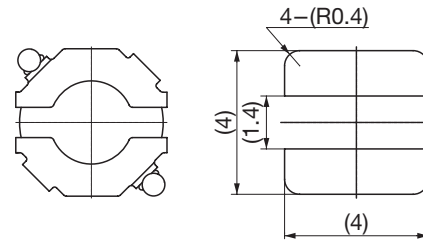
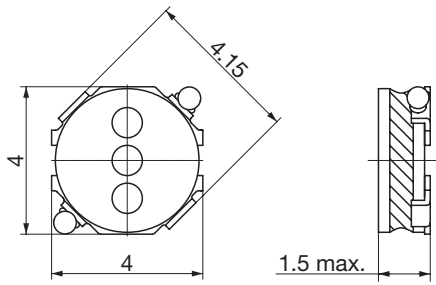
C3-P1.5R



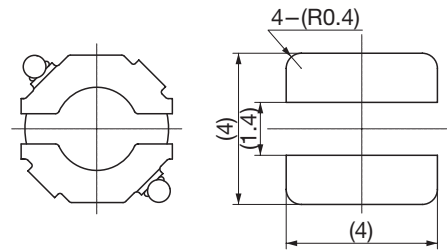
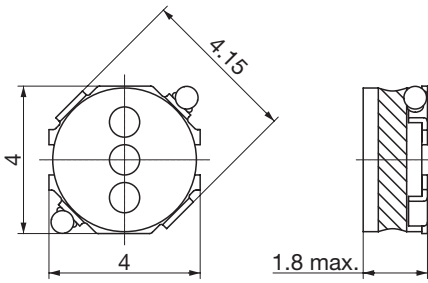
Recommended land patterns

Unit : mm
Tolerance : ± 0.2

C4-P1.5R



C4-P1.8R



Recommended land patterns

Unit : mm

Tolerance : ± 0.2