

# Power Inductors C3-Z Series

## OUTLINE

Low profile [1.2mm~height] and high current of choke coil have been lined up for digital equipment and hand phone of new generation.



## FEATURES

1. Lead free product.
2. New designed structure for impact proof.
3. New designed structure for high current proof.
4. New designed terminal for low cost.
5. Small package from suitable structure using simulation.

## USES

Use in digital equipment(DSC, DVC, PDA) and hand phone of new generation.

## SPECIFICATIONS

Type	Size (mm)	Height (mm)	Inductance (μH)	DC Resistance (mΩ)	Rated DC Current (A)	
					L=-10%	△ T=25K
C3-Z1.2R	3.0×3.0	1.2max.	1.2~10	90~450	0.33~0.85	0.55~1.05
C3-Z1.5R		1.5max.	2.2~22	90~800	0.25~0.80	0.30~1.00
C3-Z1.8R		1.8max.	3.3~47	120~1150	0.23~0.90	0.25~1.00

\* 3000Pcs/Reel

## DATA LIST (C3-Z1.2R Series)

C3-Z1.2R (Height : 1.2mm max.)

Item	Stamp	Inductance			SRF (MHz) min.	DCR (mΩ) typ.	DC Current (A)	
		(μH)	Tolerance (%)	Test Freq (kHz)			Inductance -10% typ.	Temp △25K typ.
DB	1R	1.2	±30	1kHz	-	90	0.85	1.05
DE	2R	2.2	±30	1kHz	-	130	0.70	0.90
DG	3R	3.3	±30	1kHz	-	160	0.60	0.82
DJ	4R	4.7	±30	1kHz	-	240	0.50	0.72
DK	5R	5.6	±30	1kHz	-	300	0.46	0.67
DL	6R	6.8	±30	1kHz	-	375	0.43	0.62
DM	8R	8.2	±30	1kHz	-	400	0.38	0.58
EA	10	10	±20	1kHz	-	450	0.33	0.55

## DATA LIST (C3-Z1.5R Series)

C3-Z1.5R (Height : 1.5mm max.)

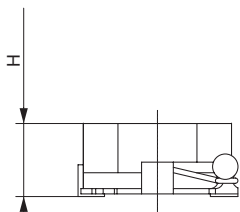
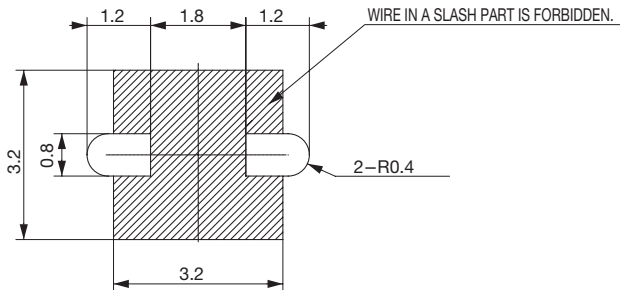
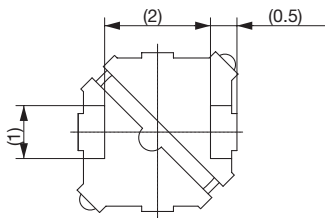
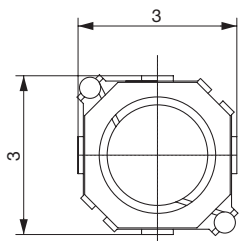
Item	Stamp	Inductance			SRF (MHz) min.	DCR (mΩ) typ.	DC Current (A)	
		(μH)	Tolerance (%)	Test Freq (kHz)			Inductance -10% typ.	Temp Δ25K typ.
DE	2R	2.2	±30	1kHz	-	90	0.90	1.00
DG	3R	3.3	±30	1kHz	-	140	0.70	0.90
DJ	4R	4.7	±30	1kHz	-	200	0.60	0.85
DK	5R	5.6	±30	1kHz	-	220	0.55	0.80
DL	6R	6.8	±30	1kHz	-	240	0.52	0.77
DM	8R	8.2	±30	1kHz	-	350	0.48	0.72
EA	10	10	±20	1kHz	-	400	0.45	0.70
EB	12	12	±20	1kHz	-	450	0.40	0.65
EC	15	15	±20	1kHz	-	600	0.35	0.50
ED	18	18	±20	1kHz	-	680	0.30	0.40
EE	22	22	±20	1kHz	-	800	0.25	0.30

## DATA LIST (C3-Z1.8R Series)

C3-Z1.8R (Height : 1.8mm max.)

Item	Stamp	Inductance			SRF (MHz) min.	DCR (mΩ) typ.	DC Current (A)	
		(μH)	Tolerance (%)	Test Freq (kHz)			Inductance -10% typ.	Temp Δ25K typ.
DG	3R	3.3	±30	1kHz	-	120	0.90	1.00
DJ	4R	4.7	±30	1kHz	-	170	0.75	0.90
DK	5R	5.6	±30	1kHz	-	195	0.70	0.85
DL	6R	6.8	±30	1kHz	-	210	0.65	0.82
DM	8R	8.2	±30	1kHz	-	265	0.55	0.78
EA	10	10	±20	1kHz	-	290	0.50	0.75
EB	12	12	±20	1kHz	-	420	0.48	0.65
EC	15	15	±20	1kHz	-	465	0.45	0.55
ED	18	18	±20	1kHz	-	550	0.40	0.50
EE	22	22	±20	1kHz	-	630	0.38	0.45
EF	27	27	±20	1kHz	-	770	0.33	0.40
EG	33	33	±20	1kHz	-	930	0.30	0.33
EH	39	39	±20	1kHz	-	1050	0.25	0.28
EJ	47	47	±20	1kHz	-	1150	0.23	0.25

**DIMENSIONS**



H C3-Z1.2R: 1.2max.  
 1.5R: 1.5max.  
 1.8R: 1.8max.

Recommended land pattern  
dimensions of PWB(10/1)  
 (General tolerance  $\pm 0.1$ )

Unit : mm  
 Tolerance :  $\pm 0.2$