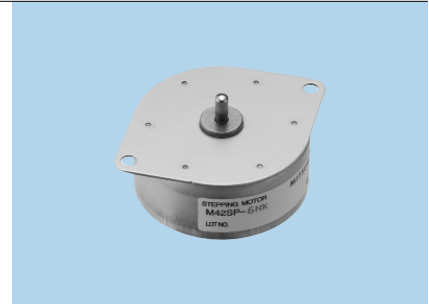


# M42SP-6K

## FEATURES

1. High response.
2. High-output torque.
3. Superior running quietness and stability.



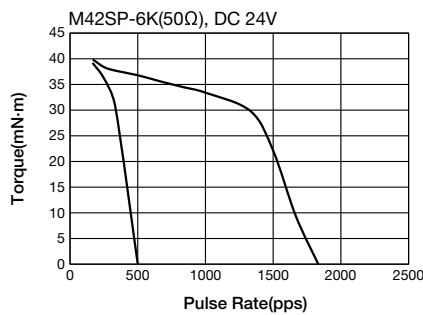
## USES

Printers, multifunction machines, copy machines, FAX, etc.

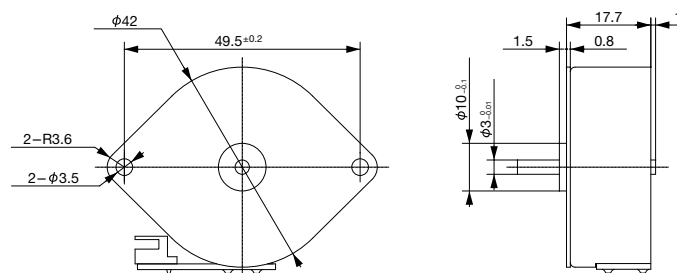
## SPECIFICATIONS

Item	M42SP-6K
Rated Voltage	DC 24V
Working Voltage	DC 21.6~26.4V
Rated Current/Phase	550mA(PEAK)
Coil DC Resistance	8Ω/phase±10%
Step Angle	7.5°/step
Drive Method	Constant Current
Excitation Method	2-2 Phase excitation (Bipolar driving)
Insulation Class	Class E insulation
Holding Torque	47.1mN·m
Pull-out Torque	33.4mN·m/1,200pps
Pull-in Torque	39.2mN·m/200pps
Max. Pull-out Pulse Rate	2,200pps
Max. Pull-in Pulse Rate	560pps

## CHARACTERISTICS



## DIMENSIONS



Unit : mm  
General tolerance : ±0.5

• Any products mentioned in this catalog are subject to any modification in their appearance and others for improvements without prior notification.  
• The details listed here are not a guarantee of the individual products at the time of ordering. When using the products, you will be asked to check their specifications.