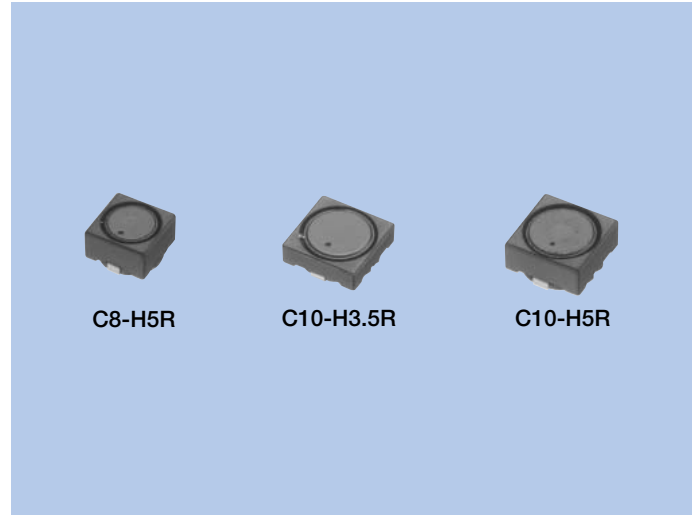


Power Inductors CH Series

OUTLINE

Low DCR and high current power inductor used in notebook computer and amusement equipment.



FEATURES

1. Low DCR by flat wire
2. Suitable for high current

SPECIFICATIONS

Type	Size (mm)	H length (Unit : mm)	Inductance (μH)	Operational Frequency (KHz)	Rated Current (A)	DC Resistance (mΩ)	Pcs/Reel
C8-H5R	8×8	5.0	1.6~9.1	10~500	3.5~8.0	8~23	500
C10-H3.5R	10×10	3.5	1.5~10	10~500	3.8~8.0	9.0~45	800
C10-H5R	10×10	5.0	1.8~10	10~500	4.8~9.0	5.2~20	500

APPLICATIONS

For DC-DC converter power supply in notebook/ desktop computer and amusement equipment

DATA LIST (C8-H Series)

C8-H5R

Distinctive Name	Marking	Inductance		DC Resistance	Rated Current*	
		(μH)	Tolerance (%)	(mΩ)	(A)	
				typ.	L-10% typ.	Δt 40K typ.
DC	1R6	1.6	±30	8	8.0	8.6
DF	2R4	2.4	±30	10	6.5	8.2
DH	3R6	3.6	±30	11	6.0	7.3
DJ	4R3	4.3	±30	13	5.5	6.0
DK	5R6	5.6	±30	16	4.5	5.5
DL	6R8	6.8	±30	21	3.7	5.1
EA	9R1	9.1	±30	23	3.5	4.8

• Any products mentioned in this catalog are subject to any modification in their appearance and others for improvements without prior notification.
 • The details listed here are not a guarantee of the individual products at the time of ordering. When using the products, you will be asked to check their specifications.

DATA LIST (C10-H Series)

C10-H3.5R

Distinctive Name	Marking	Inductance		DC Resistance	Rated Current*	
		(μH)	Tolerance (%)	(mΩ)	(A)	
				typ.	L-10% typ.	Δt 40K typ.
DC	1R5	1.5	±30	9.0	8.0	8.2
DE	2R2	2.2	±30	11.2	7.5	8.0
DG	3R3	3.3	±30	14.4	5.7	6.3
DJ	4R7	4.7	±30	25.0	5.3	5.9
DK	5R6	5.6	±30	36.0	5.0	5.8
DL	7R3	7.3	±30	34.0	4.6	5.7
DM	8R9	8.9	±30	38.0	4.5	5.5
EA	100	10.0	±20	45.0	3.8	5.0

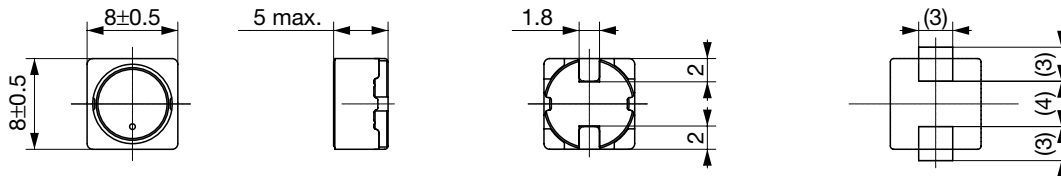
C10-H5R

Distinctive Name	Marking	Inductance		DC Resistance	Rated Current*	
		(μH)	Tolerance (%)	(mΩ)	(A)	
				typ.	L-10% typ.	Δt 40K typ.
DD	1R8	1.8	±30	5.2	9.0	9.0
DF	2R7	2.7	±30	7.0	8.5	8.5
DG	3R3	3.3	±30	9.2	7.5	7.5
DJ	4R7	4.7	±30	11.0	6.5	6.5
DL	6R8	6.8	±30	17.0	5.5	6.0
DM	8R2	8.2	±30	19.0	5.0	5.5
EA	100	10.0	±20	20.0	4.8	5.0

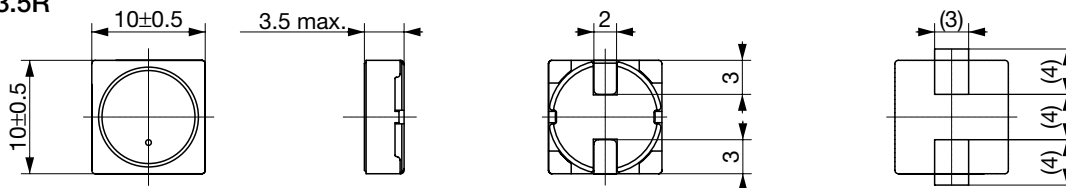
• Any products mentioned in this catalog are subject to any modification in their appearance and others for improvements without prior notification.
 • The details listed here are not a guarantee of the individual products at the time of ordering. When using the products, you will be asked to check their specifications.

DIMENSIONS

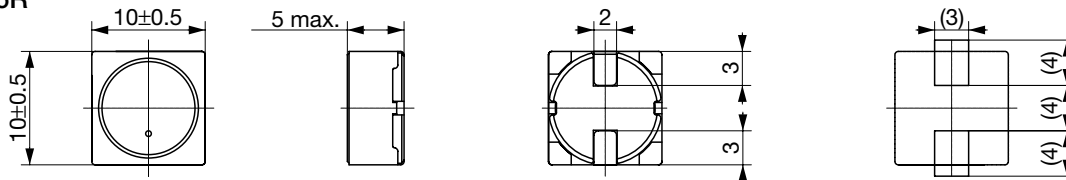
C8-H5R



C10-H3.5R



C10-H5R



Recommended land patterns

Unit : mm

• Any products mentioned in this catalog are subject to any modification in their appearance and others for improvements without prior notification.
 • The details listed here are not a guarantee of the individual products at the time of ordering. When using the products, you will be asked to check their specifications.