

MITSUMI



MITSUMI ELECTRIC CO., LTD.
CSR REPORT

2008

MITSUMI Electric Group
Corporate Social Responsibility
Report

Editorial Policy

On Publishing the MITSUMI Electric Group CSR Report 2008

This report introduces to stakeholders the various projects for CSR (Corporate Social Responsibility) of the MITSUMI Electric Group. It has been created to further strengthen ties of trust with your all. MITSUMI has its Corporate Mission (Beautiful Friendship, Beautiful Products, Beautiful Business) and its Business Philosophy (contributing to people's needs around the world with superior electronic parts) as the basis for promotion of CSR activities. We have positioned those CSR activities as the second wheel of the cart together with our business operations. Our goal is to gain the trust of all stakeholders while performing our responsibility toward society, the environment and our planet.

This report provides information on main aspects of MITSUMI's CSR activities and future plans while including the contents of the Environmental Action Report that we have been releasing every year since 2004.

MITSUMI plans ongoing CSR activities in the future as it improves those activities in an all-out effort by the entire MITSUMI Group. We hope this report will aid understanding of MITSUMI's CSR activities while promoting understanding together with all our stakeholders. We are grateful for your opinions and suggestions.

■ Report target period

Prepared with Fiscal 2007 (April 1, 2007 to March 21, 2008) as the central focus.

■ Report target organization

MITSUMI Electric Group
(MITSUMI Electric Co., Ltd. and 15 business division and affiliated companies in Japan and overseas)

■ Information on web

<http://www.mitsumi.co.jp/>

■ Contact address

Head Office General Affairs Dept. CSR Promotion
Committee Office
TEL: +81-042-310-5160
FAX: +81-042-310-5168

■ Contents

Editorial Policy	2
MITSUMI Electric Company Profile	3

Corporate Message

Top Message	4
Corporate Mission, Business Philosophy	6
Management Policy, Business Segments	7
Consolidated Financial Highlights	8

CSR Management

Corporate Governance	10
Compliance	11
MITSUMI Code of Conduct	12
Risk Management	13
Customers and MITSUMI	14
Suppliers and MITSUMI	15
Shareholders, Investors and MITSUMI	16
Local Communities and MITSUMI	17
Employees and MITSUMI	18

Environmental Report

Environmental Policy	20
Environmental Management Systems	21
Status of ISO14001 Certificate/ Environmental Audit	22
Obtaining ISO/IEC17025 Laboratory Accreditation	23
Environmental Education/ Mid-Term Targets and Achievement	24
Environmental Accounting	25
Outline of the Environmental Loads in Fiscal 2007	26
Product Development Activities that Consider the Environment	27
Chemical Substances Management	28
Reduction of Environmental Loads	30
Environmental Communication	33
Environmental Protection Activities at Overseas Factories	34
Site Data	36

MITSUMI World Network

MITSUMI's Worldwide Network	38
-----------------------------------	----

MITSUMI Electric Company Profile

Since its founding in 1954, MITSUMI Electric has continued to develop as a comprehensive electronic parts manufacturer pursuing its own unique technologies. Our main themes are supplying the ideal electronic parts to meet market needs while carving out new electronics fields with our unique “proposal-type” electronic parts. We will continue to make a major contribution to development of the electronics field in the present and in days to come.

Future plans call for further amassing the combined technical strengths of the MITSUMI Group to create new enterprises in growth fields while actively introducing unique products to the market.

Basic Company Information (as of March 31, 2008)

Company name MITSUMI ELECTRIC CO., LTD.
 Establishment January, 1954
 Address Head Office: 2-11-2, Tsurumaki, Tama-shi, Tokyo, 206-8567 JAPAN
 TEL: +81-042-310-5333 FAX: +81-042-310-5168
 Capital 39.89025794 billion yen
 Representative Shigeru Moribe, President and CEO
 Number of employees Consolidated: 44,295
 Sales Consolidated: 301.944 billion yen
 March 2008 annual report



External view of Head Office



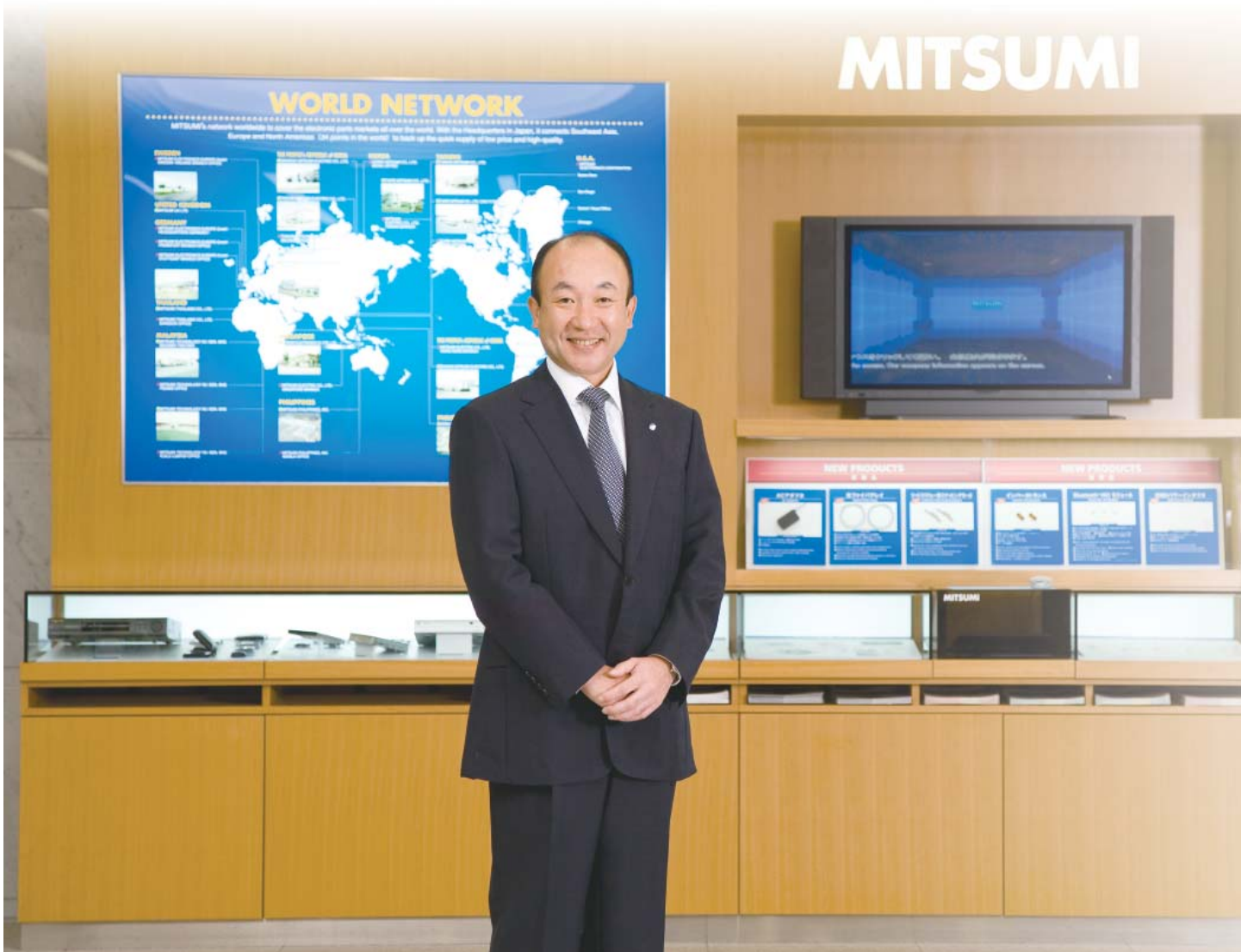
Top Message

Creating unique technologies to achieve sustainable development of industry while contributing to the future of society, the environment and all stakeholders.

With Principles, Values and Responsibility as the Pillars of Operations

As a comprehensive electronic parts manufacturer, MITSUMI finds its Business Philosophy in “contributing to the world’s people through electronic parts.” This is the basis for development and production of a large variety of electronic parts. We draw on a full line of individual technologies, the result of years of experience, to supply a vast array of outstanding electronic parts featuring the latest technology and unique MITSUMI’s solutions. These make it possible to improve the performance of a whole host of electronic devices while develop new products in contributing to better lives for us all.

In endeavoring to realize our Business Philosophy, we strive to improve product competitiveness while improving growth potential and profitability so as to maximize our corporate worth. We are working on the accomplishment of the responsibility conscious enough of all employee social responsibility of corporation, acting as a united group to carry out that responsibility. In addition to shareholders and investors, our goal is to achieve major satisfaction for customers, suppliers and the local community. With this in mind we have established our Business Philosophy, corporate worth and social responsibility as our three main business activities.



Achieving a Harmonization of the Environment and Technology

Caring for the environment could be said to be the major mission for all enterprises in the 21st century. MITSUMI is actively engaged in its daily business activities in environmental protection operations: Reducing disposal of waste and greenhouse gases, decreasing consumption of electric power and water, effective use of resources.

In product development and production, preventing introduction of harmful chemical substances to products is in response to strict environmental restrictions such as the RoHS directive and the REACH regulations in the EU.

By developing newest products featuring reduced electric power use as well as unique products achieving a reduction in power use in electronics equipment we are able to clear the energy-saving restrictions in the West and elsewhere.

As a corporation active on the worldwide market, MITSUMI is intently aware of latest global trends for environmental protection, acting speedily to strengthen its own restrictions. With a harmonization of the environment and technology as our foremost goal, we want to continue to win a trust of customers around the world.

The Enhancement of Corporate Governance

MITSUMI has established Corporate Governance as a major pillar of its operations and is now actively engaged in strengthening Corporate Governance. Internal Control, in particular, is crucial for improving efficiency and speed in operations and a major topic in achieving transparency and sound business operations. With this in mind, we have established a special committee to create internal control systems. What's more, we are beefing up our business auditing functions to further improve Corporate Governance.

MITSUMI believes that its corporate activities should be instrumental in achieving its corporate social responsibility (CSR). With this in mind, we are endeavoring to achieve sustainable development as an enterprise to reach even higher ratings from all stakeholders as we make group-wide efforts to achieve those goals.

We hope this report will help you better understand MITSUMI's CSR activities. We welcome your continued support.

President and CEO *Shigeru Moribe*



Corporate Mission, Business Philosophy

Corporate Mission

Beautiful Friendship

Beautiful Products

Beautiful Business

The forerunner of MITSUMI Electric was “Mitsumi Denki Seisakusho”, which started business in 1954. The name “MITSUMI” means “Three Beauties” and refers to the three beauty ideals of “Beautiful Friendship”, “Beautiful Products” and “Beautiful Business”. These have become the corporate mission of the modern MITSUMI. The word “Beautiful” also connects up with such ideals as purity, uprightness and honesty, while at the same time indicating such ideals as protecting the environment and achieving ideal collaboration with our stakeholders. A spirit of defending these three beauties is found in every aspect of our CSR activities.

Business Philosophy

MITSUMI continues relentless growth and development as a global enterprise and a comprehensive electronic parts manufacturer to contribute to people’s needs around the world with superior electronic parts.

Contributing to the development of electronics, improving the lives of the world’s people and making a contribution to happiness: These have been Business Philosophy since our founding. Thanks to many technical innovations, the electronics environment continues major changes. Nevertheless, the Business Philosophy is proclaimed here do not change and will remain the foundation for MITSUMI’s corporate operations.

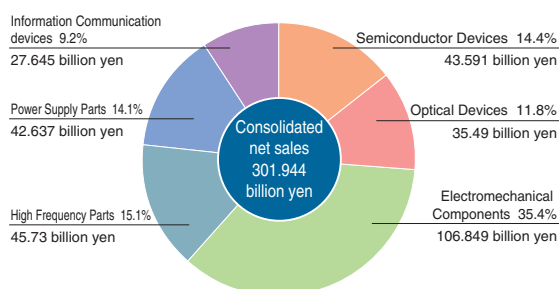
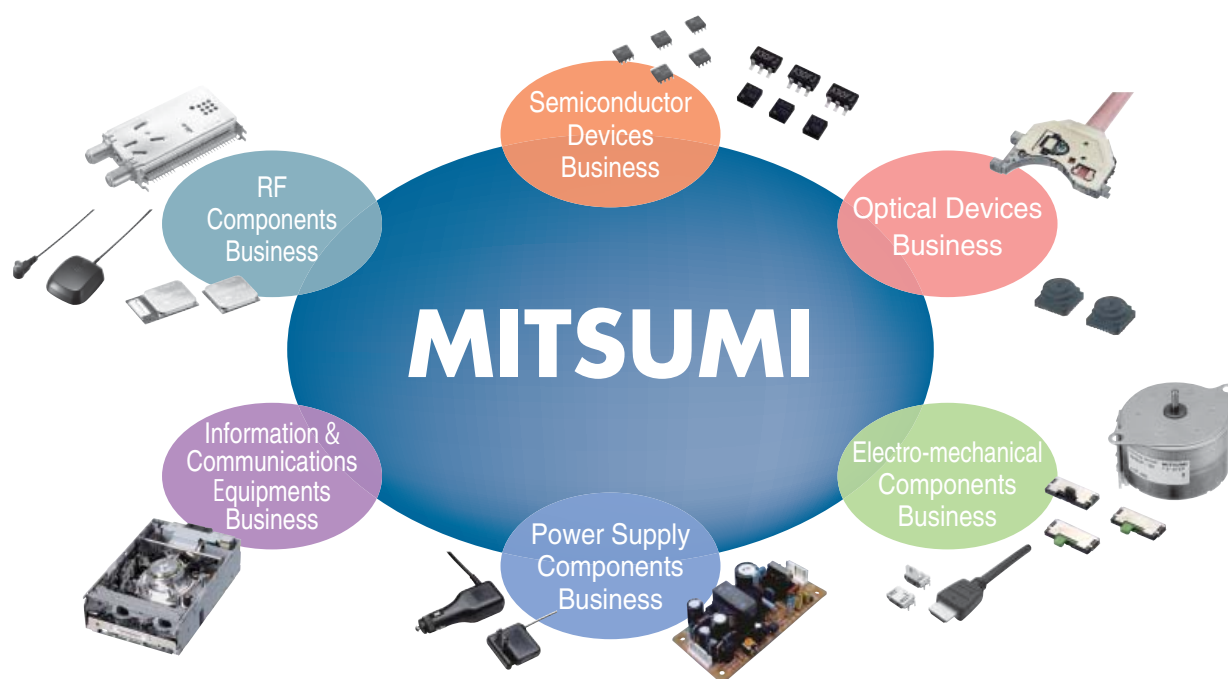
Management Policy, Business Segments

Increasing the synergy effect between products and operations to further increase our total strengths as a group.

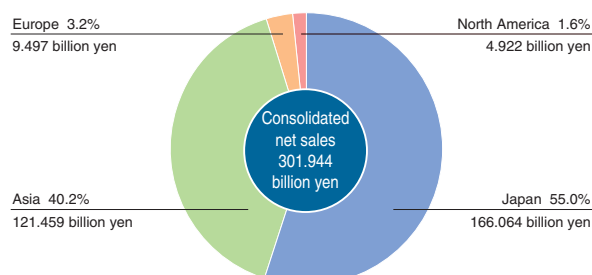
Aiming for sustainable growth and greater corporate worth.

With the global advance of digitalization and the rapid economic growth of the developing nations, major growth is anticipated in the field of digital AV equipment and network related devices, etc. MITSUMI has heavily invested in corporate resources and technical resources for products for digital terrestrial broadcasting, wireless communication equipment and optical networks as well as products for amusement equipment and the automotive industry. We've created a synergy effect between products and operations to further increase the consolidated strengths of the MITSUMI Group for speedy and timely supply of highly competitive high value-added products.

Delving deeply for individual technologies, we've increased our R&D strengths and ability to create new things. And thanks to tie-ups and cooperative projects with domestic and overseas enterprises we've developed new products and introduced new technologies. These strategies help us to aim for sustainable growth and an ongoing increase in our corporate worth.



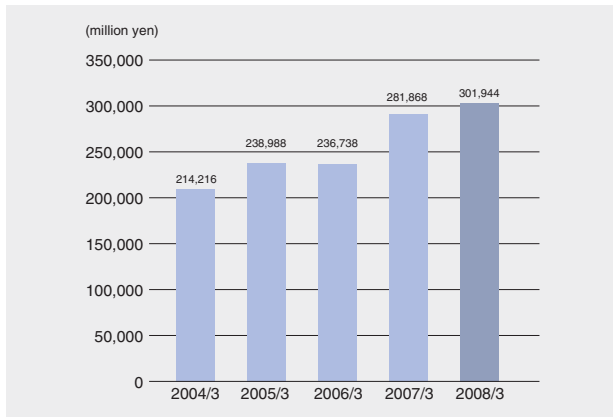
Composition of sales by business segment (consolidated in March, 2008)



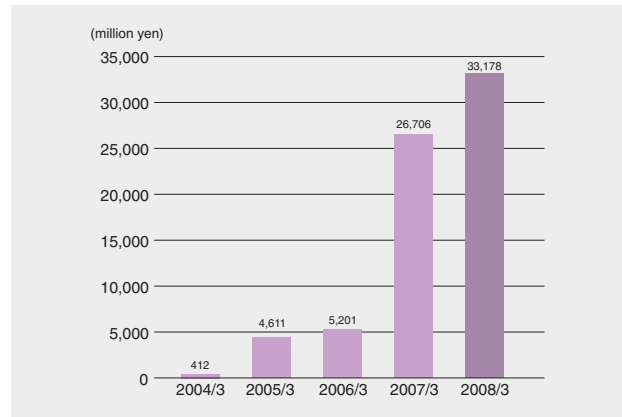
Composition of sales by region (consolidated in March, 2008)

Consolidated Financial Highlights

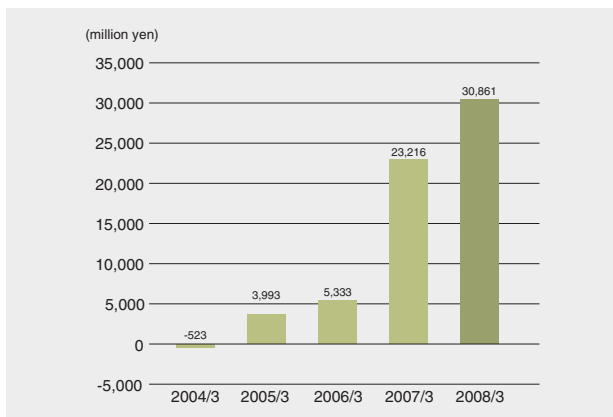
Net sales



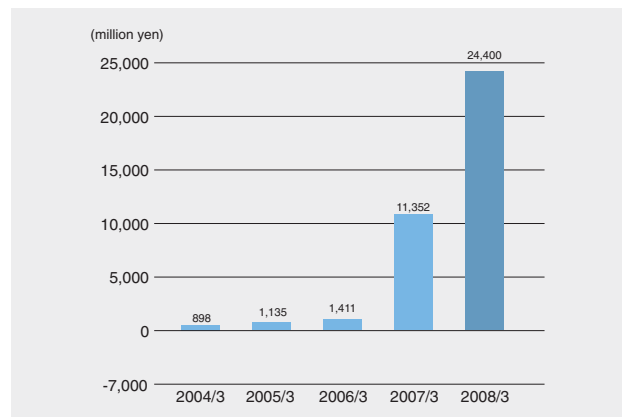
Operating income



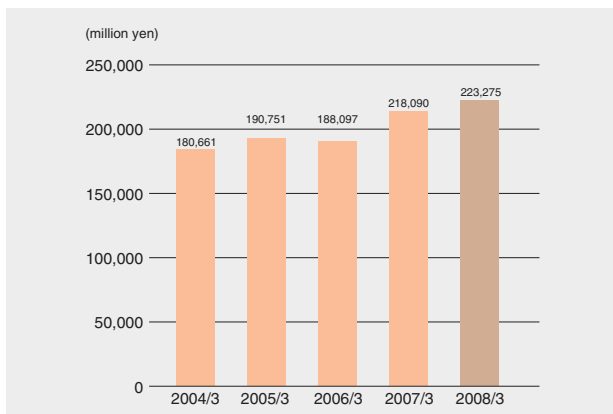
Current profits



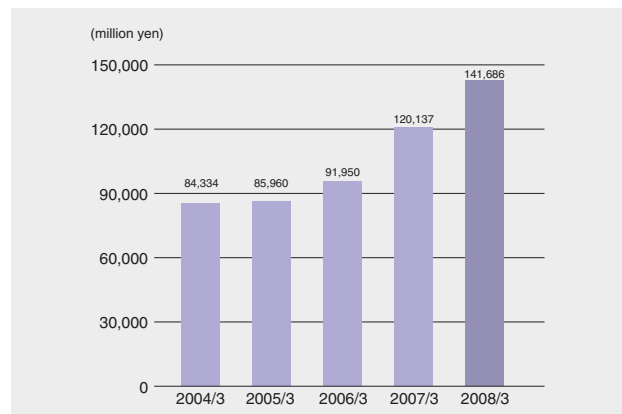
Net income



Total assets



Equity



Corporate Social Responsibility Report

Enhancing Corporate Governance and Stakeholder Value

CSR Report, Contents

Corporate Governance	10
Compliance	11
MITSUMI Code of Conduct	12
Risk Management	13
Customers and MITSUMI	14
Suppliers and MITSUMI	15
Shareholders, Investors and MITSUMI	16
Local Communities and MITSUMI	17
Employees and MITSUMI	18

Corporate Governance

Strengthening corporate governance to speed up business operations and promote efficiency while securing better corporate soundness and transparency, and increasing shareholder worth.

MITSUMI has established Corporate Governance in its globalizing group operations so as to speed up the decision making process, achieve better efficiency and secure corporate soundness and transparency. By further clarifying the functions and rights of our board of directors, we want to realize further unity between top management and our production and sales bases around the world, thus achieving an expansion of business operations on a global level.

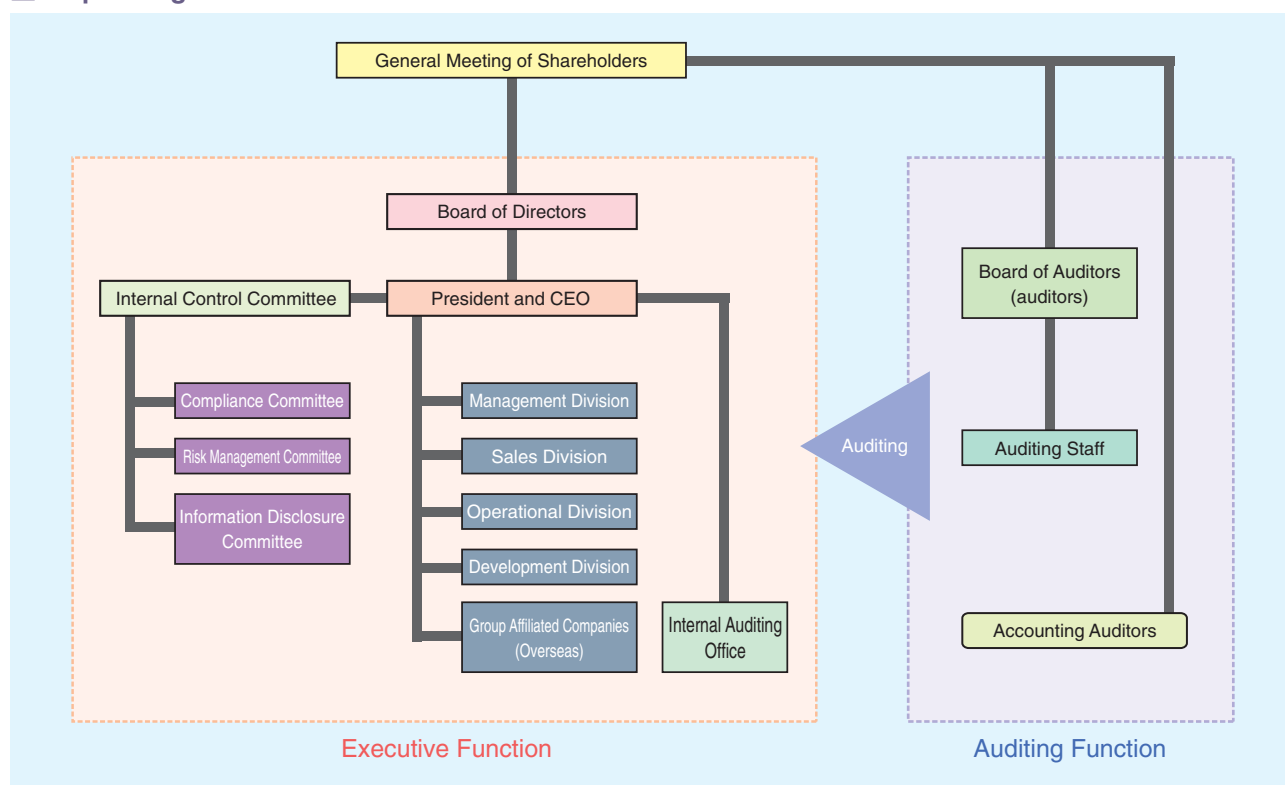
To gain the trust of all stakeholders, including shareholders and investors, we have established the following basic directives in promoting construction of an internal control system for the entire MITSUMI Group.

Basic Directives for Construction of an Internal Control System

At the meeting of the board of directors on May 11, 2006, MITSUMI decided on basic directives for construction of an internal control system. Our company officers, directors of business units and responsible persons at related companies were selected as members of an Internal Control Committee in order to promote construction of the best internal control systems for MITSUMI and related companies.

Compliance systems, risk management systems and information disclosure control systems are recognized as important elements in constructing an internal control system. With this in mind, we have established a Compliance Committee, Risk Management Committee and Information Disclosure Management Committee as sub-organizations of the Internal Control Committee, with membership composed of the applicable officers and persons in charge. We have also created and set into operation the management systems for these new committees.

Corporate governance structure



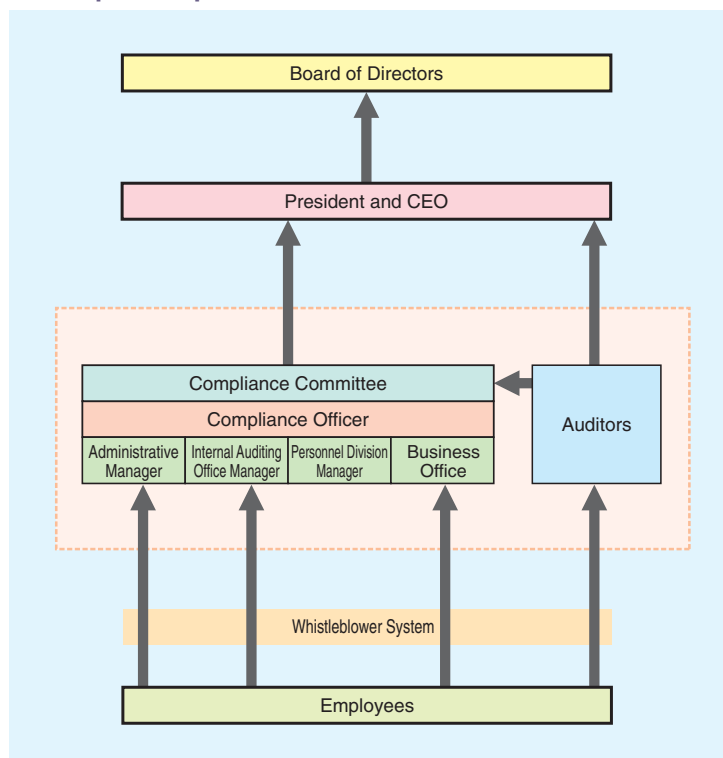
Compliance Promotion Structure

Performing its corporate social responsibility and observing laws and ethical principles are major themes on which the continued existence and development of an enterprise depend. Aware of this, MITSUMI is now creating Compliance Systems.

At present, a Compliance Committee has been organized by company officers responsible for compliance, the General Affairs Division (Legal Affairs Group) and the Internal Auditing Office, etc. This committee works to achieve superior regulations on division of operations, administrative authority and compliance, etc. This in turn results in systems for carrying out operations in accordance with in-house procedures.

Likewise, in order to quickly detect and correct action that is a violation of laws, our articles of incorporation and in-house requirements, we have established a whistleblower system and are endeavoring to protect information disclosers. In addition, the Internal Auditing Office conducts audits to insure that laws, articles of incorporation and in-house requirements are observed and that in-house operations are being carried out. These various policies and the in-house enlightening activities on many occasions are used to instill an awareness of compliance among all employees of the entire group so that all officers and employees will have high ethical standards and carry out fair and just corporate activities.

Compliance promotion structure



Whistleblower System

In response to questions and requests for advice regarding compliance, there is now a whistleblower system that receives inquiries and monitors information about violations and unlawful activities. We also make every effort to protect information disclosers.

Basic Philosophy on Antisocial Forces and Situation for Defense

In May 8, 2008, MITSUMI revised some of our basic objectives regarding construction of an Internal Control System, which were then released regarding our basic thinking concerning prevention of damage by antisocial forces.

MITSUMI constantly maintains a crisis-management awareness regarding antisocial forces posing a threat to social order and public safety. We will not yield to the unlawful demands of such forces and groups but maintain a thoroughgoing policy of having nothing to do with such groups. With this in mind, we work in collaboration with the police authorities and external professional organizations such as attorneys to gather information and promote a strengthening of in-house systems.

MITSUMI Code of Conduct

As mentioned above, MITSUMI's Business Philosophy is "contributing to the world's people through electronic parts." In implementing those ideals, it goes without saying that observing laws and ethics are a basic principle. It is thus a prerequisite that all employees of MITSUMI maintain high ethical principles so as to carry out fair and honest corporate operations.

With this in mind, MITSUMI has established the MITSUMI Code of Conduct to be observed by all employees and as a single enterprise. In order to achieve our corporate mission (Beautiful Friendship, Beautiful Products, Beautiful Business), all MITSUMI employees must observe the MITSUMI Code of Conduct while also always observing laws and company regulations, using these as guides for carrying out their work on a daily basis. Carefully observing laws and corporate ethics in addition to upstanding work based on company rules and the dictates of conscience is the best way to gain the trust of all stakeholders and society at large. This also ties up with sustainable development of our enterprise and an increase in our corporate worth.



MITSUMI Code of Conduct Booklet

- Japanese version
- English version
- Chinese version, simplified characters
- Chinese version, standard characters
- Malaysian version

MITSUMI Code of Conduct (Items)

Created and promulgated on April 1, 2005

■ Applicable Companies

- MITSUMI ELECTRIC Co., LTD.
- Member companies of MITSUMI Electric Group

■ Applicable Targets

- Officers and employees
- Officers and employees of related companies in Japan and abroad
- Applies to dispatched employees, part-timers and temporary workers except for section related to labor conditions

■ Code Items

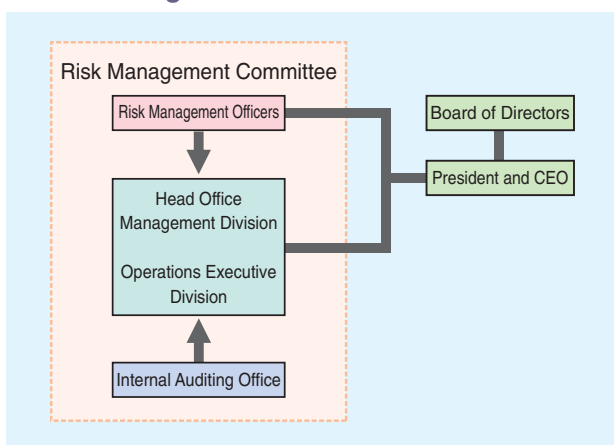
- MITSUMI Code of Conduct
- Purpose
- Scope
- Duty to Report
- Disciplinary Action
- Complying with Corporate Rules and Regulations
- In-House Relationship
 - Respect of Human Rights
 - Political and/or Religious Activities
- Relationship with Society
 - Corporate Social Responsibility
 - Social Contribution
 - Stakeholder's Profits
 - Detachment from Anti-Social Movements
 - Environmental Protection
- Relationship with Business Partner
 - Customer First Business Attitude
 - Entertainment and Gifts
- Relationship Between Stakeholder and Investor
 - Disclosure of Information
 - Prohibition of Insider Trading/Transaction
- Management of Corporate Assets, Property and Information
 - Protection of Corporate Assets/Property
 - Protection of Intelligent Property Rights
 - Management of Corporate Information
 - Protection of Personal Information

Risk Management

In conducting stable operations, MITSUMI is aware of the importance of preventing risks from occurring and, in the event that risks occur, implementing risk management activities to carry out speedy and appropriate responses.

We have created a Basic Risk Management Regulations to determine the contents of risk management activities and have also created a Risk Management Committee to coordinate those activities. Concrete activities include extraction of possible risks in conducting corporate activities for priority response and providing guidance in implementation of concrete countermeasures.

Risk management structure



Comprehensive disaster prevention drill



Accreditation of Good Fire Prevention Construction

Insuring Occupational Health and Safety

MITSUMI sets its sights on completely eliminating industrial accidents at operational centers in Japan. With this in mind we have reassessed operational procedure manuals and improved working environments and taken many other steps to insure occupational health and safety of all employees.

Activities by Individual Business Divisions

Chitose Business Division

- Implementing patrolling (twice a year)
- Traffic safety campaigns (five times a year)
- Sponsoring gas management lectures
- Implementing risk assessment
- Introducing AED (Automated External Defibrillator)
- Introduction of disaster relief vendor

Akita Business Division

- Installing windows on swinging doors (to prevent collisions)

Yamagata Business Division

- Implementing counseling (once a month)

Head Office

- Implementing patrolling (twice a year)
- Introducing AED (Automated External Defibrillator)
- Implementing special health checkups
- Implementing traffic safety lectures
- Implementing disaster prevention drill

Atsugi Operation Base

- Implementing patrolling (twice a year)
- Implementing special health checkups (twice a year)
- Implementing working environment measurement (twice a year)
- Introducing AED (Automated External Defibrillator)

Kyushu Business Division

- Measuring working environment and checkups for workers



Installing AED (Automated External Defibrillator)



Emergency lifesaving training

Customers and MITSUMI

Quality Management System

Many properties and functions are expected from electronic parts. This does not simply include the electrical and physical performance listed in the spec sheets. There are important properties that can not be expressed in words and numbers. These include product quality. MITSUMI is engaged in many activities to insure that quality.

The quality of electronic parts has a direct connection with the safety and reliability of the electric and electronic equipment they are found in. By organically joining all stages from development to final production, MITSUMI continues a quest for highest quality. In the design stage we use CAE (computer aided analysis) methods to conduct analyses from every possible angle. We also conduct thoroughgoing investigations to discover what steps are necessary to realize stable quality. This starts with investigations in design improvements and materials. When it comes to quality control in the production stage, the MPS (MITSUMI Production System) Innovation Division are the central focus in comprehensive introduction of production management and production technology at our overseas production bases in order to improve and maintain quality standards. This thoroughgoing quality management means a reduction in percent defective, not to mention shortened development periods and reduced production costs, all of which gain high marks for satisfaction among our customers.

Another important element together with quality control is care for the environment. Strict environmental restrictions such as the RoHS directive and the REACH regulations in the EU have now been enacted around the world regarding harmful chemical substances. MITSUMI has created management systems for these restricted substances to eliminate banned substances completely from all steps ranging from materials procurement and production to processing and shipping. What's more, we have responded to usage restrictions on halogen based materials, with emphasis on Western makers, and have eliminated use of the materials in question. Thanks to this action regarding restricted materials, we now comply with the RoHS directive and respond to the environmental demands of our customers.

Obtaining ISO9001 International Quality Management Standards

MITSUMI has now obtained ISO9001 international quality management standard accreditation at all its operational centers and production sites in Japan and abroad. We have additionally obtained ISO/TS1649 international quality management system accreditation, which involves even higher standards in addition to the individual requirements for the auto industry. We are now maintaining and improving our quality management system so that MITSUMI products produced at any of our production sites will offer you the same high standard of quality.

MITSUMI Exhibitions, MITSUMI Entries in International Exhibitions

Ever since its first staging in 1977 the MITSUMI SHOW, our own private product show, has been held every other year. We also participate in CEATEC JAPAN and other trade fairs in Japan, thus creating plentiful opportunities for us to come into direct contact with our customers. We want visitors to come directly into contact with our products and technologies while paying close attention to the evaluations of customers and their wishes for the future in feeding that information back to the entire company.

In addition to exhibitions welcoming visitors, we also travel to the operations of our customers and clients in actively creating so-called caravan exhibitions where they can see our latest products and technologies on their own production sites. In addition to Japan we also visit the facilities of makers in China to strengthen communication with our customers and listen to customer wishes so that we can get an accurate grasp on changes in market needs and use that information in improving our technologies and development of new products.



Scene of CEATEC JAPAN hall

Suppliers and MITSUMI

Basic Purchasing Directives

In manufacturing high-performance/high-quality electronic parts, an indispensable element is tightly-knit cooperative ties with suppliers of raw materials and parts. In addition to observing laws, MITSUMI makes every effort to carry out fair and just purchase operations in accordance with social norms and ethics. Especially when it comes to legislation on purchases, such as the Antimonopoly Law and the Act Against Delay in Payment of Subcontract Proceeds, we hold Information Meetings in departments responsible for purchases and related departments to insure that laws are observed.

Not stopping with our own operations, we consider it important to carry out our corporate social responsibility in all areas of the supply chain, which includes our suppliers. We are asking that all suppliers observe laws and engage in environmental activities (green procurement) and other forms of CSR (corporate social responsibility).

Getting Involved in Green Procurement

In order to supply electronic parts that give priority to environmental protection, we need to have our suppliers engage in efforts to reduce the environmental burden and thus engage in consolidated product production. MITSUMI has all its suppliers submit information on all the materials and resources they supply and carries out checks to insure that no prohibited substances are being used.

We conduct checks on banned substances at our overseas production bases and also conduct Information Meetings at our suppliers in China, Taiwan, the Philippines and Malaysia, thus making requests for management of all banned substances through the MITSUMI Group.

Chemical Substance Management

There are now various laws and regulations that restrict use of certain chemical substances, such as the RoHS directive in the EU nations. The MITSUMI Group has developed the motto: Do not bring in! Do not use! Do not take out! regarding such chemical substances. In addition, of course, to eliminating such banned substances from our products, we have also singled out substances for control to gain a grasp on usage amounts as we construct our own chemical substance management systems.



Supplier information meeting at Tianjin, China

Shareholders, Investors and MITSUMI

MITSUMI is aware that its shareholders and investors are important stakeholders. In order that these persons can make the best investment judgments, we consider it indispensable to carry out accurate, fair and speedy information disclosure and are making every effort to achieve those goals.

Basic Directives on Information Disclosure

As for methods of information disclosure, in accordance with the Timely Disclosure Rules of the Tokyo Stock Exchange, all information corresponding to those rules is disclosed by means of the timely disclosure system of the TSE.* In addition, this public information is also promptly disclosed on the IR Information Page of our website so that it can be fairly conveyed without delay to all general investors.

The IR Information Page of our website also regularly features so-called "Earnings Release" or timely reports on latest market developments. Information considered useful for general investors is regularly publicized by means of our homepage as well as in magazines and newspapers. By engaging in consolidated IR activities, we want to achieve optimum communication with shareholders and general investors.

*TSE: Tokyo Stock Exchange



Business report

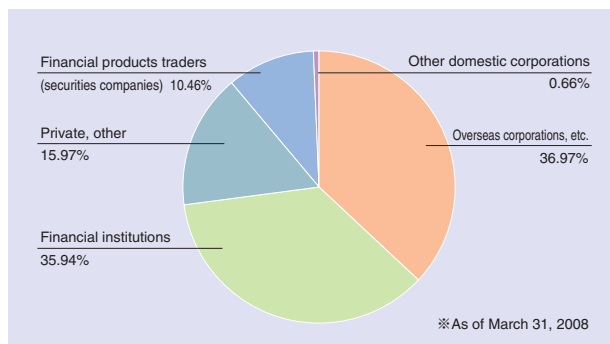
Dividend Policy

In returning profits to our shareholders, after making a comprehensive survey of the situation, such as corporate results, the condition of finances, and the store of internal reserves for future corporate investments, we carry out policies so as to meet shareholders' expectations. In the March 2008 business period we exceeded the former period in the three areas of proceeds, current earnings and current net income, creating the second consecutive all-time record. As for dividends, there was a dividend increase of 17 yen and a per-share figure of 50 yen.

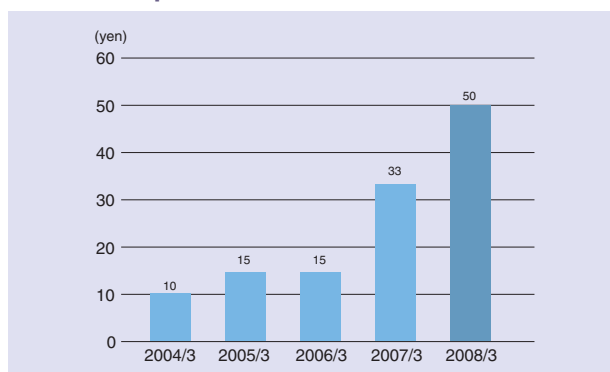
From now on our basic policy will be one of distribution of rewards according to results as based on business results. Our goal is a dividend payout ratio of 25% or higher as based on consolidated business results as we endeavor to develop operations where we can achieve ongoing distribution of stable dividends.

Also, with our goal of an ROE equal to 10% or higher, we will endeavor to increase our corporate worth, in thus meeting the expectations of shareholders and investors.

Composition of shareholders



Dividend per share



Local Communities and MITSUMI

The entire MITSUMI Group has proclaimed harmony and cooperation with the local community as its motto in participating in local activities and activities that contribute to society. These have taken many forms.

River Beautification Campaign, Community Cleanup Campaign

A campaign to beautify the riverbed of the Sagami River, one of the major rivers of the Kanto region and located near our Atsugi Operation Base, featured participation by employees and their families. In addition we carry out regularly scheduled cleaning campaigns in the areas surrounding our operational centers in Japan. Our goal is to spread awareness of the importance of environmental protection in the entire MITSUMI Group.



Sagami river bed beautification campaign

Beautification campaign in the area near our Head Office

Charitable Contributions

Following the Niigatoken Chuetsu-oki Earthquake Disaster in July 2007, MITSUMI donated a total of 10 million yen in relief money to earthquake victims via the Niigata Prefecture Disaster Countermeasures Office. MITSUMI received the Medal with Dark Blue Ribbon from the Japanese Government.

In addition, in response to the earthquake damage in Sichuan province in China's western region that occurred in May 2008, our Home Office joined forces with our four production plants in China to send relief money to victims via the Japan Red Cross and the China Red Cross.



Letter of thanks from Niigata Prefecture



Medal with Dark Blue Ribbon from Japanese Government



Letter of thanks from Japanese Red Cross Society

Participation in Local Festivals

Iizuka City in Fukuoka Prefecture, the site of our Kyushu Business Division, is the scene of the so-called Iizuka Yamakasa, a local festival held every year in July that reportedly has its origins in the Edo Period (Reign of Kyoho). Employees from our Kyushu Business Division also participate in that event every year.

At our Chitose Business Division, the employees participate in the local Chitose Municipal Summer Dancing Festival in summer, dancing in the streets in the wake of the festive floats. These are just two examples of how MITSUMI employees encourage regular exchanges with the local population and thus contribute to an activation of the local community.



Iizuka Yamakasa in Iizuka City, Fukuoka prefecture



Chitose Municipal Summer Dancing Festival

Employees and MITSUMI

MITSUMI considers it crucial for the sustainable development of our enterprise that all employees can bring their special abilities and strengths to bear in operations and carry out fulfilling work. With that in mind, we honor the individual personalities of our employees and use proper treatment and benefits as the basis for creating a working environment with a feeling of fulfillment and intellectual stimulation.

Honoring Human Rights

In order that all employees can work in a vibrant environment, bringing their respective skills and knowledge to bear to the greatest degree, we must create working sites and personnel systems free of discrimination so that employees and enterprise will be united by strong ties of trust and mutual respect. MITSUMI honors the character and unique personality of each of its employees, creating working environments and personnel systems that do not allow any discrimination in terms of gender, nationality, creed or religion.

In our overseas production bases and local business centers as well, we are making every effort to eliminate discrimination at working sites and in personnel systems based on our philosophy of honoring human rights.

Personnel Systems at Overseas Bases

MITSUMI acted very early in the electronic parts industry to achieve overseas production. We have thus been engaged for many years now in hiring or recruiting local human resources. In addition of course to our production divisions, when it comes to the engineers and management staff active in our development sections, we are actively engaged in hiring local talent. We want to nurture the abilities and “can-do” spirit of our local employees so as to promote vital and active working environments.

Employee Education System

We believe that training superior human resources is the driving force for corporate growth. MITSUMI has created education and training systems to nurture the individual talents and strengths of all employees as we provide strong support to learning of new knowledge and skills. Starting with basic training for new company freshman, we have training and education systems for stepwise development of careers and abilities. We are raising up the sophisticated management strengths required to act as leaders in our working sites.



Employee education

Environmental Report

Environmental Environmental Report

**Contributing to sustainable development of society
through harmonization with nature and the environment**

Environmental Report, Contents

Environmental Policy	20
Environmental Management Systems	21
Status of ISO14001 Certificate/ Environmental Audit	22
Obtaining ISO/IEC17025 Laboratory Accreditation	23
Environmental Education/Mid-term Targets and Achievement	24
Environmental Accounting	25
Outline of the Environmental Loads in Fiscal 2007	26
Product Development Activities that Consider the Environment	27
Chemical Substances Management	28
Reduction of Environmental Loads	30
Environmental Communication	33
Environmental Protection Activities at Overseas Factories	34
Site Data	36

Environmental Report

MITSUMI Electric Group Corp

Environmental Policy

Basic Philosophy of Environmental Activities

MITSUMI Electric places the issue of the earth's environment (harmony with nature and the environment) as one of the most important management issues it faces. In all aspects of our business activities, we act cooperatively to protect the earth's environment and with an awareness of global movements.

Fundamental Policy

As a comprehensive electronic parts manufacturer, MITSUMI ELECTRIC CO., LTD. has a fundamental policy of harmonizing its environmental protection activities with its business activities, accurately monitoring the environmental impact of various operations, products and services in Japan and abroad.

We establish corporate objectives and goals to keep the environmental impact to an absolute minimum technically and economically, continuously improving our environmental management systems while promoting pollution-prevention programs. We also promote our basic ideal of a company that can be trusted and respected by the local community.

- (1) Using an environmental management organization under the direct control of the CEO to create an environmental management system and promote global environmental protection activities.
- (2) We endeavor to comply with environment-related laws and regulations, regional agreements, customer's product environmental quality demands and other necessary requirements, and to establish a self-management standard as needed to reduce the environmental load and conservation of the environment.
- (3) We endeavor to develop products that are environmentally conscious, resource, energy, and recycle efficient, while avoiding use of hazardous materials from the design, research, and development stages.
- (4) We endeavor to avoid use of ozone depleting substance and hazardous materials that put a load on the environment as much as possible by using alternate technologies and materials.
- (5) We make efforts in resource, and, energy saving, recycling, reduction of waste materials and contaminants, and greenhouse effect gas to conserve the environment in every field of our corporate activities.
- (6) We endeavor to maintain and improve our environmental management system by implementing an internal environmental audit on a regular basis.
- (7) We strive to make this environmental policy known to all employees, members, and all related personnel and along with raising awareness of the environment and the quality of conservation activities through education.

Established: August 2, 2004

Revised: March 10, 2008

MITSUMI ELECTRIC CO., LTD

Shigeru Moribe, President and CEO

Environmental Management Systems

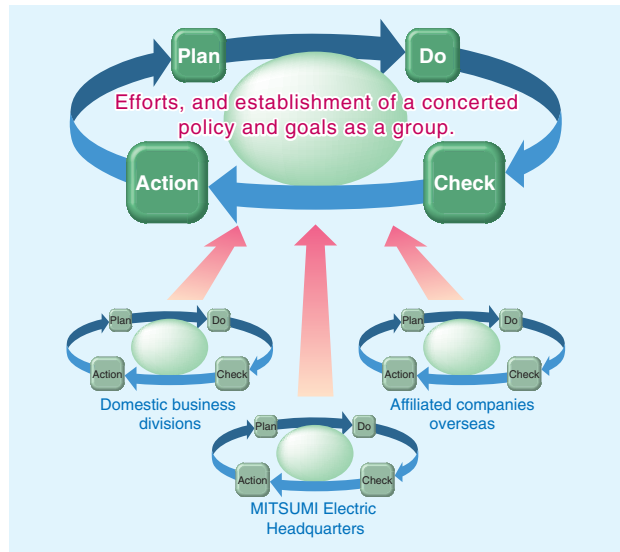
The entire MITSUMI Electric Group strives to achieve harmony with nature and environment as the basic environmental philosophy of the company.

Company-wide Environmental Management System

MITSUMI Electric Group conducts most of its production activities abroad. In carrying out activities to promote environmental protection, our business divisions in Japan and abroad as well as affiliated companies overseas are indispensable in creating an environmental management system and making ongoing improvements.

The PDCA (Plan-Do-Check-Action) Cycle in the entire MITSUMI Group, with MITSUMI Electric as the central focus, realizes comprehensive knowledge of the unified activity plans of the MITSUMI Group and the nature of those activities. At business divisions in Japan and abroad as well as related overseas companies, ISO14001 management systems are the basis for promoting environmental protection activities in keeping with the respective field of activity while keeping the PDCA Cycle in motion.

Management image



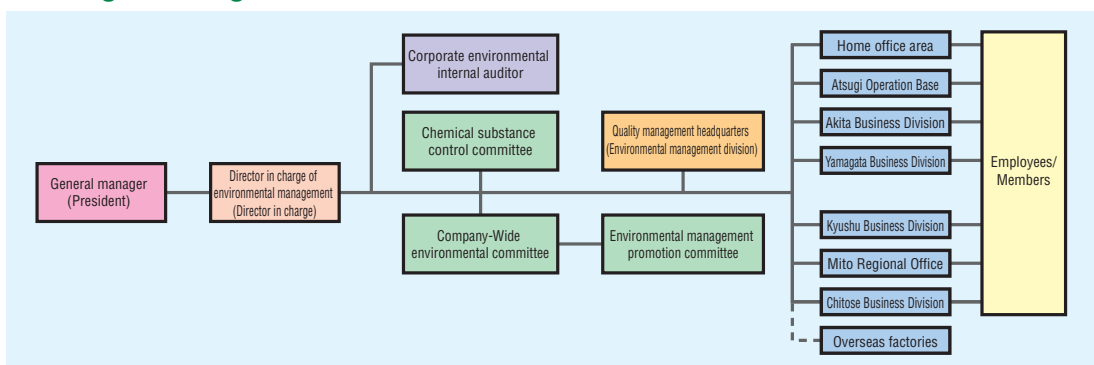
Management Organization

MITSUMI Electric determines group objectives and directives in the MITSUMI Environmental Committee with attendance by the CEO. Environmental management officers then relate findings to individual business divisions. Upon receiving that input, those business divisions implement the directives in their respective systems.

A Chemical Substance Management Committee, composed of representatives of the business divisions and the related organizations at the company headquarters, iron out objectives and action regarding the chemical substances contained in products of the MITSUMI Group, after which information on those substances (client demand, domestic and overseas legislation, etc.) is pooled and investigations of problem areas take place. At the same time, the overseas plants connected with those business divisions come up with decisions and supply reports.

The Environmental Management Promotion Committee is composed of environmental management personnel and offices at the individual action sites to investigate the activities at MITSUMI Electric regarding the environment and to locate problems. Other tasks are creating drafts of Fiscal Year Environmental Objectives and Goals common to all business divisions in Japan and issuing reports to the MITSUMI Environmental Committee.

Management organization



Environmental Management Systems

Status of ISO14001 Certificate

The MITSUMI Group has obtained ISO14001 at seven domestic business divisions and 13 overseas divisions with production facilities. The seven domestic divisions obtained combined accreditation in January 2006.

In fiscal 2007, QINGDAO MITSUMI ELECTRIC CO., LTD. changed the inspection registration organization from CCI to SEATONE. There have been no changes at the other overseas companies.

ISO 14001 certificate status

Name of site	Date of certification	Inspection and registration authority
MITSUMI ELECTRIC CO., LTD. / Head Office	1997/12	JAPAN ELECTRICAL SAFETY & ENVIRONMENT TECHNOLOGY LABORATORIES (JET)
Atsugi Operation Base	1997/10	
Akita Business Division	1997/11	
Yamagata Business Division	1997/11	
Mito Regional Office	1997/ 1	
Kyushu Business Division	1998/ 1	
Chitose Business Division	1998/ 1	
TAIPEI MITSUMI CO., LTD.	1997/12	SGS
TAIPEI MITSUMI CO., LTD. CHA YI FACTORY	1997/11	RW TÜV
TAIWAN MITSUMI CO., LTD.	1997/11	SGS
MITSUMI PHILIPPINES, INC.	1998/ 2	SGS
CEBU MITSUMI, INC.	1998/ 4	SGS
MITSUMI TECHNOLOGY (M.) SDN. BHD.	1999/ 3	TÜV Rheinland
MITSUMI TECHNOLOGY (M.) SDN. BHD. SEGAMAT FACTORY	1999/ 3	TÜV Rheinland
MITSUMI UK LTD.	1998/ 5	SGS
ZHUHAI MITSUMI ELECTRIC CO., LTD.	1998/ 2	TÜV Rheinland
QINGDAO MITSUMI ELECTRIC CO., LTD.	1998/ 5	SEATONE
TIANJIN MITSUMI ELECTRIC CO., LTD.	1998/ 8	CCCI
WUJIANG MITSUMI ELECTRIC CO., LTD.	2005/ 5	TÜV Rheinland
MITSUMI (THAILAND) CO., LTD.	2002/ 8	TÜV Rheinland

Environmental Audit

In accordance with the systems in ISO14001/2004 the business divisions and related overseas companies carry out regular internal audits of divisions. In Japan, because of joint accreditation, internal auditors registered as MITSUMI environmental auditors participate at internal audits at other business divisions, conducting exchanges of audit contents and information to improve the overall level of environmental protection.

As for chemical substance management, persons registered as MITSUMI environmental quality internal auditors conduct internal environmental quality audits at regular intervals at domestic business divisions and overseas related companies and at suppliers to check chemical substance management systems and discover problem areas so as to make corrections.



Scene of external audit

Obtaining ISO/IEC17025 Laboratory Accreditation

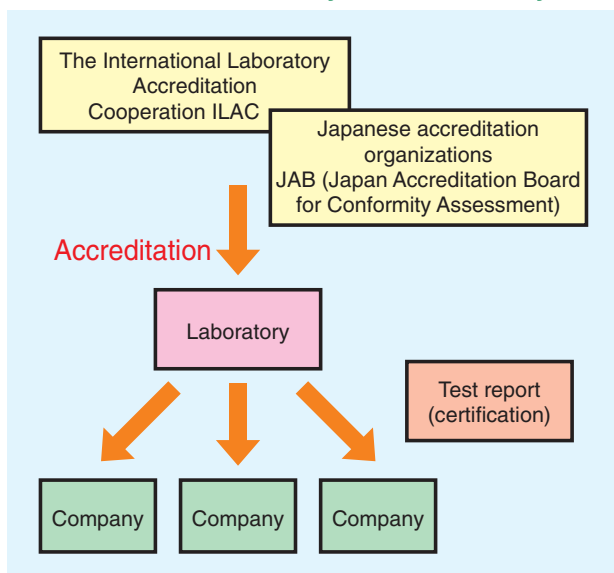
In March 2008 MITSUMI Electric obtained ISO/IEC17025 (JIS Q17025 2005) laboratory accreditation for the Analysis Department of the Atsugi Operation Base in the Optical Testing Field (ICP Emission Spectral Analysis Method). ISO/IEC17025 are international standards for international laboratories and calibration organizations.

Due to the restrictions on harmful chemical substances found in the RoHS Directive, analytical data has become a trading condition in international trade and with customers so that needs have increased for ISO/IEC17025 accredited testing sites in which internationally recognized testing methods are used. Also, having experienced how transaction can be terminated if trouble occurs due to restricted substances, client interest in the reliability of measurement data has increased, which is another factor behind obtaining accreditation.

The present accreditation range is limited to the special field of ICP analysis. The accrediting departments' quality assurance systems and the technical ability of the laboratories have been recognized internationally.

Moreover, as based on the ilac-MRA mutual accreditation system, test reports on the released accreditation range (data) will act as a certificate common for the entire world.

ISO/IEC17025 laboratory accreditation system



Laboratory certificate



Qualification review

Environmental Management Systems

Environmental Education

Beginning with the environmental education that is carried out for all new employees every year in April, we conduct various forms of environmental education based on ISO14001 and chemical substance management at our domestic business divisions as well as related companies overseas.

In fiscal 2007, MITSUMI Electric created an Environmental Handbook that is shared throughout the MITSUMI Group which was created with environmental legislation in Japan as the central focus. An Environmental Handbook first created in 2005 was also revised and distributed to all of our operational units in Japan to implement environmental education with our employees as the target of training.

In addition, discussions continued on such topics as ongoing improvement of EMS (Environmental Management System) and substantial results for environmental management activities with our staff as the target of training in moves to reduce volumes of paper, waste and electric energy use. Moreover, EMS Step-up Training to improve the effectiveness of EMS deployments was instituted for our staff by inviting lecturers from external educational institutions.



The environmental handbook that is shared among entire MITSUMI Group



EMS upgrading training

Mid-term Targets and Achievement

The MITSUMI Electric midterm goals (MITSUMI Voluntary Plan) were created with business divisions in Japan as the target. As of now, plans call for forwarding a 2nd Voluntary Plan by fiscal 2012, using the results for fiscal 2005 as the standard.

In fiscal 2006 total waste matter disposal volumes greatly exceeded the amount for the standard year, so it was not possible to reach our goal. Starting in fiscal 2007, waste amounts decreased, and it was possible this time to reach our goals. As for other promotional goals, we were able to reach our goals in both fiscal 2006 and fiscal 2007.

Results of 2nd. voluntary plan (to fiscal 2007)

Items to be promoted	Targets	Fiscal 2006		Fiscal 2007	
		Result	Evaluation	Result	Evaluation
Prevention of global warming	Reduce CO ₂ emissions by 5% by 2012 (sales CO ₂ unit* compared to fiscal 2005)	13.3%	😊	19.5%	😊
Waste reduction	Reduce total waste emission by 5% by 2012 (compared to 2005. Per sales)	-11.1%	😞	10.0%	😊
Resource saving	Reduce water consumption by 5% by 2012 (compared to 2005. Per sales)	16.7%	😊	20.9%	😊

*:Sales CO₂ unit (t-CO₂/1 hundred million yen) = {(each energy consumption × CO₂ conversion coefficient) total} / sales amount

Environmental Accounting

Scope of compilation : Domestic business divisions (7 bases)

Compilation period : April 2007 - March 2008

Reference guidelines : Environmental Accounting Guidelines 2005

Tally results : Starting in fiscal 2006 we started full-fledged introduction of environmental accounting at our domestic divisions (total of 7 operational units) in an attempt to get a grasp on the economic effect from environmental protection costs and environmental protection measures. The environmental protection costs in fiscal 2007 were as follows: total investment of 130 million yen, total costs of 1.164 billion yen. Compared to the formal fiscal year, environmental protection investments had decreased while the cost amount stayed about the same. Of the investment amount, about 90% was facilities investment related to global warming prevention and reduced energy use. The economic effect for fiscal 2007 greatly exceeded that for the former fiscal year. This is believed to be the result of an increase in the amount of sales of valuable resources, the steep rise in materials prices and the rising costs of reducing management costs concerning energy saving programs.

The economic effect of environmental protection measures were computed as economic effect only for the items in which the results of action are clear.

Environmental protection cost

Unit: 1 million yen

Classification	Investment		Expenses		Major activities
	2006	2007	2006	2007	
Cost in business area	136	122	648	644	Prevention of pollution, preservation of global environment, recycling of resource
Upstream/downstream cost	66	0	292	279	Reduction of chemical substances
Management activity cost	0	8	221	241	Environmental education, operation of environmental management system, disclosure of environmental information
Research and development cost	0	0	0	0	
Social activity cost	0	0	0	0	
Cost of measures against environmental damage	0	0	0	0	
Other costs	0	0	0	0	
Total	202	130	1,161	1,164	

Economic effect of environmental protection measures

Unit: 1 million yen

Classification	2006	2007	Major activities
Profit	20	48	Sell-off of valuable resources
Cost reduction	12	37	Energy saving, resource saving
Total	32	85	

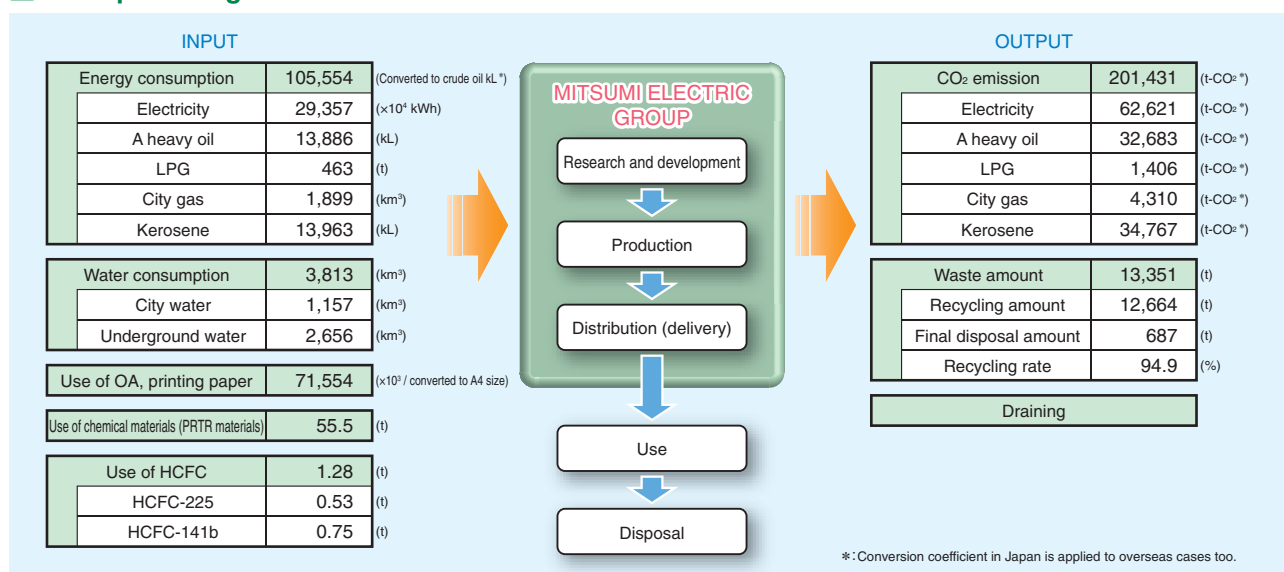
Outline of the Environmental Burdens in Fiscal 2007

In the MITSUMI Electric Group there is the direct environmental burden resulting from industrial activities (product development and production, supply) and then an indirect burden on the environment due to the generation of waste water and waste substances in industrial and production activities.

Especially in the production stage, use of materials and other resources, use of energy such as electric power and fuel, and use of various chemicals is involved.

The MITSUMI Electric Group makes every effort to get an accurate grasp on these direct and indirect environmental burdens in order to reduce that burden.

Conceptual diagram of the environmental burden



Situation for Use and Discharge of PRTR Target Substances

PRTR stands for “Pollutant Release and Transfer Register.” This is the result of efforts to obtain data on the following: What is the origin of the various chemical substances with harmful properties? What quantities of these substances are discharged into the environment? To what extent are they contained in waste materials and discharged outside business divisions? This data is then tallied and made public in this system. In Japan, the PRTR Promotion Law is the basis for legislation in which industrial divisions producing or using the 354 substances of the Class 1 Designated Chemical Substances that are the target of PRTR must gain an accurate grasp themselves of the amounts disposed in the environment and the amounts that are transported outside their facilities for processing as waste materials. They must submit such a report once a year.

The business divisions at MITSUMI Electric that are the target of such legislation include two centers: The Atsugi and Chitose Business Divisions. The chemical substances that are the target of restriction include five types with a total amount of about 55.5 tons. Although there are ups and downs in the usage volumes, these are reported to the national government regularly every year.

Discharge situation at Atsugi and Chitose Business Divisions

Unit: t/year

Business division name	Chemical substance name	Usage amount	Discharge amount					Transfer amount			Amount of consumption	Amount of removal processing
			Atmosphere	Public water	Soil	Landfill on the premises	Total	Waste materials	Sewerage	Total		
Atsugi Operation Base	2-aminoethanol	19.00	0.50	0.00	0.00	0.00	0.50	8.99	0.00	8.99	0.00	9.51
	Hydrogen fluoride and its water-soluble compounds	9.84	0.12	1.27	0.00	0.00	1.39	8.45	0.00	8.45	0.00	0.00
Chitose Business Division	Xylene	4.38	0.18	0.00	0.00	0.00	0.18	4.20	0.00	4.20	0.00	0.00
	Hydrazine	3.36	0.00	0.00	0.00	0.00	0.00	1.26	0.00	1.26	2.10	0.00
	Phenol	2.22	0.09	0.00	0.00	0.00	0.09	2.13	0.00	2.13	0.00	0.00
	Hydrogen fluoride and its water-soluble compounds	16.68	0.17	0.83	0.00	0.00	1.00	0.00	0.00	0.00	15.68	0.00

Product Development Activities that Consider the Environment

MITSUMI Electric Group strives to develop environmentally conscious products while satisfying customer's demands.

Environmental Concerns in Development of Products

In considering an environmental approach regarding product lifecycles, we must not start with the finished products but already make considerations and investigations about the environment from the design and development stage. At MITSUMI Electric, we prepare and use product assessment evaluation tables to assess the life cycles of products and thus make efforts to reduce our environmental burden as an enterprise.

The product assessment evaluation tables check on such items as efforts to reduce the weight of products, increase product life and recycle resources, degradability, safety, packaging configuration, efforts to reduce energy use, optimization of production processes, etc. Set standards are used for evaluation. This is used to clarify if there are factors having a major effect on the environmental in any part of the product and to search for directions in making improvements.

Product assessment evaluation table

Category	Evaluation item
1. Reduction of volume	(1) Miniaturization and reduction of volume of products
	(2) Miniaturization and reduction of volume of parts
	(3) Resource saving
	(4) Standardization
2. Prolonged life of product	(1) Durability
	(2) Expandability
3. Recycling	(1) Ability of recycling
	(2) Standardization of materials
	(3) Utilization of recycled materials
	(4) Promotion of recycling
4. Degradability	(1) Degradability
	(2) Separation of part materials
	(3) Separability of materials
	(4) Labeling of material names
5. Safety of the product	(1) Hazardousness and noxiousness
	(2) Hazardousness and noxiousness in disposal
	(3) Explosion and implosion
	(4) Risks
6. Product packaging	(1) Reduction and miniaturization of packaging
	(2) Downsizing of entire package
	(3) Promotion of re-use
	(4) Utilization of recycled resources
	(5) Hazardousness and noxiousness
	(6) Unification of materials
	(7) Labeling of material names
7. Energy conservation	(1) Promotion of efficiency
	(2) Resource conservation
8. Disclosure of information	(1) Documents to provide process information
	(2) Provision of information on disposal
	(3) Provision of information on chemicals
9. Production process	(1) Hazardousness and noxiousness
	(2) Waste material (per product)
	(3) Facility (per product)
	(4) Yield
10. Others	(1) Distribution pattern
	(2) Promotion of efficiency
	(3) Compliance
	(4) Customer demand

Chemical Substances Management

MITSUMI Electric Group has established a chemical material management system to strictly control the use of chemical substances with the motto “Do not bring in, do not use and do not take out”.

Chemical Substance Management System

The RoHS (Restriction of Hazardous Substances) directive enacted in July 2006 was the opportunity to create legislation in different nations and regions regarding usage restrictions on harmful chemical substances, a process that continues today.

Given the tight situation, the MITSUMI Electric Group has developed the motto: Do not bring in! Do not use! Do not take out! In addition of course to not using prohibited chemical substances in its products, MITSUMI has also determined substances for control in order to gain a grasp on usage volumes in thus creating its own chemical substance management system.

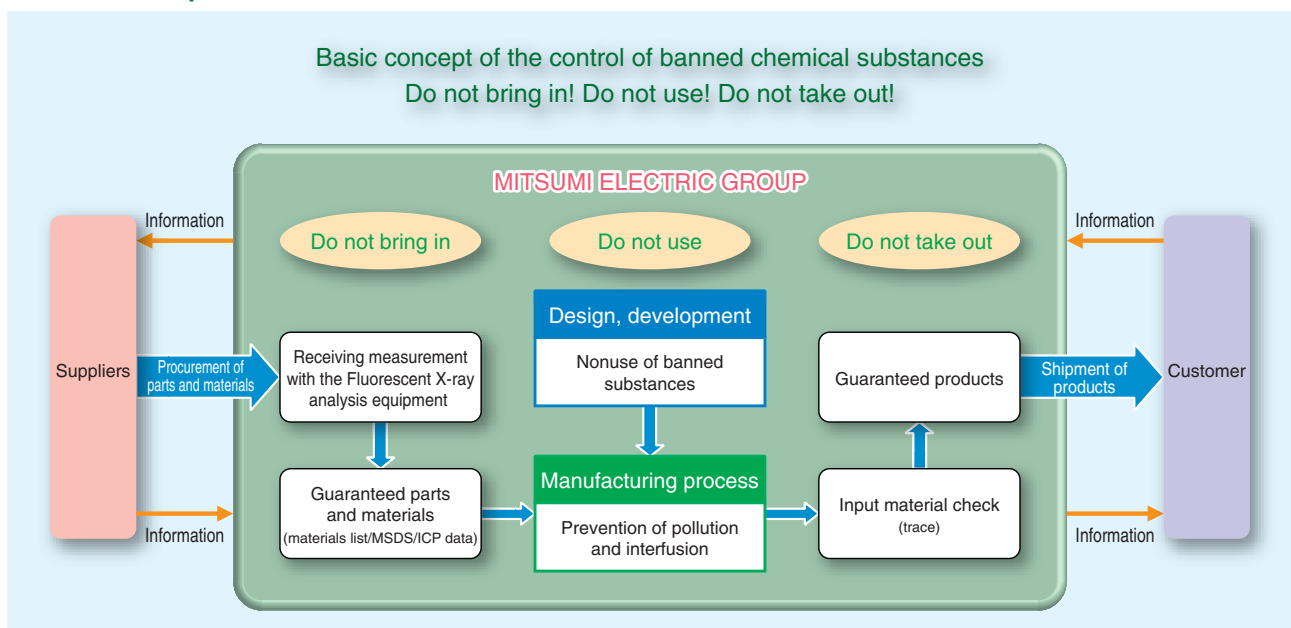
In fiscal 2007, MITSUMI Electric held a supplier information meeting for suppliers of our domestic business divisions and overseas related companies. These parties were asked to take thoroughgoing action to manage all chemical substances in the MITSUMI Group whose use is prohibited.

Moreover, in joint operations with our Materials & Procurement Division, we created a Management Database System for companies having business dealings with our domestic business divisions and with related overseas companies in efforts to achieve superior management of suppliers.



Supplier information meeting at MITSUMI Electric Head Office

Basic concept of the control of banned chemical substances



Installation of Chemical Substance Analysis Equipment

In order to steadily implement our motto of “Do not bring in! Do not use! Do not take out!,” which is our key concept in dealing with chemical substances whose use is prohibited, the MITSUMI Electric Group has already introduced X-ray fluorescence spectrometers (EDXRF) at 18 operations domestic and overseas. This equipment is used to carry out inspections on receipt of parts, etc., and, when necessary, to conduct analysis and measurement of harmful chemical substances in the production process.

Nevertheless, when it comes to special brominated flame retardants (polybrominated biphenyl, polybrominated diphenyl ethers) whose use is restricted by the RoHS directive, as well as phthalate esters whose use is partly restricted, because these cannot be analyzed with the EDXRF, the so-called gas chromatograph mass spectrometer (GC/MS) has been introduced at three domestic divisions and nine overseas factories for analysis of these chemical substances. The introduction of systems for speedy and accurate testing has led to more thoroughgoing management of harmful chemical substances.



X-ray fluorescence spectrometer

EDXRF and GC/MS installation sites

Name	EDXRF	GC/MS
MITSUMI ELECTRIC CO., LTD. / Head Office	○	
Atugi Operation Base	○	○
Akita Business Division	○	
Yamagata Business Division	○	○
Mito Regional Office	○	
Kyushu Business Division	○	○
TAIPEI MITSUMI CO., LTD.	○	○
TAIPEI MITSUMI CO., LTD. CHA YI FACTORY	○	○
TAIWAN MITSUMI CO., LTD.	○	
MITSUMI PHILIPPINES, INC.	○	○
CEBU MITSUMI, INC.	○	○
MITSUMI TECHNOLOGY (M.) SDN. BHD.	○	○
MITSUMI TECHNOLOGY (M.) SDN. BHD. SEGAMAT FACTORY	○	
ZHUHAI MITSUMI ELECTRIC CO., LTD.	○	○
QINGDAO MITSUMI ELECTRIC CO., LTD.	○	○
TIANJIN MITSUMI ELECTRIC CO., LTD.	○	○
WUJIANG MITSUMI ELECTRONICS CO., LTD.	○	○
MITSUMI (THAILAND) CO., LTD.	○	



Gas chromatograph mass spectrometer

Response to Chemical Substance Regulations

The RoHS directive was enacted in July 2006 by the EU to limit use of special harmful chemical substances contained in electronic devices. The REACH (Registration, Evaluation, Authorization of Chemicals) regulation was enacted in June 2007. Other restrictions and regulations have since been enacted on harmful chemical substances in different countries of the world.

As for the ELV (End of Life Vehicle) directive enacted in July 2003 and items exempted from the RoHS directive, deliberation to carry out reassessments began in 2007.

More recent times have witnessed spreading movements on the Europe and America manufacturer for usage restrictions on halogen materials (especially chlorine and bromine) as well as antimonous oxide and red phosphorus. Also attracting attention are movements regarding perfluorooctane sulfonate (PFOS) whose abolition is discussed in the Stockholm Convention (POPs, Persistent Organic Pollutants Convention).

MITSUMI Electric, in taking appropriate action regarding these restricted substances, has teamed up with suppliers to carry out action to promote usage restriction.

Reduction of Environmental Loads

MITSUMI Electric Group makes efforts in every aspect of its company activities to minimize the load on the environment, including energy conservation, recycling of resources, reduction of waste.

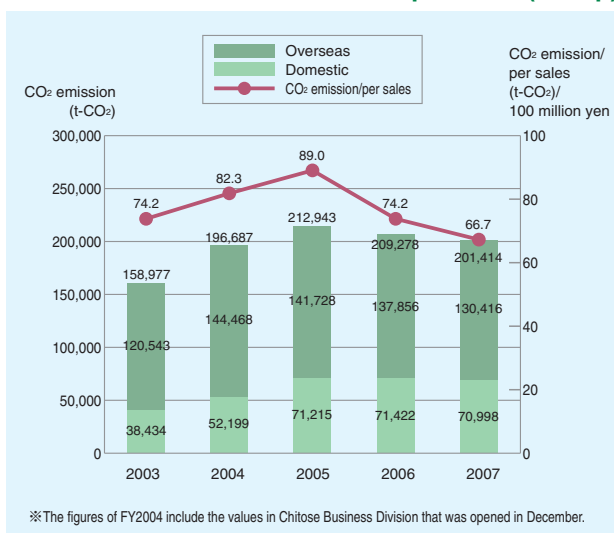
Measures Against Global Warming

Recent years have seen the effect of global warming, not only in Japan but in other parts of the world. It is a crucial mission for all of humanity to bring about the greatest possible reduction in emission volumes of CO₂, one of the substances causing such global warming.

In fiscal 2007, MITSUMI Electric reduced the volume of CO₂ discharge 500 tons in Japan in comparison to fiscal 2006, with a reduction of 7,400 tons abroad or a total of 7,900 tons for the entire MITSUMI Group. In terms of the transition of CO₂ emission and per sales, due to an increase in sales and a decrease in CO₂ discharge volumes, it was possible to achieve a 7.5 point reduction.

As for CFC substitutes, these were completely eliminated from our domestic divisions in 2006. Although there are still some overseas divisions using them, the usage volume was about 1.3 tons in fiscal 2007 (compared to about 3 tons in fiscal 2006). The entire MITSUMI Group is promoting activities toward a further reduction of these substances.

Transition of CO₂ emission and per sales (Group)



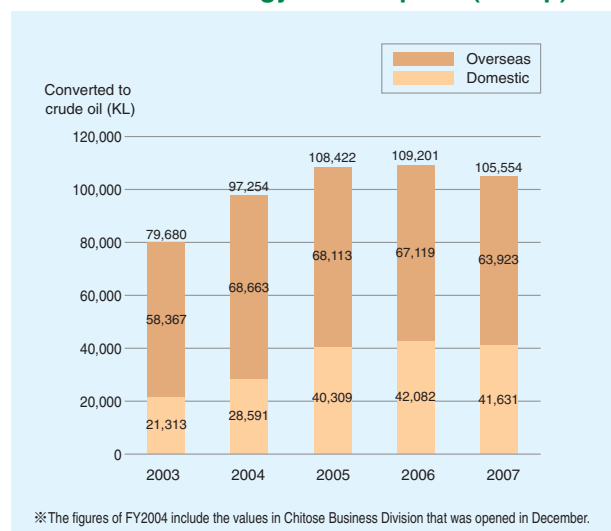
Activities to Energy Saving

MITSUMI Electric's energy use in fiscal 2007 saw reductions of 1.1% for domestic divisions and 4.8% for overseas divisions (group total: 3.3%) compared to the former year. This is the result of promoting more effective and efficient energy use in both our domestic and overseas divisions.

October 2007 witnessed a switchover from LPG to city gas at our Atsugi Operation Base. We could thus realize a reduction of about 31 kL in terms of crude oil equivalent compared to use of LPG.

MITSUMI Electric is actively involved in a sequential reduction in energy use, starting with areas where implementation is possible, regardless of the relative size of the effect.

Transition of energy consumption (Group)



Steps to Reduce Use of Natural Resources

Water usage volume reduction plans (clean water and groundwater) call for a 5% reduction in water use by fiscal 2012 with fiscal 2005 as the base year, and action is continuing apace.

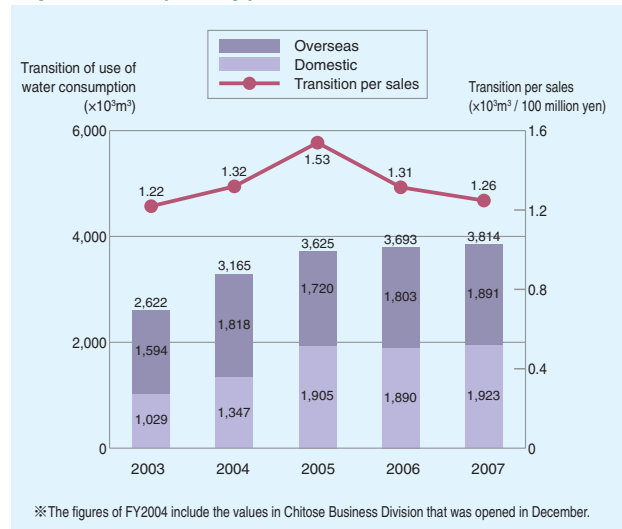
In fiscal 2007, due to an increase in production volumes domestically and abroad, there was a slight increase in water usage volumes compared to the former fiscal year. As for figures in terms of sales units, although the water usage volume increases, due to the influence of an increase in sales, the figure still decreased compared to the former fiscal year when considered in this way.

Regarding Styrofoam as a packaging material, in order to reduce amounts at suppliers that can become waste materials, we conducted evaluation tests on shock absorption properties, etc. and switched over to paper cardboard packing, beginning with products for which this was no problem. As a result, due to a reduction in production activities for products domestically, we were able to completely abolish use of that material in 2005. In overseas plants as well, usage volumes are tending to decrease. Especially in fiscal 2007 we achieved a 24% reduction compared to the former fiscal year and we will be continuing action to further reduce usage volumes.

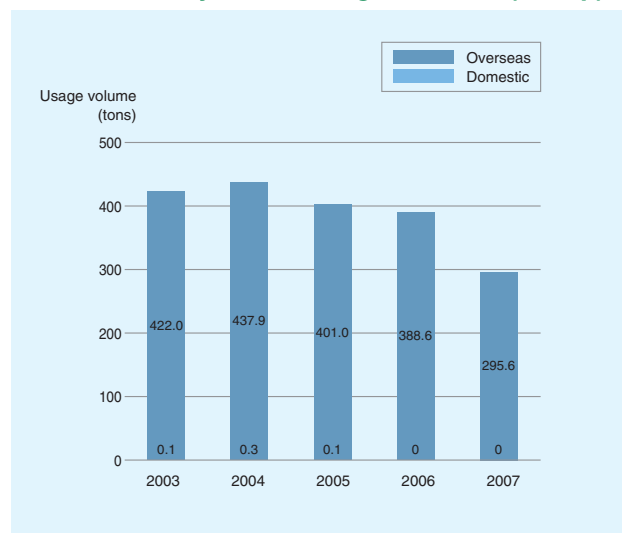
When it came to printing paper for office equipment, we achieved a minor reduction in Japan in usage volumes.

Overseas, however, due to a production increase, there has been increased use every year of such paper. We will now make every effort to further reduce usage volumes both in Japan and abroad.

Transition of use of water consumption and per sales (Group)



Trends for styrofoam usage volumes (Group)



Reduction of Environmental Loads

Activities for Waste Reduction (Domestic)

After achieving Zero Emissions* in fiscal 2005, we have since then been promoting maintenance of those levels. Our recycling rate was 99.7% for the years 2006 - 2007.

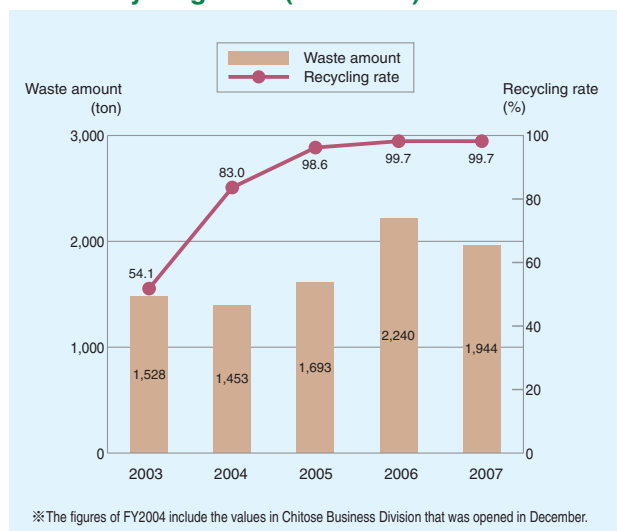
In fiscal 2007, MITSUMI Electric established goals and objectives of the reduction in total waste material volumes for the entire company and action taken at all business divisions leading to a reduction.

As for the domestic group, we have established a midrange objective up to 2012 of reducing the total discharge of waste materials by 5% compared to fiscal 2005 in terms of sales units and are now promoting those plans. In fiscal 2007, results went below those for the former year, and due to an increase in sales, we were able to achieve our goals.

In order to reduce waste materials, in addition of course to not discarding such materials, we have to make sure that all employees participate in reducing generation of those materials and we need to find out ways to realize those goals.

*:Definition of zero emission:To keep 99% or higher rate of recycling of industrial waste for three consecutive months.

Trends in waste material generation volumes and recycling rates (Domestic)



Steps at the Atsugi Operation Base to Reduce the Environmental Burden

The Atsugi Operation Base has been promoting action for a long time already with the goal of reducing energy usage volumes. Part of that action included a switch from LPG, a fuel that had been used up to then, to use of city gas as of October 2007.

As a result, in the half year from October 2007 to March 2008 we could achieve a 280 ton reduction in CO₂ discharge volumes compared to the time when LPG was used, which means a percent reduction of 18%.

The Atsugi Operation Base also changed over from use of standard fluorescent lamps to a new energy saving fluorescent lamp and also changed to heating/cooling systems that use a new coolant instead of CFCs. All of these actions were part of steps to promote a reduction in the environmental burden.



Part of city gas facilities at the Atsugi Operation Base

Environmental Communication

In order to report the status of environmental protection activities both internally and externally, MITSUMI Electric Group makes such information public. We, as a member of society, also endeavor to contribute to the local community through activities such as cleaning the area we are in.

Transmission of Information

Information disclosure for outside

In February 2004, MITSUMI Electric released the MITSUMI Environmental Report summarizing environmental protection activities up to now. Since then we have been publishing environmental reports every fiscal year that include a description of activities.

Our website on the Internet is used to release information on environmental principles, environmental directives, latest environmental action, systems to promote environmental protection, situation for obtaining ISO14001 accreditation and environmental reports. We also feature information in three languages (Japanese, English, Chinese) on management of chemical substances posing a burden for the environment. These are all part of plans to increase convenience for suppliers of materials.



Environmental Report 2004-2007



Information for inside

We use the intra-net to transmit the environmental information to share with our employees. Also, the company magazine "Onigiri" takes up the environmental issues as "ECO NEWS" to raise awareness of the issues among employees.



MITSUMI Electric Group intranet



MITSUMI Electric Group company magazine "Onigiri"

MITSUMI Electric web site
<http://www.mitsumi.co.jp/Eco/index.html>

Environmental Protection Activities at Overseas Factories

MITSUMI (THAILAND) CO., LTD. is located in Chonburi Province on Thailand's eastern coastline about 80 kilometers from Bangkok. The region is famed for its natural beauty, tourism and fishing industry. In order to protect this splendid natural environment, all members are participating actively in environmental protection activities.



Location of MITSUMI (THAILAND)

Production Items

This factory is manufacturing remote controllers, stepping motors, keyless controllers and other devices. Plans call for start of production of automotive radio tuners and control panels for car air conditioners in 2009. MITSUMI (THAILAND), like the home office, is actively engaged in environmental protection as well as management and reduction of chemical substances.

Environmental Directives

MITSUMI (THAILAND) obtained ISO14001 accreditation in December 2000, and is now endeavoring to improvement production processes and corporate activities having an influence on the environment. Together with suppliers, they are working to improve safety, health and working environments while reducing electric power consumption and managing chemical substances.

Environmental Action

MITSUMI (THAILAND) is endeavoring to reduce energy use while saving or recycling resources at its facilities. Other activities include classification and effective use of waste materials. They conduct Environmental Information Meetings for suppliers from which they purchase materials and also carry out inspections. They also conduct inspections with X-ray fluorescence spectrometers (EDXRF) of parts shipped to the plant and make every effort to absolutely insure that no prohibited chemical substances are contained in MITSUMI products.



Analysis operations

Environmental Education

MITSUMI (THAILAND) holds regular seminars on environmental protection in addition to training new employees on the environment. Training courses include lectures on the RoHS directive so as to increase employee awareness in a company that is a global player on the world market.



Training operations

Progress of MITSUMI Electric Group Environmental Protection Promotion Activities

Year/Month	Activities
1990/ 1	Establishment of special company-wide fluorocarbon task force.
1993/ 6	Specific CFCs and trichloroethane abolished. Environment Division established.
1993/12	Company-wide environmental committee established.
1994/ 8	Environmental Protection Activities Plan (Voluntary Plan) initiated.
1998/ 1	Acquisition of ISO14001 certification for all domestic operation bases (7).
1999/ 3	Acquisition of ISO14001 certification for main overseas operation bases (13).
1999/ 9	MITSUMI lead-free promotion committee established.
2000/12	Organic chlorine compounds (dichloromethane, trichloroethylene, tetrachloroethylene) abolished completely.
2001/ 2	MITSUMI's environmental activities posted on MITSUMI's Web site.
2002/ 2	Company-wide chemical regulation project established.
2002/ 7	Fluorescent X-ray analysis equipment introduced.
2002/10	Rules for regulating environment-related chemicals initiated.
2003/ 1	Initiation of environmental quality internal audit on major domestic and overseas production bases.
2004/ 2	Publication of MITSUMI Environmental Report 2003. Promotional activities of ISO14001 domestic integration initiated.
2004/ 8	Establishment of company-wide common environmental policy, manual and rules.
2005/ 1	Certification of ISO 14001 domestic integration acquired.
2006/ 1	Chitose Business Division is included in ISO 14001 domestic certification.
2006/ 3	All domestic divisions achieve zero emission.
2006/11	Introduction of the gas chromatograph mass spectrometer initiated.
2006/12	Sponsoring of overseas supplier information meeting regarding chemical substance management.
2007/ 4	Creation of 2nd environmental protection promotion activities (Voluntary Plan).
2007/ 5	Sponsoring of domestic supplier information meeting regarding chemical substance management.
2008/ 3	Obtaining ISO/IEC17025 laboratory accreditation.
2008/ 3	Sponsoring of overseas supplier information meeting regarding chemical substance management.

Site Data

MITSUMI Electric Group is engaged in production activities at business locations all over the world. Since much of the production is conducted overseas, our overseas business divisions share and comprehend the same environmental load data of our domestic business divisions.

The site data only describe the business divisions that have production facilities and own the environmental load data in fiscal 2007.

Corporate name	Energy consumption						Total (Converted to crude oil kL)
	Electricity (X10 ⁴ kWh)	A heavy oil (kL)	LPG (t)	LNG (t)	City gas (km ³)	Kerosene (kL)	
MITSUMI ELECTRIC CO., LTD./Head Office	430	0	0	0	325	0	1,482
Atsugi Operation Base	5,335	0	314	0	630	0	14,853
Akita Business Division	236	0	1	0	0	0	607
Yamagata Business Division	253	1,823	1	0	0	12	2,503
Mito Regional Office	95	0	0	0	0	0	244
Kyushu Business Division	176	3	17	0	0	0	479
Chitose Business Division	7,923	0	0	0	944	7	21,463
Domestic total	14,447	1,826	334	0	1,899	19	41,631

TAIPEI MITSUMI CO., LTD.	210	0	2	0	0	0	542
TAIPEI MITSUMI CO., LTD. CHA YI FACTORY	584	0	0	0	0	0	1,501
TAIWAN MITSUMI CO., LTD.	607	0	0	0	0	0	1,559
MITSUMI PHILIPPINES, INC.	1,377	4,048	0	0	0	0	7,628
CEBU MITSUMI, INC.	2,114	64	2	0	0	13,944	18,747
MITSUMI TECHNOLOGY (M.) SDN. BHD.	979	7,600	0	0	0	0	10,193
MITSUMI TECHNOLOGY (M.) SDN. BHD. SEGAMAT FACTORY	550	0	0	0	0	0	1,414
MITSUMI ELECTRONICS (SINGAPORE) PTE. LTD.	162	0	0	0	0	0	416
ZHUHAI MITSUMI ELECTRIC CO., LTD.	3,699	268	0	0	0	0	9,776
QINGDAO MITSUMI ELECTRIC CO., LTD.	1,957	0	60	6	0	0	5,117
TIANJIN MITSUMI ELECTRIC CO., LTD.	1,970	0	31	0	0	0	5,102
WUJIANG MITSUMI ELECTRONICS CO., LTD.	378	80	34	0	0	0	1,097
MITSUMI (THAILAND) CO., LTD.	323	0	0	0	0	0	830
Overseas total	14,910	12,060	129	6	0	13,944	63,923
MITSUMI Electric Group total	29,357	13,886	463	6	1,899	13,963	105,555

CO ₂ emission (t-CO ₂)	Water consumption		Use of OA, printing paper (x10 ³ /converted to A4 size)	Use of HCFC (t)	Waste amount (t)	Final disposal amount (t)	Recycling rate (%)
	City water (x10 ³ m ³)	Underground water (x10 ³ m ³)					
2,544	24	0	4,183	0	116	0	100.0
24,792	0	771	2,363	0	702	3	99.6
992	9	30	396	0	69	0	99.7
6,033	20	116	817	0	127	0	100.0
399	2	16	141	0	110	0	100.0
803	8	0	1,781	0	81	0	99.9
35,435	14	914	-	0	739	3	99.6
70,999	77	1,846	9,680	0	1,944	6	99.7

888	4	0	346	0	77	23	69.9
2,453	22	0	386	0	2,017	0	100.0
2,549	0	37	395	0	135	0	100.0
16,754	196	0	2,887	0	1,411	64	95.5
43,779	0	763	5,851	1	3,227	475	85.3
24,709	32	0	829	0	39	0	100.0
2,310	30	0	515	0	276	5	98.4
679	8	0	89	0	67	1	98.6
16,260	531	0	2,105	0	2,431	0	100.0
8,419	113	0	45,390	0	578	73	87.4
8,367	107	0	2,286	0	1,040	0	100.0
1,909	39	0	398	0	89	38	57.0
1,357	0	9	399	0	22	2	90.2
130,433	1,081	810	61,876	1	11,407	681	94.0
201,432	1,157	2,656	71,556	1	13,351	687	94.9

MITSUMI's Worldwide Network



TIANJIN MITSUMI ELECTRIC CO., LTD.



QINGDAO MITSUMI ELECTRIC CO., LTD.



WUJIANG MITSUMI ELECTRONICS CO., LTD.



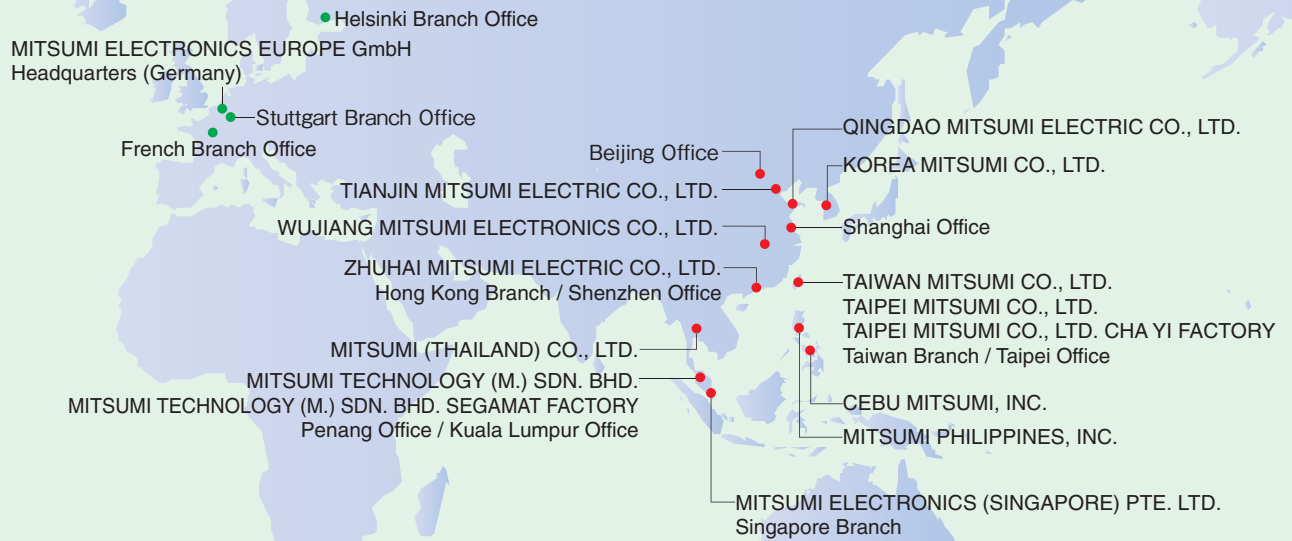
TAIPEI MITSUMI CO., LTD.



ZHUHAI MITSUMI ELECTRIC CO., LTD.



TAIWAN MITSUMI CO., LTD.



MITSUMI (THAILAND) CO., LTD.



MITSUMI TECHNOLOGY (M.) SDN. BHD.



MITSUMI TECHNOLOGY (M.) SDN. BHD. SEGAMAT FACTORY



MITSUMI ELECTRONICS (SINGAPORE) PTE. LTD.



MITSUMI PHILIPPINES, INC.



TAIPEI MITSUMI CO., LTD. CHA YI FACTORY



Chitose Business Division



Yamagata Business Division



Akita Business Division



CEBU MITSUMI, INC.



Kyushu Business Division



Atsugi Operation Base



Head Office



MITSUMI ELECTRIC CO., LTD.

Corporate Headquarters: 2-11-2 Tsurumaki, Tama-shi, Tokyo 206-8567, Japan
TEL: +81-042-310-5333 FAX: +81-042-310-5168

<http://www.mitsumi.co.jp/>



※Printed with soy ink.
※This booklet uses recycled paper.
Printed in Japan 0902B8①